



Wood Lane, London

£1,850 Per Month



1



1



1



C

jo

Wood Lane, London

£1,850 Per Month



Summary Description

Jorgensen Turner proudly present this contemporary apartment located on Wood Lane, W12, newly available to the market. This stylish one-bedroom property stands out with its modern finishes and well-organised layout, perfectly blending style and practicality.

The apartment showcases a high standard of presentation throughout. At the heart of this home is its spacious reception room, designed for both entertaining guests and relaxing nights in. Accompanying this is a functional kitchen and a sleek bathroom, all connected by a hallway with built-in storage, ensuring convenience for residents.

Settled in a vibrant community, this property is a beautiful retreat from the hustle and bustle of city life. Large windows and a Juliet balcony allow ample natural light to flood the space, creating a bright and inviting atmosphere. The apartment features hardwood flooring in the hallway and reception room, tiles in the kitchen and bathroom, and carpet in the bedroom, offering a blend of comfort and elegance.

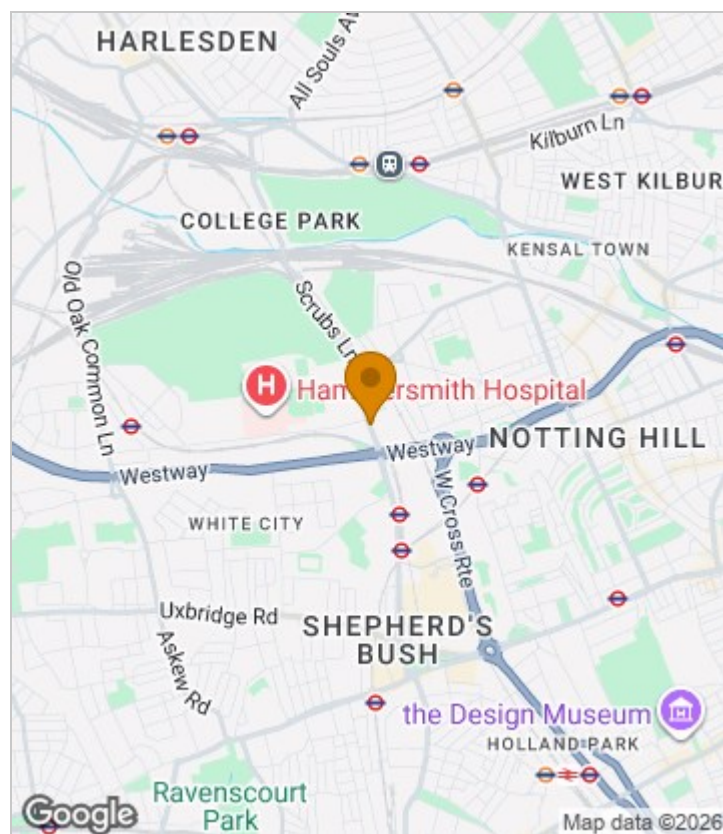
Ideally situated near Westfield London, the Bush Theatre, Shepherd's Bush Market, and the redeveloped Television Centre, this location provides easy access to a range of amenities and excellent transport links via the Central and Hammersmith & City Lines. The lively neighbourhood also hosts local parks and entertainment venues like the O2 Shepherd's Bush Empire.

The building itself features large windows, balconies, and ground-floor commercial shops such as Nisa Local. Supported by well-maintained green spaces, this apartment is ideal for modern, functional living. The property is offered furnished yet provides a canvas for personalisation. Available from end July.

Council Tax Band C—Hammersmith and Fulham.

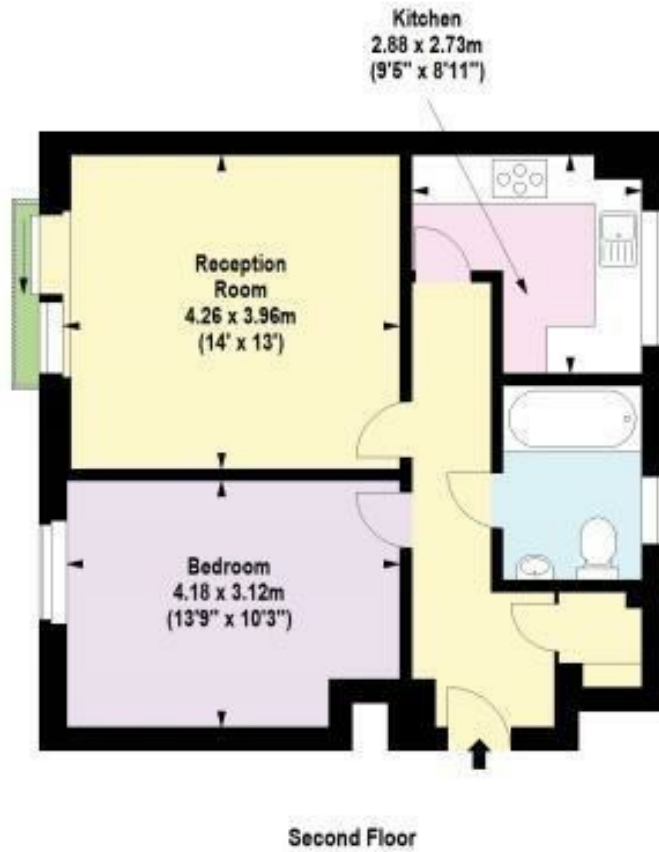
Deposit: One weeks' rent to reserve, with a security deposit of either 5 weeks' rent (for properties under £50,000pa) or 6 weeks' rent (for those over £50,000pa).

Area Map





Floor Plan



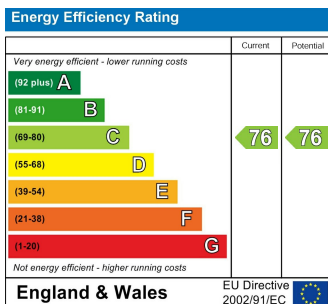
For Identification Purposes Only. Not To Scale. © www.totalvista.uk 2019

**Cavell House,
Wood Lane, W12**

Approx. Gross Internal Area
60.82 Sq M - 547 Sq Ft



Energy Efficiency Graph



Viewing

Please contact our Lettings SB Office on 0208 740 8740 if you wish to arrange a viewing appointment for this property or require further information.

- CONTEMPORARY LIVING
- SPACIOUS RECEPTION ROOM
- SLEEK BATHROOM
- JULIET BALCONY
- EXCELLENT TRANSPORT LINKS
- MODERN FINISHES AND ELEGANT DESIGN
- FUNCTIONAL AND WELL-EQUIPPED KITCHEN
- ABUNDANT NATURAL LIGHT
- CLOSE TO LOCAL AMENITIES
- IDEAL FOR MODERN, FUNCTIONAL LIVING

For further information contact:

Lettings SB, 234 Uxbridge Road, Shepherds Bush, London, W12 7JD

Tel: 0208 740 8740 Email: enquiries@jorgensenturner.com

<https://www.jorgensenturner.com/>

Disclaimer

These particulars, whilst believed to be accurate are set out as a general outline only for guidance and do not constitute any part of an offer or contract. Intending purchasers should not rely on them as statements of representation of fact, but must satisfy themselves by inspection or otherwise as to their accuracy. No person in this firm's employment has the authority to make or give any representation or warranty in respect of the property.