



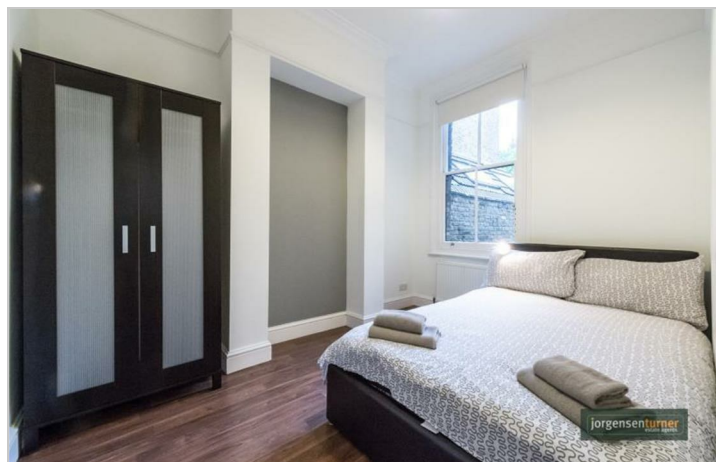
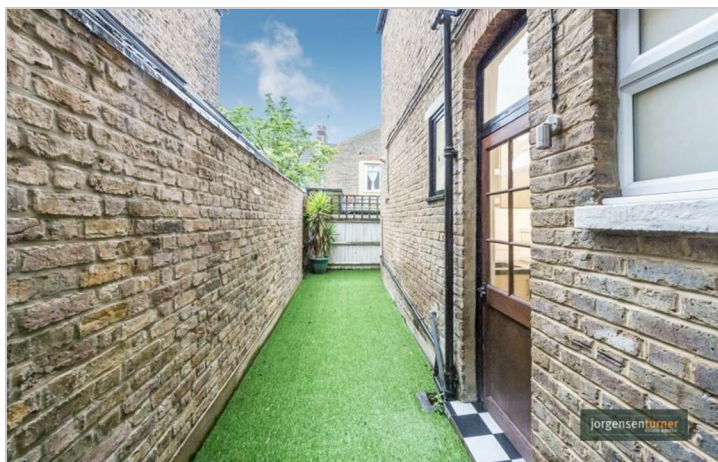
Glenroy Street, Shepherds  
Bush, W12

£2,150 Per Month



# Glenroy Street, Shepherds Bush, W12

£2,150 Per Month



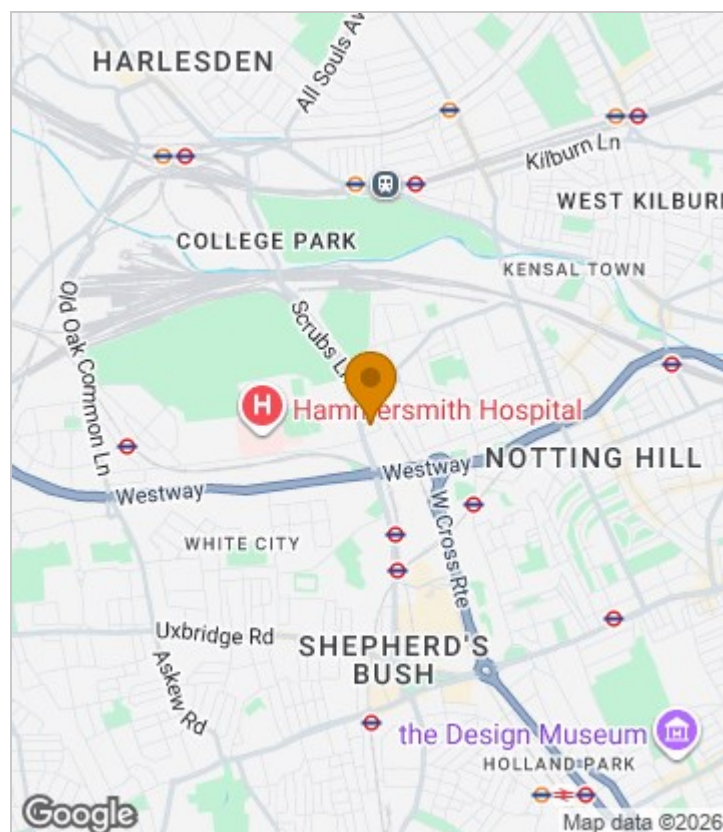
## Summary Description

**\*\*AVAILABLE NOW\*\*** Jorgensen Turner estate agents Shepherds Bush are pleased to offer this charming two double bedroom garden flat. This well proportioned apartment offers ample living space and plenty of natural light. The living room is an ideal entertaining space with a beautiful working fire place. This exceptional property benefits from two equally sized double bedrooms, modern bathroom suite and delightful fitted kitchen. Additional benefits include an attractive private garden, wooden floors throughout and an abundance of storage space. The flat is located on a beautiful residential street within 4 minutes walk from White City and Wood Lane stations. It is available soon on a furnished basis.

Council Tax Band D—Hammersmith & Fulham.

Deposit: One weeks' rent to reserve, with a security deposit of either 5 weeks' rent (for properties under £50,000pa) or 6 weeks' rent (for those over £50,000pa).

## Area Map





# Floor Plan

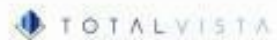


Ground Floor

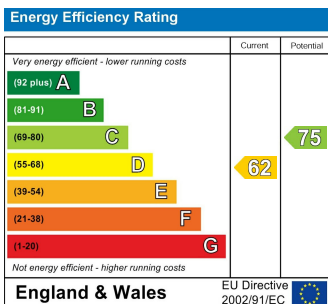
For Identification Purposes Only, Not To Scale. © www.alanaiken.com 2017

Glenroy Street, W12

Approx. Gross Internal Area  
66.00 Sq M - 692 Sq Ft



## Energy Efficiency Graph



## Viewing

Please contact our Lettings SB Office on 0208 740 8740 if you wish to arrange a viewing appointment for this property or require further information.

- TWO DOUBLE BEDROOMS
- PRIVATE GARDEN
- LARGE RECEPTION/ DINING ROOM
- CLOSE TO IMPERIAL COLLEGE WHITE CITY
- WALKING DISTANCE TO CENTRAL LINE TUBE
- PERFECT FOR A SMALL FAMILY OR TWO SHARERS
- FURNISHED
- AVAILABLE NOW

For further information contact:

Lettings SB, 234 Uxbridge Road, Shepherds Bush, London, W12 7JD

Tel: 0208 740 8740 Email: [enquiries@jorgensenturner.com](mailto:enquiries@jorgensenturner.com)

<https://www.jorgensenturner.com/>

### Disclaimer

These particulars, whilst believed to be accurate are set out as a general outline only for guidance and do not constitute any part of an offer or contract. Intending purchasers should not rely on them as statements of representation of fact, but must satisfy themselves by inspection or otherwise as to their accuracy. No person in this firm's employment has the authority to make or give any representation or warranty in respect of the property.