

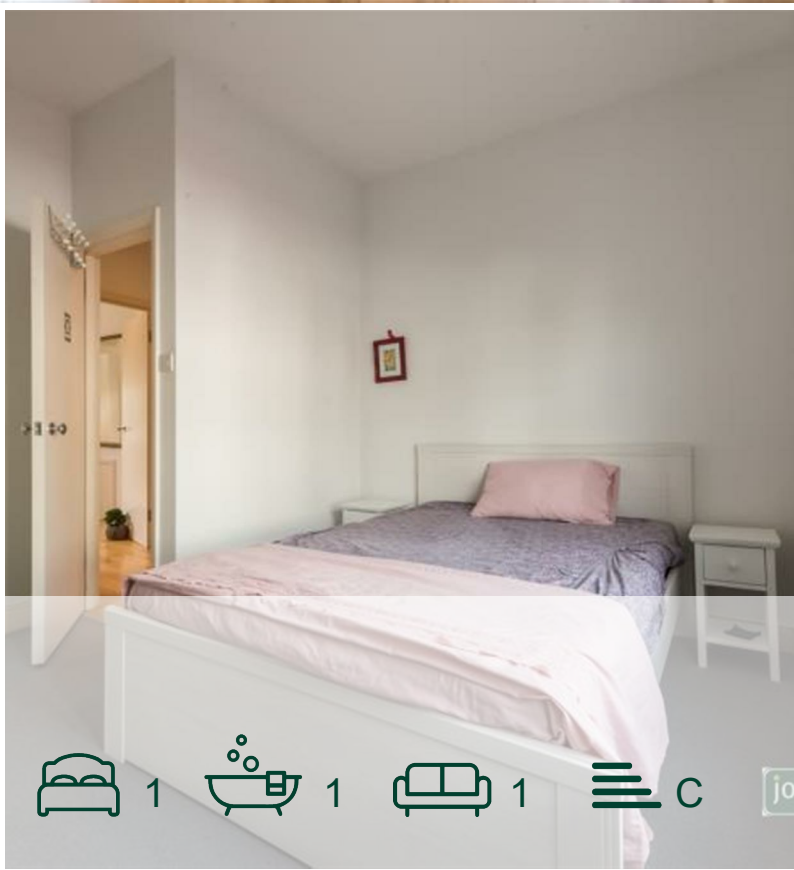


jorgensenturner  
estate agents



Askew Crescent,  
Shepherd's Bush, W12

£1,695 Per Month



jo  1  1  1  C jo

# Askew Crescent, Shepherd's Bush, W12

£1,695 Per Month



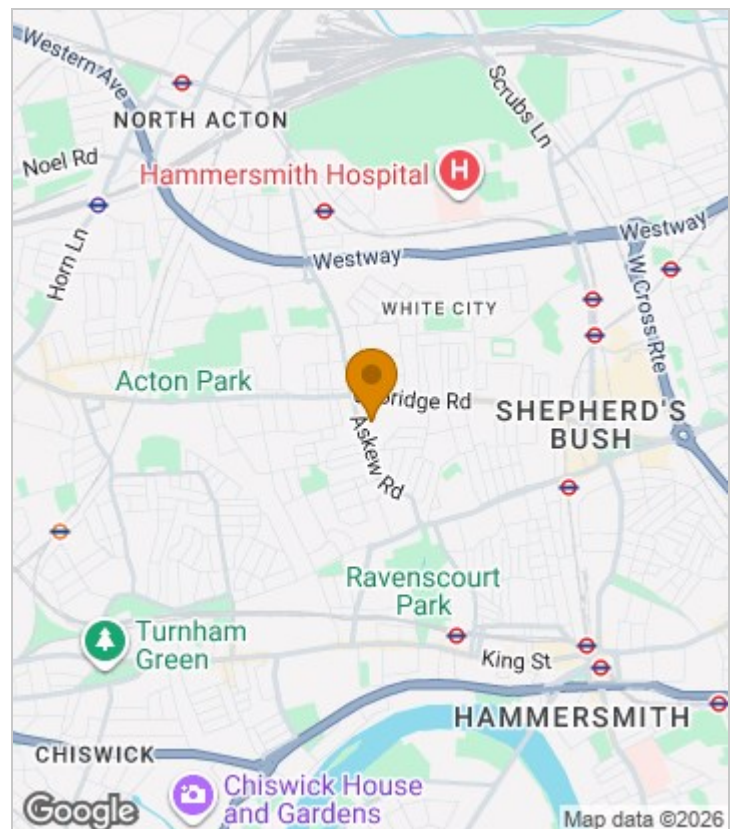
## Summary Description

Jorgensen Turner estate agents Shepherds Bush are pleased to offer this stunning one bedroom, raised ground floor flat, which is located off Askew Road. The property is finished to an excellent high standard throughout and benefits from having a modern fully fitted kitchen, stunning reception room, spacious double bedroom and contemporary bathroom. The property is offered part-furnished and available mid-January 2026

Council Tax Band: D – H&F Deposit:

A holding deposit of 1 weeks rent will be required to secure the property and a Security deposit of 5 weeks rent (for rents under £50,000 pa) or 6 weeks (for rents over £50,000 pa)

## Area Map





# Floor Plan



Raised Ground Floor

For Identification Purposes Only. Not To Scale. © www.totalvista.uk 2020

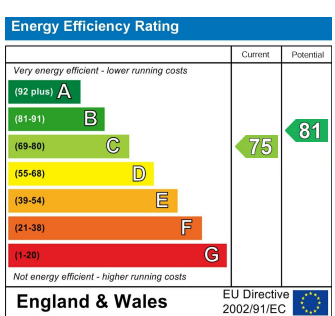


Askew Crescent, W12

Approx. Gross Internal Area  
41.34 Sq M - 445 Sq Ft



## Energy Efficiency Graph



## Viewing

Please contact our Lettings SB Office on 0208 740 8740 if you wish to arrange a viewing appointment for this property or require further information.

- Stunning one bed flat
- Excellent high standard
- Modern bathroom suite
- Council Tax Band D - H&F
- Raised ground floor
- Fully fitted kitchen throughout
- Offered part-furnished

For further information contact:

Lettings SB, 234 Uxbridge Road, Shepherds Bush, London, W12 7JD

Tel: 0208 740 8740 Email: [enquiries@jorgensenturner.com](mailto:enquiries@jorgensenturner.com)

<https://www.jorgensenturner.com/>

### Disclaimer

These particulars, whilst believed to be accurate are set out as a general outline only for guidance and do not constitute any part of an offer or contract. Intending purchasers should not rely on them as statements of representation of fact, but must satisfy themselves by inspection or otherwise as to their accuracy. No person in this firms employment has the authority to make or give any representation or warranty in respect of the property.

