




jt | JORGENSENTURNER



Coningham Road,
Shepherds Bush, W12

£2,350 Per Month



jt |  2  1  1  D jt |

Coningham Road, Shepherds Bush, W12

£2,350 Per Month



Summary Description

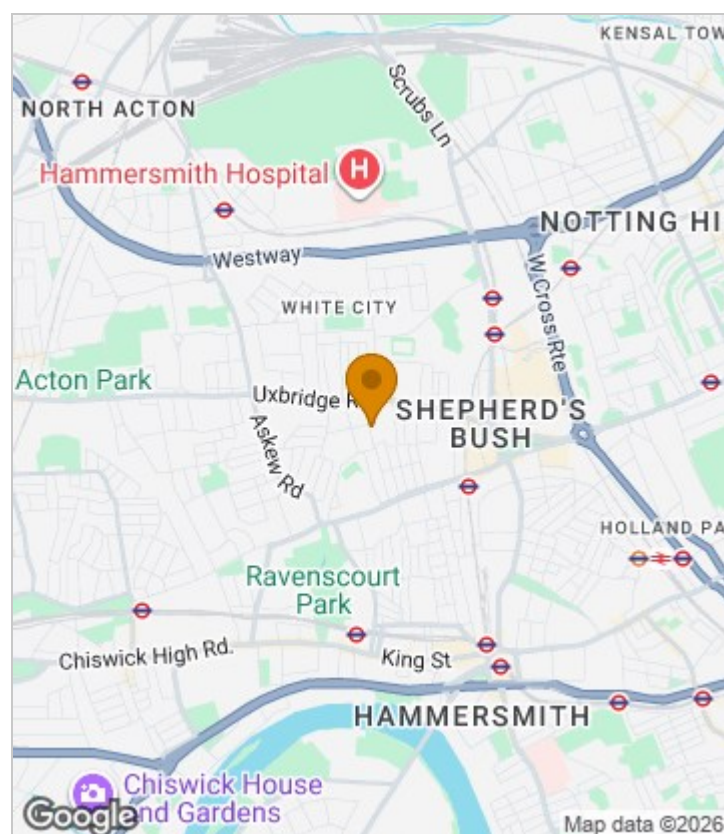
****NEW TO THE MARKET**** Jorgensen Turner are pleased to offer this spacious two double bedroom property on Coningham Road. With two lovely bedrooms and a large open-plan kitchen and living room this lovely flat is perfect for two sharers, small family or a couple wanting a home office or guest bedroom.

Offered furnished and available 29th May 2026

Council Tax Band D—Hammersmith and Fulham.

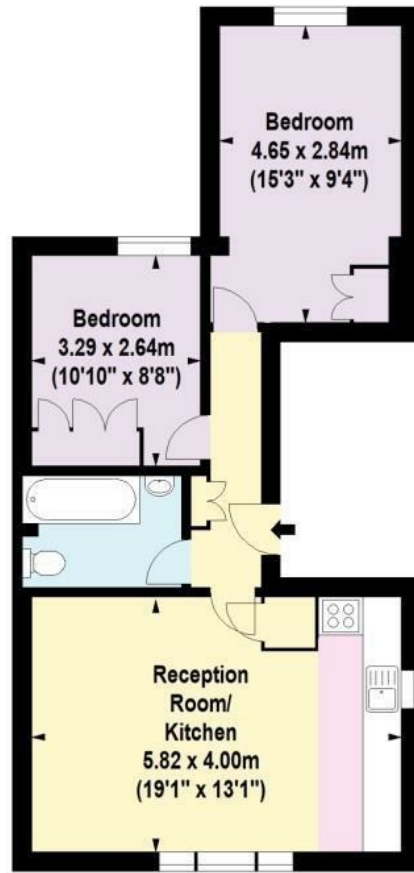
Deposit: One weeks' rent to reserve, with a security deposit of either 5 weeks' rent (for properties under £50,000pa) or 6 weeks' rent (for those over £50,000pa).

Area Map





Floor Plan



First Floor

For Identification Purposes Only. Not To Scale. © www.totalvista.uk 2023

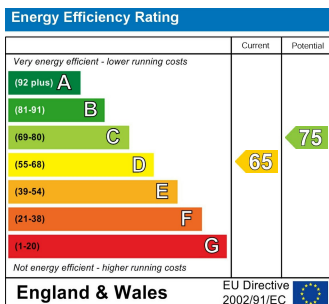


Coningham Road, W12

Approx. Gross Internal Area
55.18 Sq M - 594 Sq Ft



Energy Efficiency Graph



Viewing

Please contact our Lettings SB Office on 0208 740 8740 if you wish to arrange a viewing appointment for this property or require further information.

- FURNISHED
- OPEN-PLAN KITCHEN
- BRIGHT AND AIRY
- BUILT IN STORAGE
- TWO DOUBLE BEDROOM
- MODERN BATHROOM
- WALKING DISTANCE TO MULTIPLE TUBE LINES.
- HIGH CEILINGS

For further information contact:

Lettings SB, 234 Uxbridge Road, Shepherds Bush, London, W12 7JD

Tel: 0208 740 8740 Email: enquiries@jorgensenturner.com

<https://www.jorgensenturner.com/>

Disclaimer

These particulars, whilst believed to be accurate are set out as a general outline only for guidance and do not constitute any part of an offer or contract. Intending purchasers should not rely on them as statements of representation of fact, but must satisfy themselves by inspection or otherwise as to their accuracy. No person in this firm's employment has the authority to make or give any representation or warranty in respect of the property.