

Uxbridge Road, Shepherds  
Bush, W12

£3,600 Per Month



# Uxbridge Road, Shepherds Bush, W12

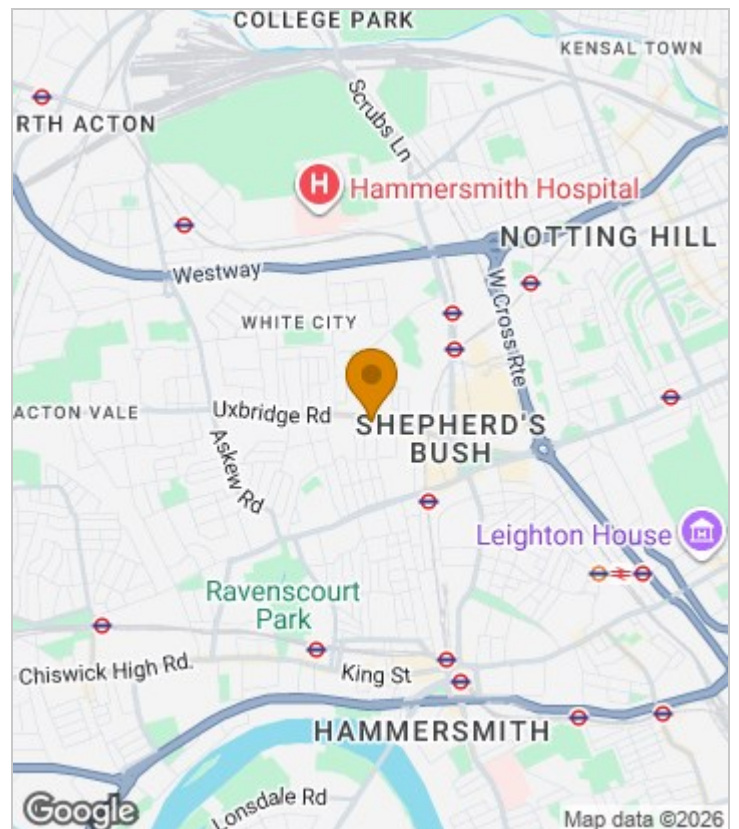
£3,600 Per Month



## Summary Description

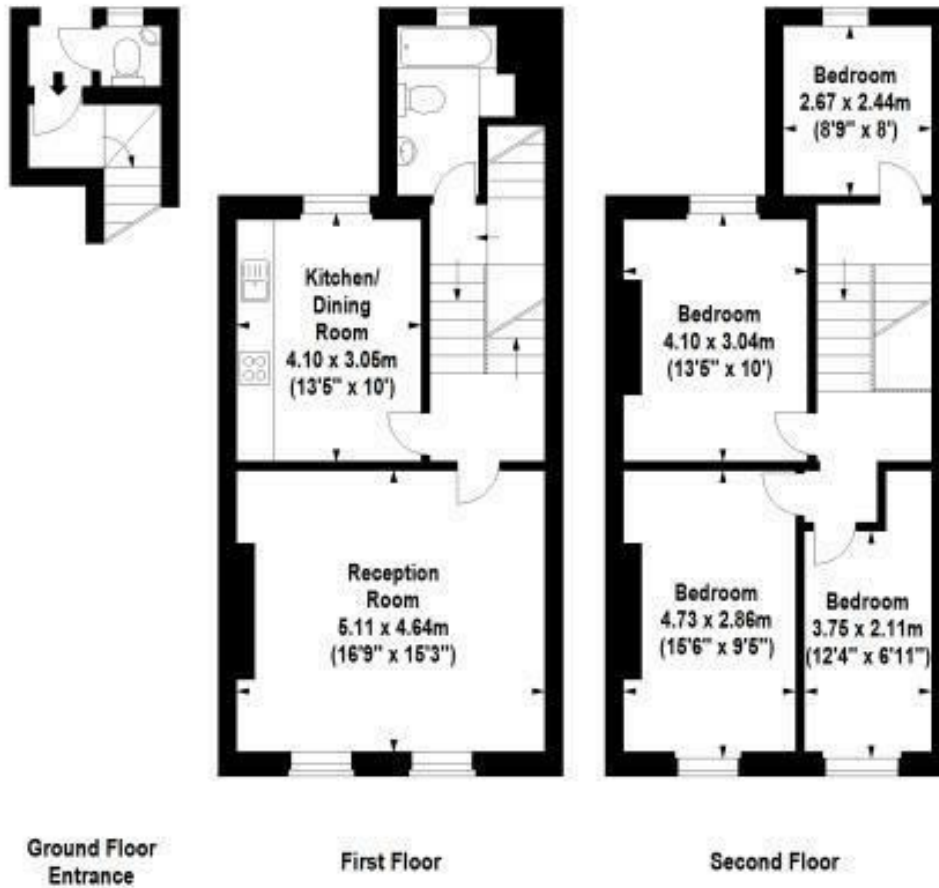
Jorgensen Turner Shepherds Bush are delighted to present this conveniently located four double bedroom maisonette arranged over three floors in the heart of Shepherds Bush. This property is ideal for sharers offering an abundance of space and comprises of a spacious reception room with high ceilings, four generous double bedrooms, contemporary bathroom, additional WC and modern eat in kitchen. This property is within easy reach of local amenities and various transport links including Shepherds Bush tube station (Central and Hammersmith & City Lines and the overground). Available late July, early viewings are highly recommended.

## Area Map





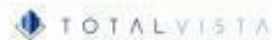
# Floor Plan



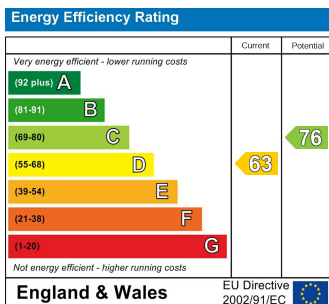
For identification Purposes Only. Not To Scale. © www.totalvista.uk 2017

Uxbridge Road, W12

Approx. Gross Internal Area  
108.94 Sq M - 1163 Sq Ft  
External Wc Area  
0.33 Sq M - 10 Sq Ft



## Energy Efficiency Graph



## Viewing

Please contact our Lettings SB Office on 0208 740 8740 if you wish to arrange a viewing appointment for this property or require further information.

- FOUR DOUBLE BEDROOMS
- FURNISHED
- CLOSE TO AMENITIES
- PERFECT FOR SHARERS

For further information contact:

Lettings SB, 234 Uxbridge Road, Shepherds Bush, London, W12 7JD

Tel: 0208 740 8740 Email: [enquiries@jorgensenturner.com](mailto:enquiries@jorgensenturner.com)

<https://www.jorgensenturner.com/>

### Disclaimer

These particulars, whilst believed to be accurate are set out as a general outline only for guidance and do not constitute any part of an offer or contract. Intending purchasers should not rely on them as statements of representation of fact, but must satisfy themselves by inspection or otherwise as to their accuracy. No person in this firm's employment has the authority to make or give any representation or warranty in respect of the property.