



jt | JORGENSENTURNER



Collingbourne Road,
Shepherds Bush, W12

£2,200 Per Month



jt 2 1 2 D jt

Collingbourne Road, Shepherds Bush, W12

£2,200 Per Month

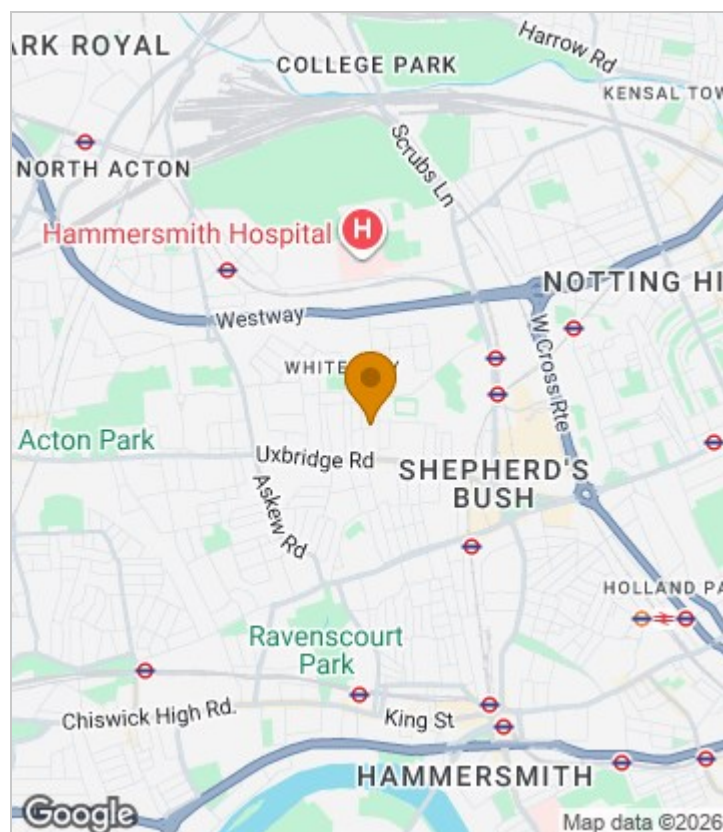


Summary Description

****NEW TO THE MARKET**** Two large double bedroom plus an extra study room. This wonderful ground floor property is perfect for two sharers or a small family. Situated on lovely Collingbourne Road this super spacious property is available 12th July 2025.

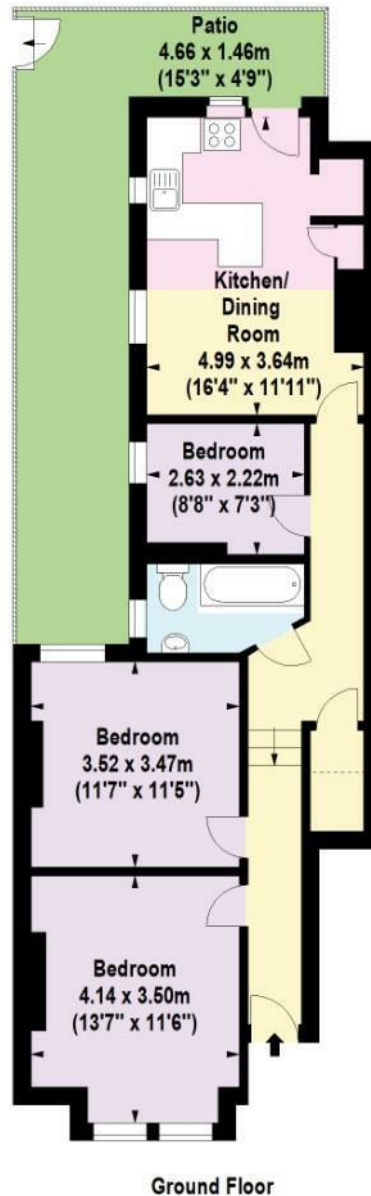
Call now to arrange a viewing.

Area Map





Floor Plan



For Identification Purposes Only. Not To Scale. © www.totalvista.uk 2025

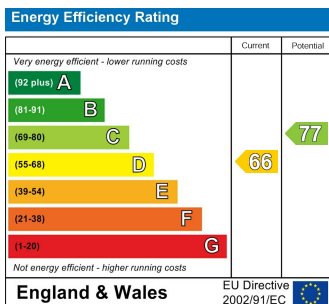


Collingbourne Road , W12

Approx. Gross Internal Area
68.47 Sq M - 737 Sq Ft



Energy Efficiency Graph



Viewing

Please contact our Lettings SB Office on 0208 740 8740 if you wish to arrange a viewing appointment for this property or require further information.

- TWO DOUBLE BEDROOMS
- OPEN-PLAN KITCHEN/ LIVING ROOM
- FURNISHED
- EXTRA STUDY ROOM
- PRIVATE PATIO GARDEN
- AVAILABLE 12TH JULY

For further information contact:

Lettings SB, 234 Uxbridge Road, Shepherds Bush, London, W12 7JD

Tel: 0208 740 8740 Email: enquiries@jorgensenturner.com

<https://www.jorgensenturner.com/>

Disclaimer

These particulars, whilst believed to be accurate are set out as a general outline only for guidance and do not constitute any part of an offer or contract. Intending purchasers should not rely on them as statements of representation of fact, but must satisfy themselves by inspection or otherwise as to their accuracy. No person in this firm's employment has the authority to make or give any representation or warranty in respect of the property.