



jorgensenturner  
estate agents



Loftus Road, Shepherds  
Bush, London

£1,750 Per Month



1



1



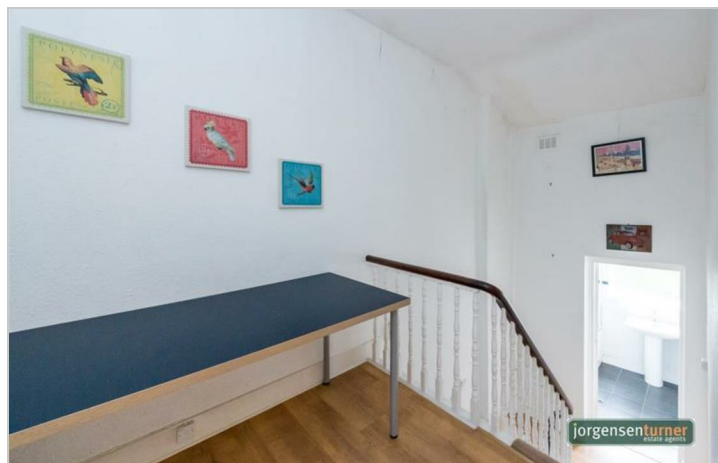
1



D

# Loftus Road, Shepherd's Bush, London

£1,750 Per Month



## Summary Description

Jorgensen Turner Estate Agents proudly present this charming second-floor Victorian period conversion newly available to the market. This one-bedroom property stands out with its well-organised layout and stylish features, adding a touch of classic elegance to modern living.

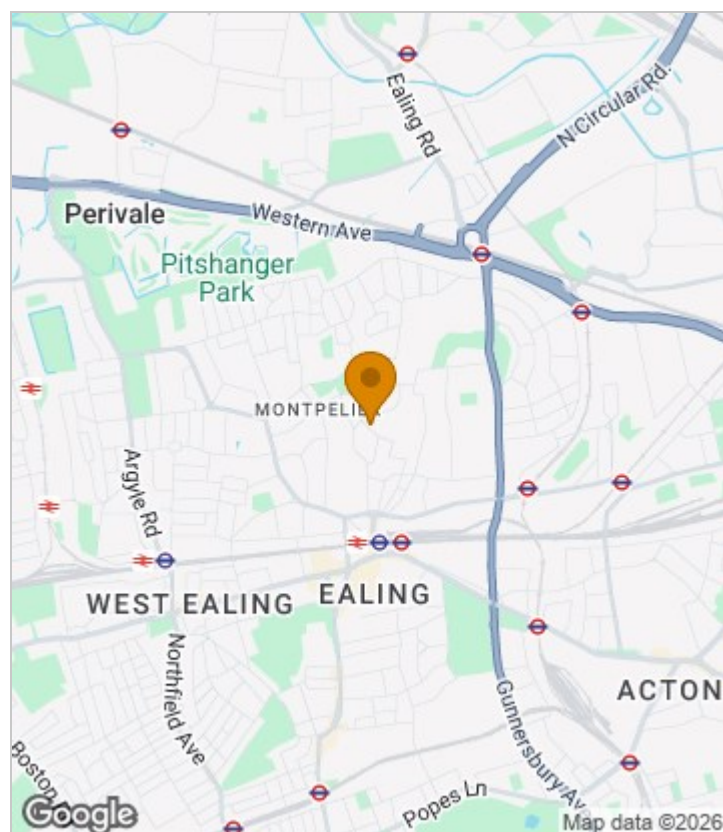
The apartment showcases a high standard of presentation throughout, with a focus on comfort and style. At the heart of this home is its bright reception area, designed for both relaxation and entertaining. The kitchen, featuring light wood cabinetry, white countertops, and essential appliances, is perfect for preparing meals with ease. Accompanying this is a modern bathroom with a walk-in shower and contemporary fixtures, ensuring convenience for residents.

Settled on Loftus Road in the vibrant and diverse neighbourhood of Shepherd's Bush, this property offers a beautiful and peaceful retreat with its classic Victorian-style façade, exposed brickwork, white stucco accents, and decorative columns. The mature trees add to its charming curb appeal. It's ideally situated for easy access to the extensive amenities and excellent transport links of Shepherd's Bush, making it a convenient and desirable location. Notable landmarks such as Westfield London, the Bush Theatre, and Shepherd's Bush Market are nearby, along with parks, fitness studios, healthcare services, and a variety of shopping and dining options. The apartment is offered furnished and provides a canvas for personalisation. Available late-July.

Council Tax Band C—Hammersmith & Fulham.

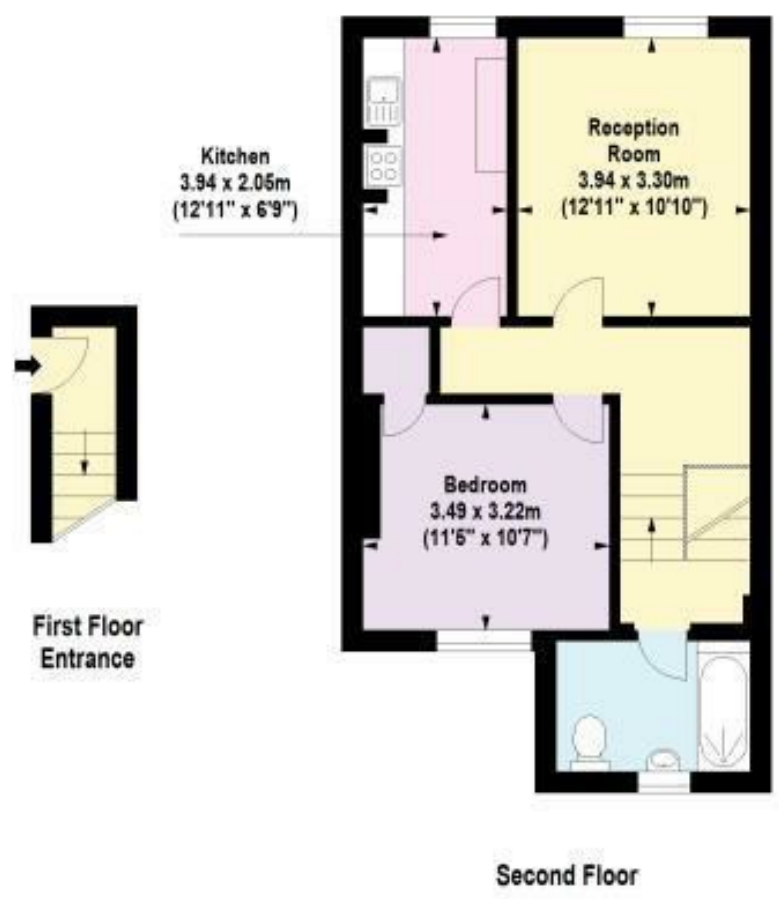
Deposit: One weeks' rent to reserve, with a security deposit of either 5 weeks' rent (for properties under £50,000pa) or 6 weeks' rent (for those over £50,000pa).

## Area Map





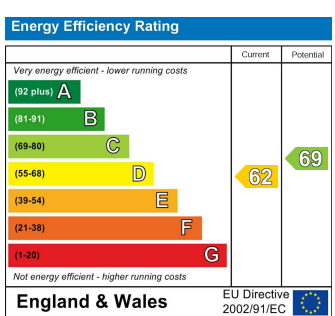
# Floor Plan



For Identification Purposes Only. Not To Scale. © www.totalvista.uk 2019

**Loftus Road, W12**      **Approx. Gross Internal Area**  
64.16 Sq M - 683 Sq Ft      **TOTALVISTA**

## Energy Efficiency Graph



## Viewing

Please contact our Lettings SB Office on 0208 740 8740 if you wish to arrange a viewing appointment for this property or require further information.

- VICTORIAN PERIOD CONVERSION
- MODERN WALK-IN SHOWER
- CLOSE TO WESTFIELD LONDON AND LOCAL LANDMARKS
- CLOSE TO SHOPPING AND DINING OPTIONS
- AVAILABLE FROM LATE-JULY
- BRIGHT AND AIRY RECEPTION AREA
- CONTEMPORARY FIXTURES IN BATHROOM
- EXTENSIVE TRANSPORT LINKS NEARBY
- OFFERED FURNISHED

For further information contact:  
 Lettings SB, 234 Uxbridge Road, Shepherds Bush, London, W12 7JD  
 Tel: 0208 740 8740 Email: [enquiries@jorgensenturner.com](mailto:enquiries@jorgensenturner.com)  
<https://www.jorgensenturner.com/>

### Disclaimer

These particulars, whilst believed to be accurate are set out as a general outline only for guidance and do not constitute any part of an offer or contract. Intending purchasers should not rely on them as statements of representation of fact, but must satisfy themselves by inspection or otherwise as to their accuracy. No person in this firms employment has the authority to make or give any representation or warranty in respect of the property.