



jt | JORGENSENTURNER



Uxbridge Road, Shepherds
Bush, W12

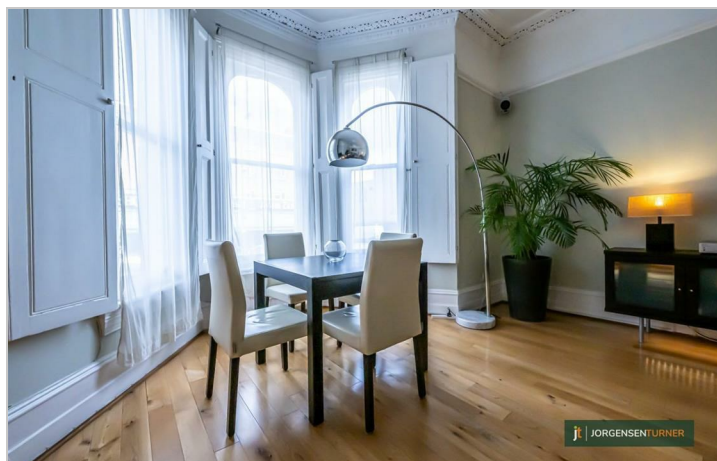
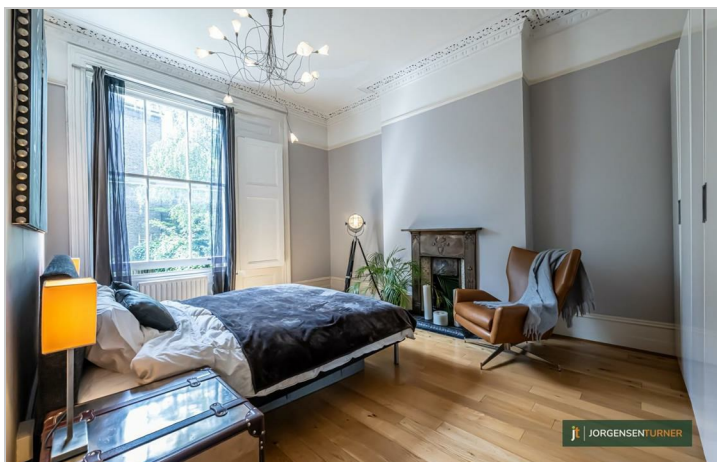
£2,350 Per Month



jt 2 1 1 C jt

Uxbridge Road, Shepherds Bush, W12

£2,350 Per Month



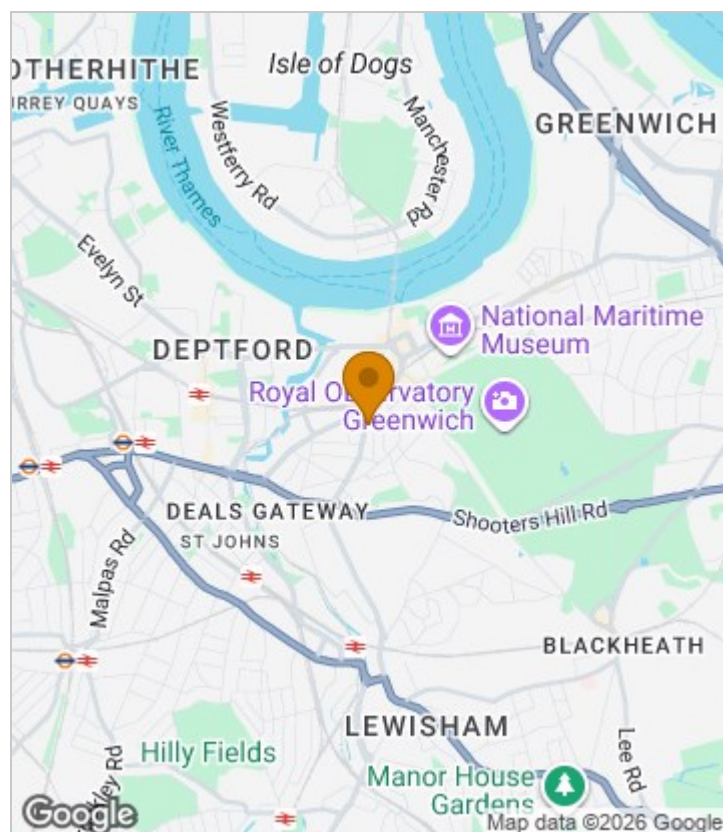
Summary Description

****NEW TO THE MARKET**** Jorgensen Turner is proud to offer this stunning modern and stylish two double bedroom raised ground floor apartment. Perfect for a couple, sharers or small family. Offered part furnished this gorgeous flat is just minutes away from all the wonderful transport links, cafes and shops Shepherds Bush has to offer. Early viewing are highly recommended.

Council Tax Band C—Hammersmith & Fulham.

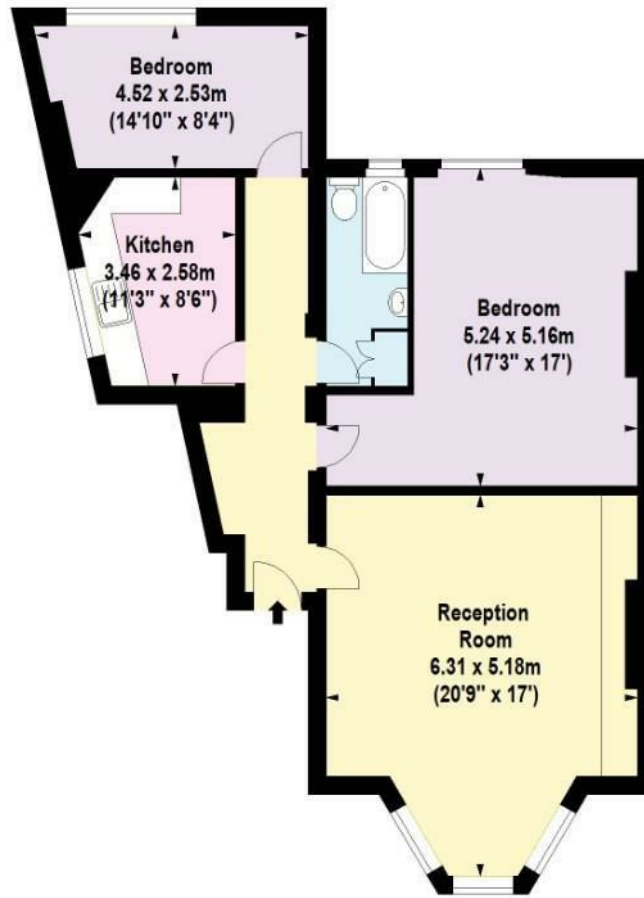
Deposit: One weeks' rent to reserve, with a security deposit of either 5 weeks' rent (for properties under £50,000pa) or 6 weeks' rent (for those over £50,000pa).

Area Map





Floor Plan



Raised Ground Floor

For Identification Purposes Only. Not To Scale. © www.totalvista.uk 2024

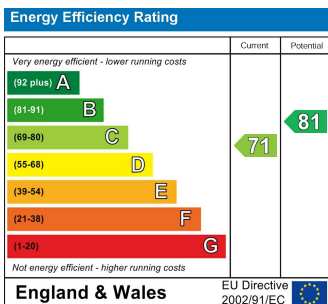


Uxbridge Road, W12

Approx. Gross Internal Area
85.00 Sq M - 915 Sq Ft



Energy Efficiency Graph



Viewing

Please contact our Lettings SB Office on 0208 740 8740 if you wish to arrange a viewing appointment for this property or require further information.

- TWO DOUBLE BEDROOM
- MODERN KITCHEN
- WOOD FLOORING THROUGHOUT
- AVAILABLE MID JUNE
- SPACIOUS LIVING AND DINING AREA
- EXCELLENT TRANSPORT LINKS AND AMENITIES
- FURNISHED

For further information contact:

Lettings SB, 234 Uxbridge Road, Shepherds Bush, London, W12 7JD

Tel: 0208 740 8740 Email: enquiries@jorgensenturner.com

<https://www.jorgensenturner.com/>

Disclaimer

These particulars, whilst believed to be accurate are set out as a general outline only for guidance and do not constitute any part of an offer or contract. Intending purchasers should not rely on them as statements of representation of fact, but must satisfy themselves by inspection or otherwise as to their accuracy. No person in this firm's employment has the authority to make or give any representation or warranty in respect of the property.