



jt | JORGENSENTURNER



Vespan Road, Shepherds  
Bush, London

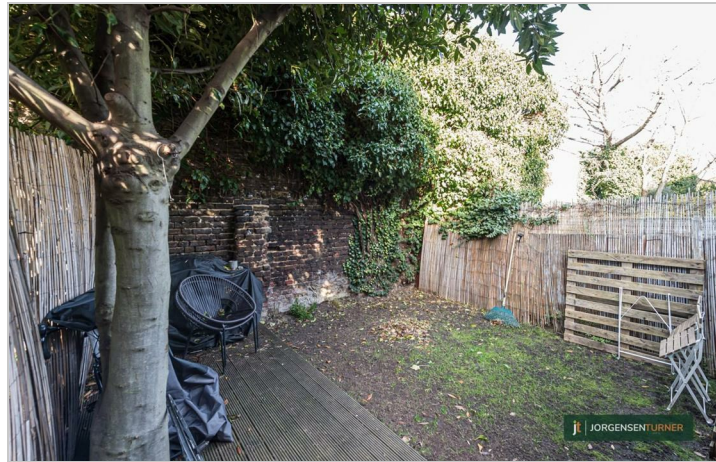
£1,700 Per Month



jt |  1  1  1  D jt

# Vespan Road, Shepherds Bush, London

£1,700 Per Month



## Summary Description

Jorgensen Turner Estate Agents proudly present this charming Victorian apartment, now available on the market. This one-bedroom property, spanning two levels, offers a delightful blend of period charm and contemporary living.

The apartment boasts a bright reception room, highlighted by a beautiful bay window, creating an inviting space for relaxation or entertaining. The modern kitchen is equipped with sleek cabinetry and integrated appliances, providing a stylish setting for cooking for yourself or for friends. A separate room which is perfect for either an office or nursery complements the spacious layout, offering flexibility for modern living. The contemporary bathroom adds further convenience, all presented to a high standard throughout.

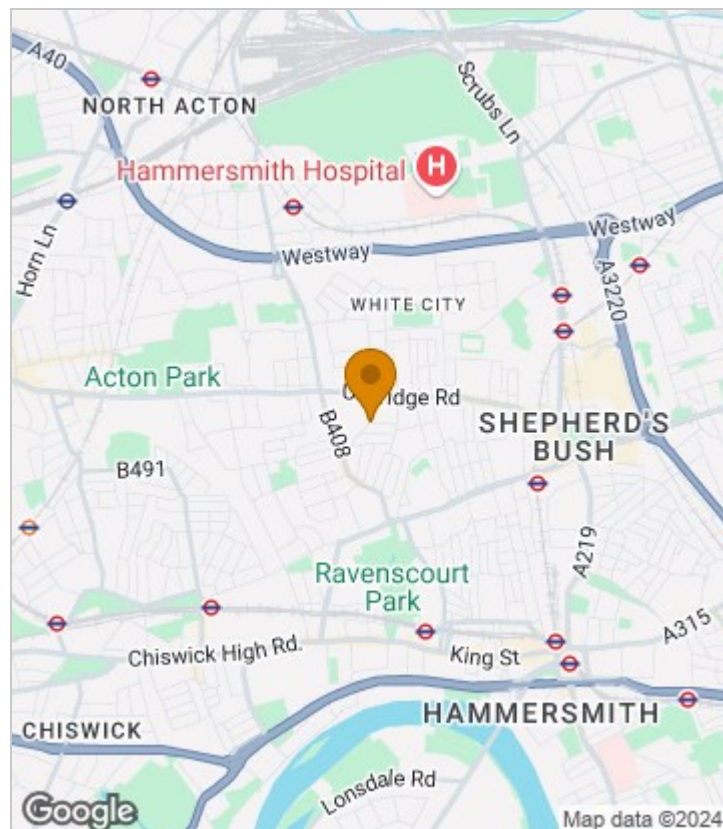
Step outside to your private, secluded garden, featuring decking and lush greenery, offering a peaceful sanctuary from the hustle and bustle of city life. Set on a quiet residential street, this home offers easy access to the amenities and excellent transport links of Shepherd's Bush, as well as the nearby Westfield London, Wormwood Scrubs, and Hammersmith Park.

With its classic red-brick Victorian exterior and elegant white detailing, this property is ideal for professionals, couples, or small families looking to enjoy stylish living. Offered part-furnished and available from mid-November, this property provides fantastic accommodation and lifestyle.

Council Tax Band D—Hammersmith & Fulham.

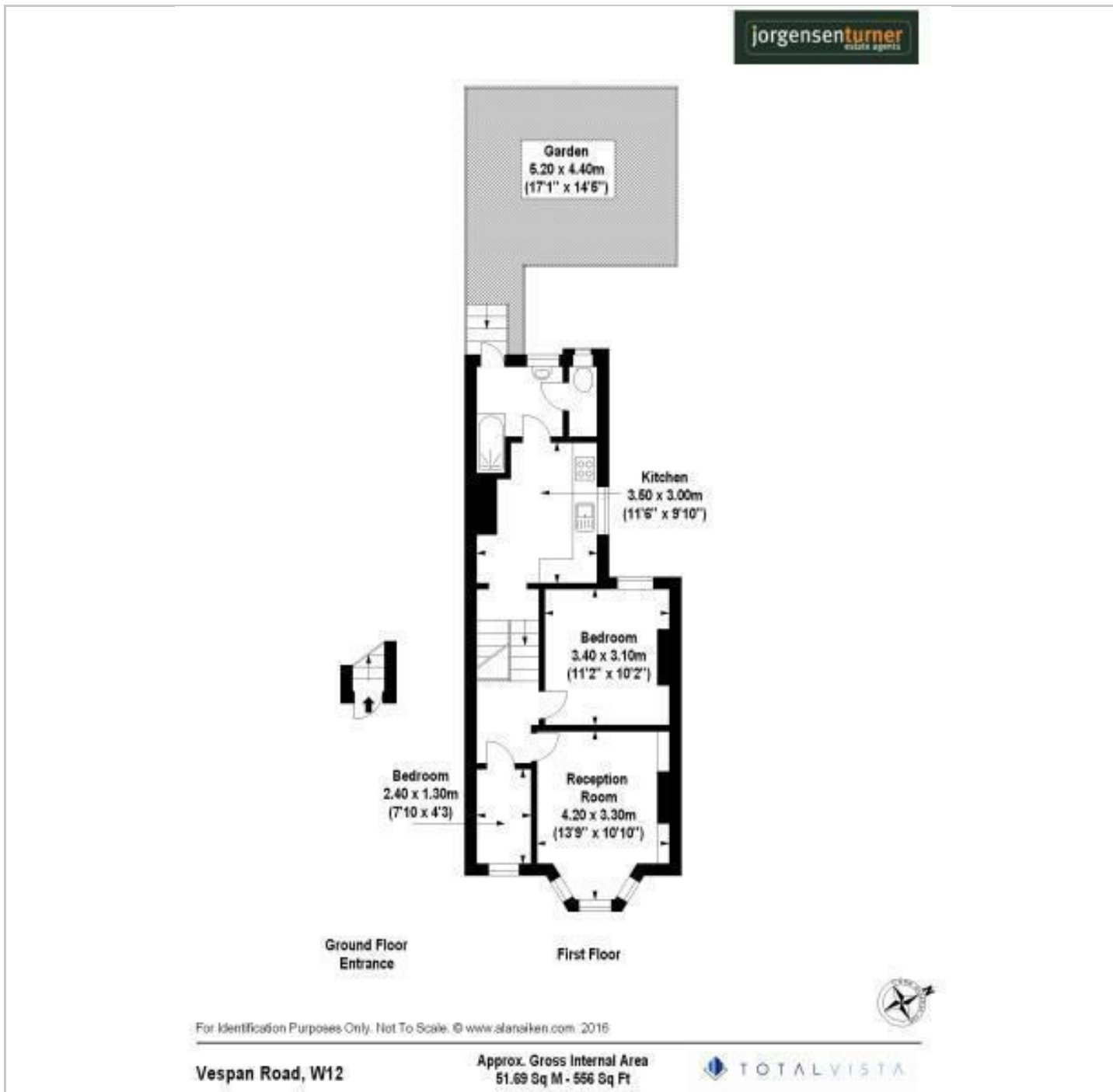
Deposit: One weeks' rent to reserve, with a security deposit of either 5 weeks' rent (for properties under £50,000pa) or 6 weeks' rent (for those over £50,000pa).

## Area Map

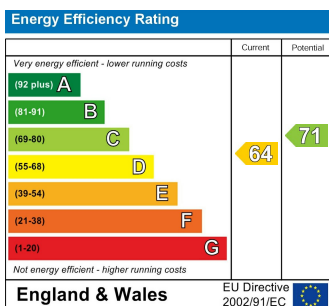




## Floor Plan



## Energy Efficiency Graph



## Viewing

Please contact our Lettings SB Office on 0208 740 8740 if you wish to arrange a viewing appointment for this property or require further information.

- FIRST FLOOR CONVERSION
- SEPARATE OFFICE / NURSERY FLAT
- ACCESS TO PRIVATE GARDEN
- LIGHT AND AIRY
- WELL PROPORTIONED
- OFFERED PART-FURNISHED ROOMS
- CLOSE TO AMENITIES AND
- AVAILABLE MID-NOVEMBER TRANSPORT

For further information contact:

Lettings SB, 234 Uxbridge Road, Shepherds Bush, London, W12 7JD

Tel: 0208 740 8740 Email: [enquiries@jorgensenturner.com](mailto:enquiries@jorgensenturner.com)

<https://www.jorgensenturner.com/>

### Disclaimer

These particulars, whilst believed to be accurate are set out as a general outline only for guidance and do not constitute any part of an offer or contract. Intending purchasers should not rely on them as statements of representation of fact, but must satisfy themselves by inspection or otherwise as to their accuracy. No person in this firm's employment has the authority to make or give any representation or warranty in respect of the property.

