



Lime Grove, Shepherds
Bush, W12

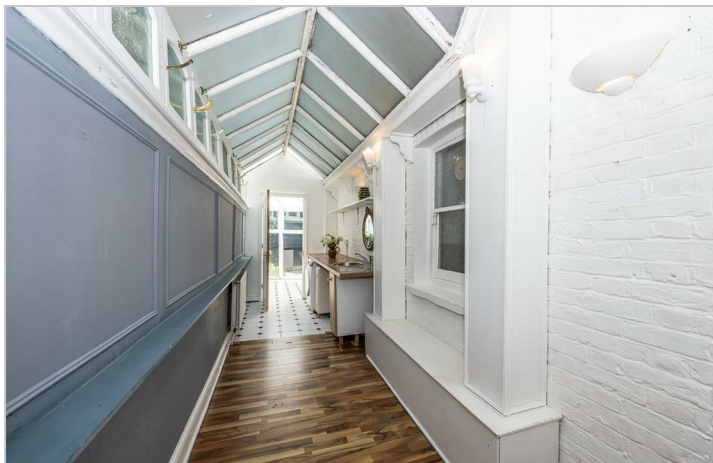
£2,950 Per Month



 2  1  1  E

Lime Grove, Shepherds Bush, W12

£2,950 Per Month



Summary Description

****NEW TO THE MARKET**** Jorgensen Turner are delighted to present this exceptional two-double-bedroom garden flat, complete with a conservatory, situated on a sought-after residential road in the heart of Shepherd's Bush.

The property offers a beautifully distinctive reception room featuring impressive high ceilings. Both double bedrooms include built-in wardrobes and newly fitted, high-quality carpets.

The kitchen is located on the lower ground floor and provides generous worktop space along with ample storage. A separate utility area and an attractive conservatory leading on to the private garden.

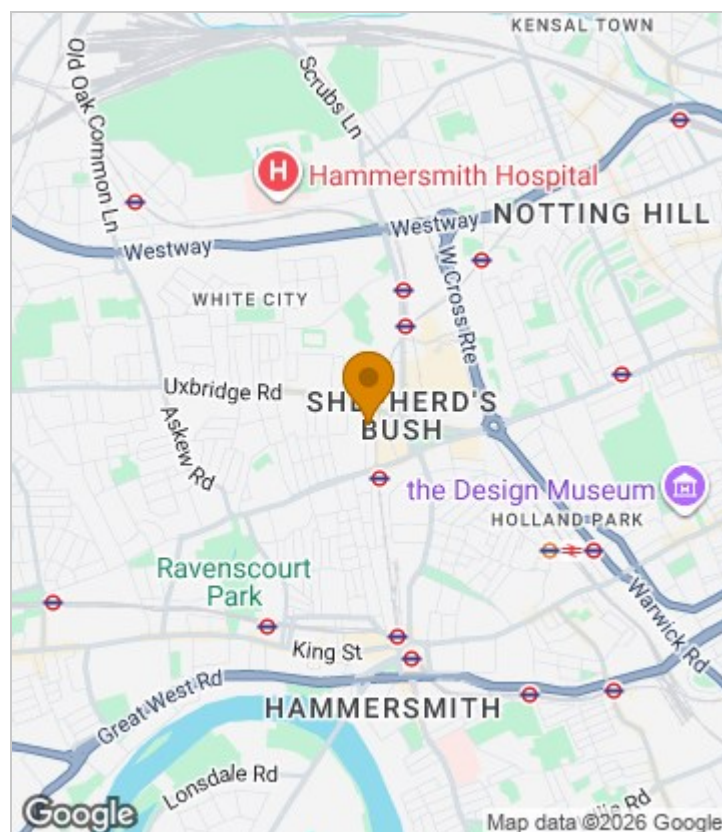
With its well-proportioned layout and desirable features, this property is ideally suited to a couple, two sharers, or a small family. Moments away from multiple tube stations, restaurants and Westfield White City.

Offered part furnished

Council Tax Band E —Hammersmith & Fulham.

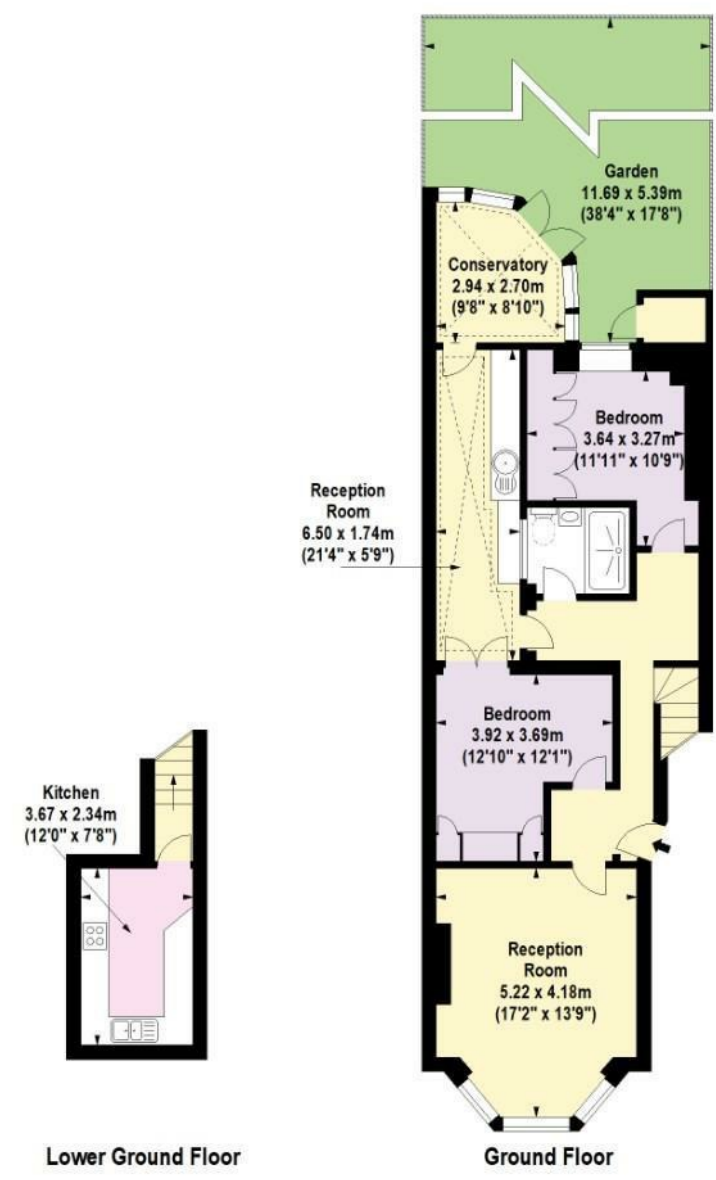
Deposit: One weeks' rent to reserve, with a security deposit of either 5 weeks' rent (for properties under £50,000pa) or 6 weeks' rent (for those over £50,000pa).

Area Map





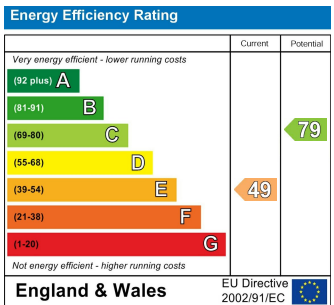
Floor Plan



For Identification Purposes Only. Not To Scale. © www.totalvista.uk 2026

Lime Grove, W12 **Approx. Gross Internal Area**
92.71 Sq M - 998 Sq Ft **TOTALVISTA**

Energy Efficiency Graph



Viewing

Please contact our Lettings SB Office on 0208 740 8740 if you wish to arrange a viewing appointment for this property or require further information.

- Two double bedrooms
- Large private garden
- conservatory
- Furnished to a high standard
- Central Shepherds Bush location
- Moments from Multiple tube stations
- Close to Imperial College, BBC White City and Westfield White City
- Available 22nd June 2026

For further information contact:
 Lettings SB, 234 Uxbridge Road, Shepherds Bush, London, W12 7JD
 Tel: 0208 740 8740 Email: enquiries@jorgensenturner.com
<https://www.jorgensenturner.com/>

Disclaimer

These particulars, whilst believed to be accurate are set out as a general outline only for guidance and do not constitute any part of an offer or contract. Intending purchasers should not rely on them as statements of representation of fact, but must satisfy themselves by inspection or otherwise as to their accuracy. No person in this firms employment has the authority to make or give any representation or warranty in respect of the property.