

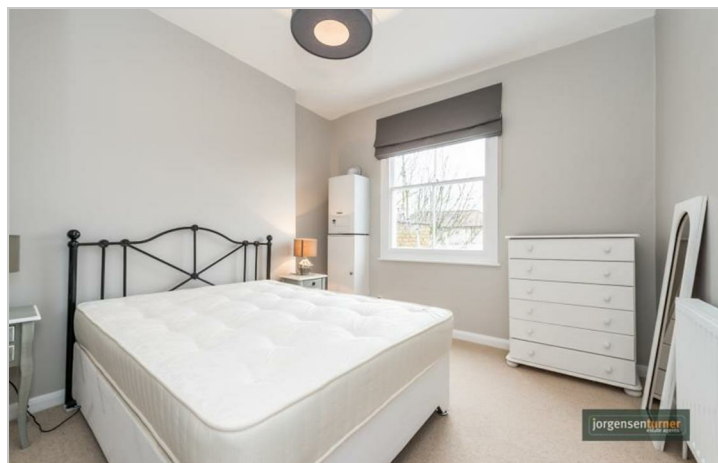
Stanlake Road, Shepherds
Bush, W12

£1,750 Per Month



Stanlake Road, Shepherds Bush, W12

£1,750 Per Month



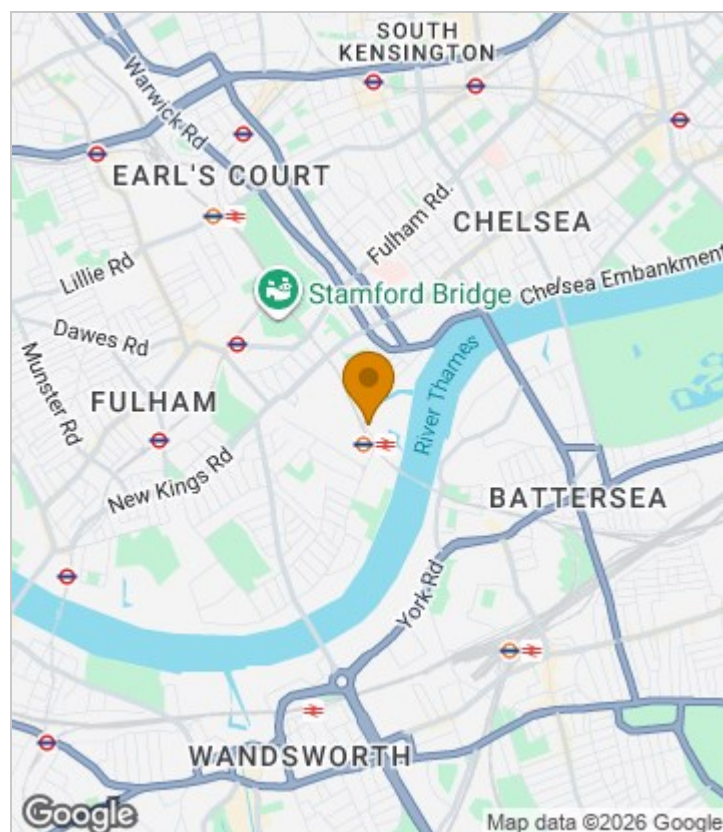
Summary Description

****STILL AVAILABLE **** Jorgensen Turner estate agents Shepherds Bush are proud to offer this beautifully presented top floor flat. The apartment is decorated to high standard throughout with modern fitted kitchen and contemporary shower room. Additional benefits include a spacious bedroom with abundance of storage and bright reception room. The flat is available from 18th June on a furnished basis. Located on a quiet residential road within walk-in distance to Shepherds Bush stations, Westfield White City and plenty of different bus routes.

Council Tax Band: C - H&F

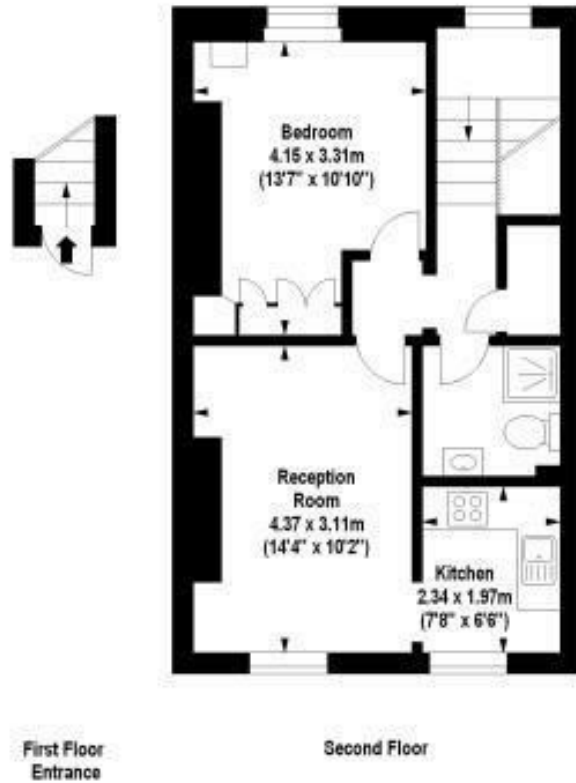
Deposit: A holding deposit of 1 weeks rent will be required to secure the property and a Security deposit of 5 weeks rent.

Area Map





Floor Plan



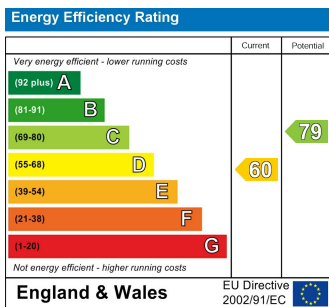
For Identification Purposes Only. Not To Scale. © www.stansaken.com 2017

Stanlake Road, W12

Approx. Gross Internal Area
46.36 Sq M - 499 Sq Ft



Energy Efficiency Graph



Viewing

Please contact our Lettings SB Office on 0208 740 8740 if you wish to arrange a viewing appointment for this property or require further information.

- BEAUTIFULLY PRESENTED THROUGHOUT
- BRIGHT AND SPACIOUS
- MOMENTS FROM MULTIPLE TUBE LINES
- FURNISHED
- BUILT-IN WARDROBES
- CLOSE TO WESTFIELD WHITE CITY

For further information contact:

Lettings SB, 234 Uxbridge Road, Shepherds Bush, London, W12 7JD

Tel: 0208 740 8740 Email: enquiries@jorgensenturner.com

<https://www.jorgensenturner.com/>

Disclaimer

These particulars, whilst believed to be accurate are set out as a general outline only for guidance and do not constitute any part of an offer or contract. Intending purchasers should not rely on them as statements of representation of fact, but must satisfy themselves by inspection or otherwise as to their accuracy. No person in this firm's employment has the authority to make or give any representation or warranty in respect of the property.