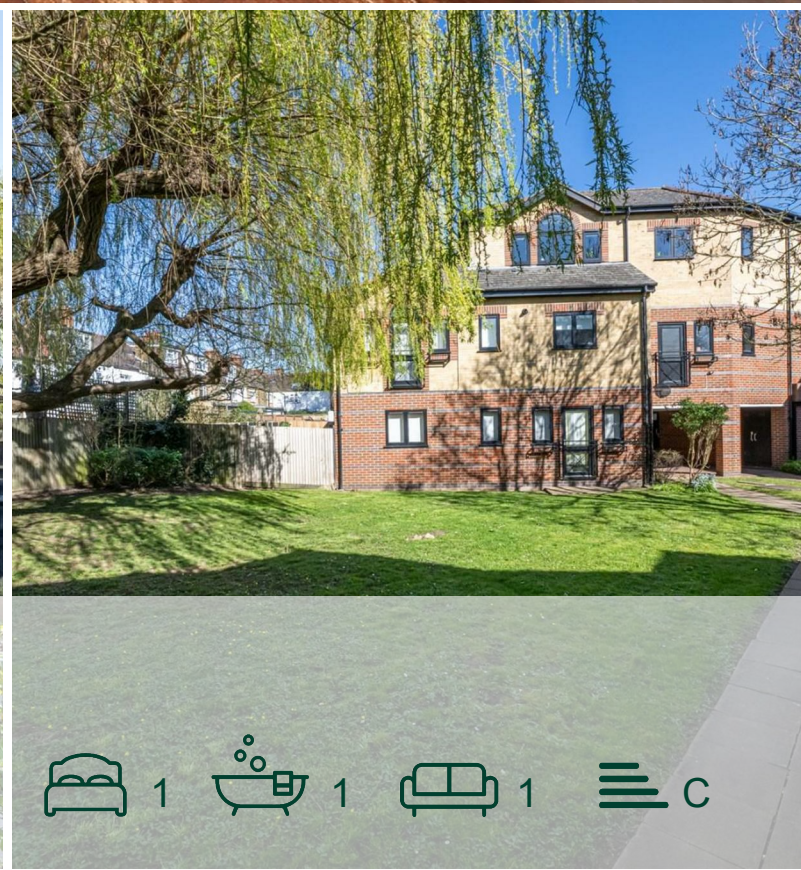


Blake Close, North  
Kensington, W10

Guide Price £325,000



# Blake Close, North Kensington, W10

Guide Price £325,000



## Summary Description

Blake close is a modern development quietly tucked away just off Balby Road. Here you'll find a well planned one-bedroom ground floor flat with a generous Westerly aspect patio garden and an allocated off-street parking space.

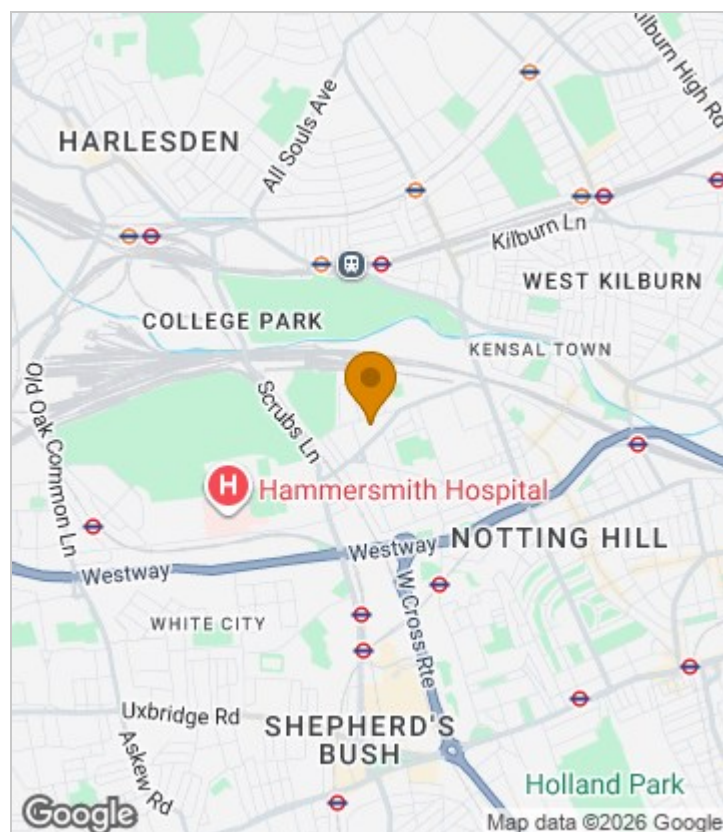
The spacious reception room offers good entertaining space, the kitchen and bathroom are well organised but offer a great opportunity for an incoming purchaser to add value and their own style to the property.

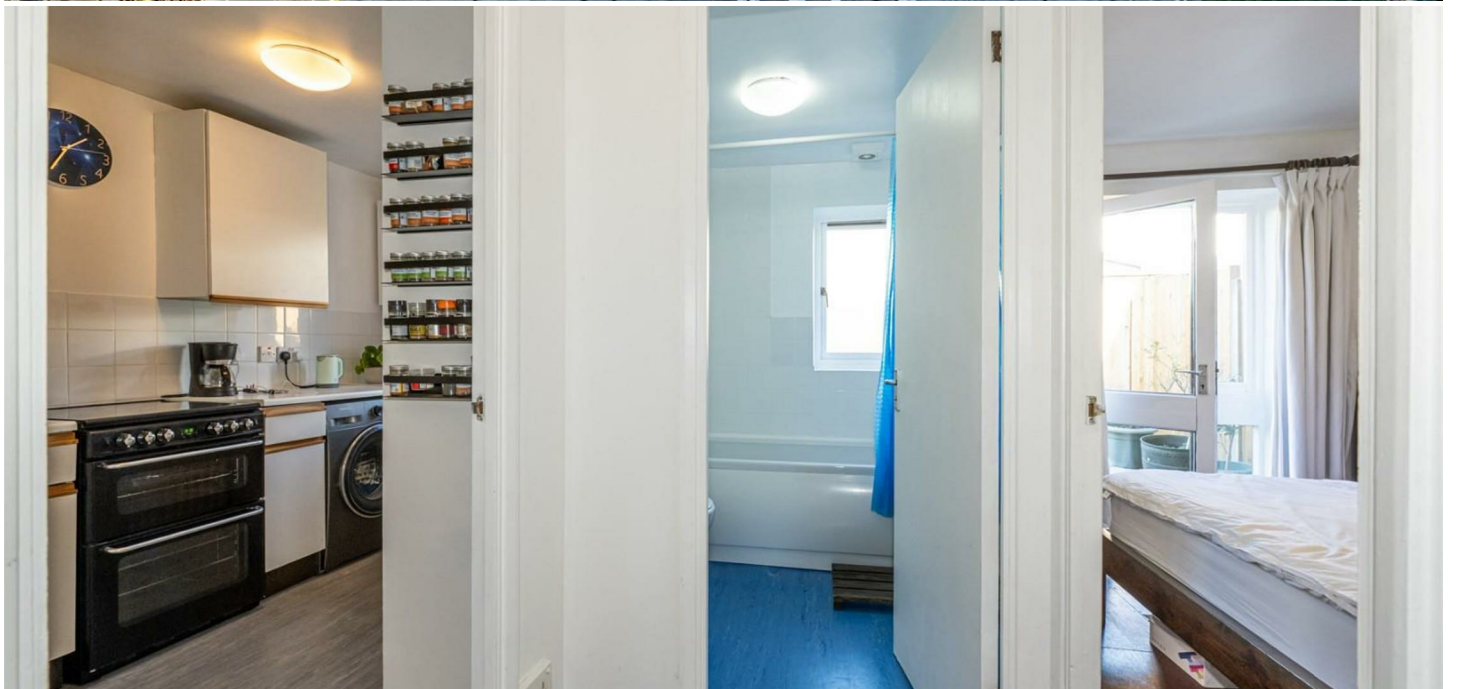
Certainly a highlight is the generous Westerly aspect patio garden which represents an easy maintenance and attractive space to step out and enjoy.

With easy access to Latimer Road and White City stations and various bus routes offering you straightforward links into central London and the vibrancy of North Kensington and Notting Hill on your doorstep this would be an ideal base for any incoming purchaser.

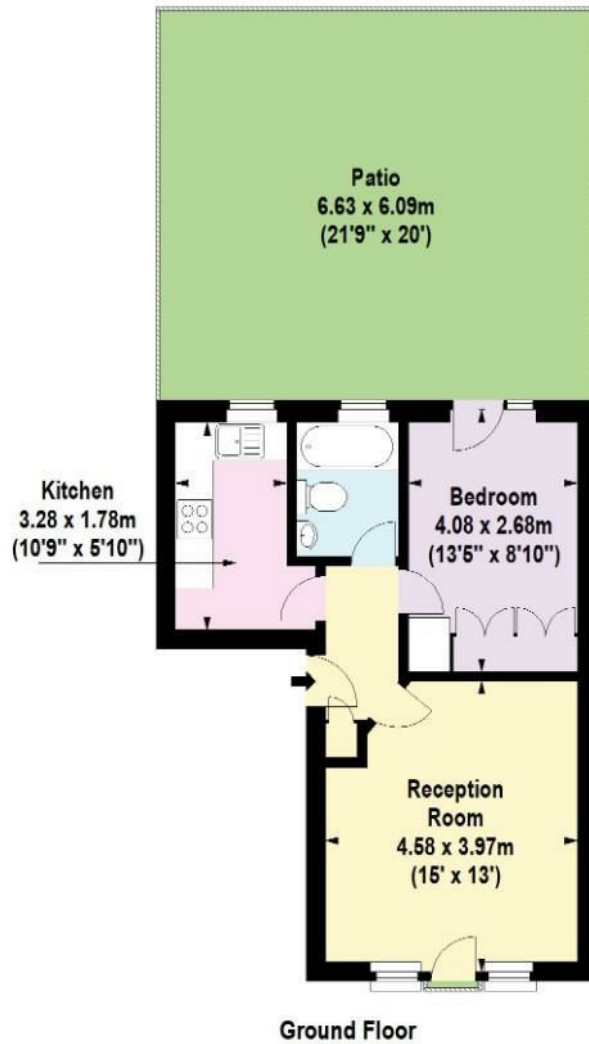
The property is offered for sale chain free, with a 155 year lease and a service charge of £195 per month it is also possible to apply for an RBKC parking permit for boroughwide parking and there is onsite secure cycle storage available.. Early viewings are highly recommended.

## Area Map





# Floor Plan



For Identification Purposes Only. Not To Scale. © www.totalvista.uk 2026

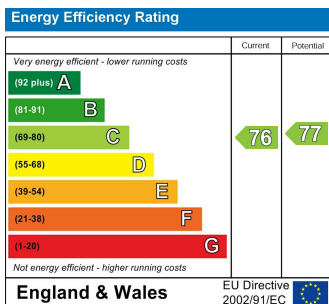


**Blake House, W10**

Approx. Gross Internal Area  
41.71 Sq M - 449 Sq Ft



## Energy Efficiency Graph



## Viewing

Please contact our Sales QP Office on 0207 604 4040 if you wish to arrange a viewing appointment for this property or require further information.

For further information contact:

Sales QP, 2a Brondesbury Road, London, NW6 6AS

Tel: 0207 604 4040 Email: [info@jorgensenturner.com](mailto:info@jorgensenturner.com) <https://www.jorgensenturner.com/>

## Disclaimer

These particulars, whilst believed to be accurate are set out as a general outline only for guidance and do not constitute any part of an offer or contract. Intending purchasers should not rely on them as statements of representation of fact, but must satisfy themselves by inspection or otherwise as to their accuracy. No person in this firm's employment has the authority to make or give any representation or warranty in respect of the property.