



Ashmore Road, Queens
Park, W9

£450,000



Ashmore Road, Queens Park, W9

£450,000



Summary Description

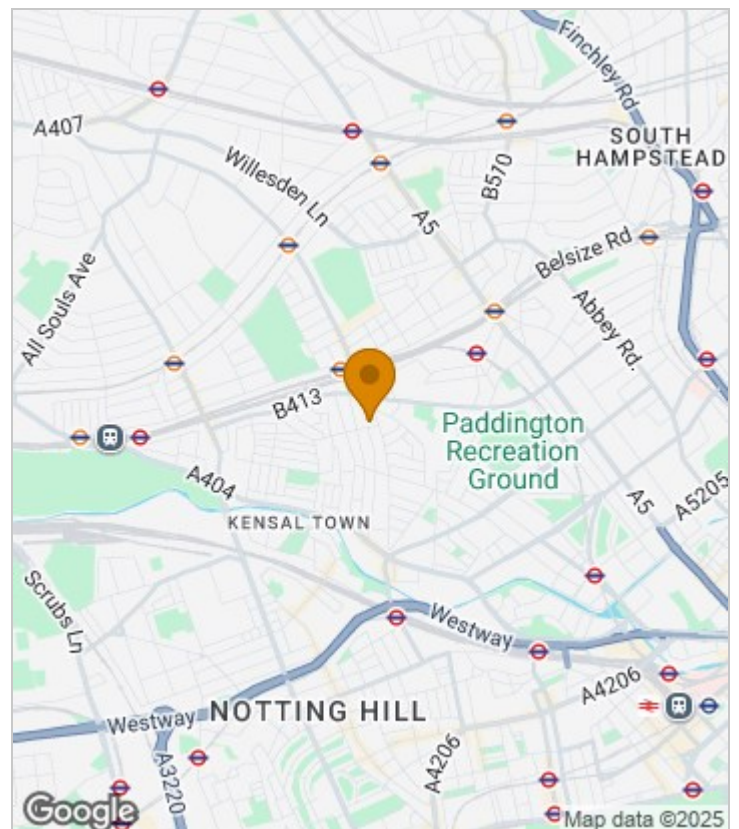
Nestled on this charming residential road in London, this exquisite one-bedroom first-floor conversion flat offers a delightful blend of Victorian elegance and modern sophistication. With its high ceilings and an abundance of natural light, the property creates a warm and inviting atmosphere.

The flat has been immaculately presented and stylishly modernised throughout, ensuring that it meets the needs of contemporary living while retaining its classic character. The spacious reception room provides a perfect space for relaxation or entertaining guests, while the well-appointed bedroom offers a peaceful retreat.

Situated on a lovely residential no-through road, this property enjoys a tranquil setting, yet remains conveniently close to the vibrant amenities of Queens Park and Maida Vale. Residents will appreciate the ease of access to local shops, cafes, and parks, making it an ideal location for those seeking both comfort and convenience.

This charming flat is perfect for first-time buyers or those looking for a great investment property, offering a unique opportunity to own a piece of Victorian architecture in one of London's most sought-after areas. Don't miss the chance to make this stylish flat your new home.

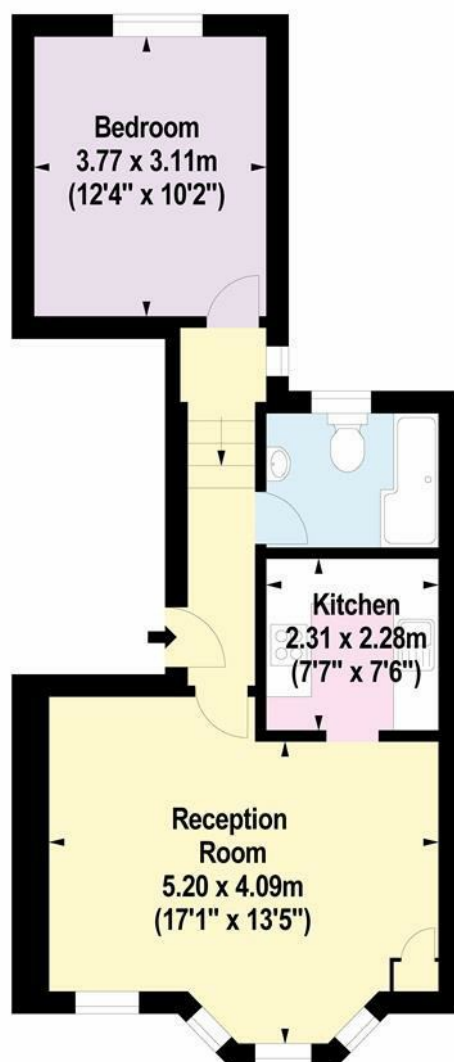
Area Map





Floor Plan

jt JORGENSENTURNER



First Floor

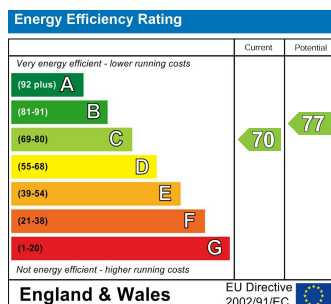
For Identification Purposes Only. Not To Scale. © www.totalvista.uk 2025

Ashmore Road, W9

Approx. Gross Internal Area
47.66 Sq M - 513 Sq Ft

TOTALVISTA

Energy Efficiency Graph



Viewing

Please contact our Sales QP Office on 0207 604 4040 if you wish to arrange a viewing appointment for this property or require further information.

- Gorgeous one bedroom ■ Set on the first floor of this attractive Victorian property
- Offered to the market chain free ■ Lovely modern kitchen and and with a share of freehold ■ stylish bathroom
- Cul-de-sac location close to ■ Ideal First Time Buyer flat transport

For further information contact:

Sales QP, 2a Brondesbury Road, London, NW6 6AS

Tel: 0207 604 4040 Email: info@jorgensenturner.com <https://www.jorgensenturner.com/>

Disclaimer

These particulars, whilst believed to be accurate are set out as a general outline only for guidance and do not constitute any part of an offer or contract. Intending purchasers should not rely on them as statements of representation of fact, but must satisfy themselves by inspection or otherwise as to their accuracy. No person in this firm's employment has the authority to make or give any representation or warranty in respect of the property.

