




jt | JORGENSENTURNER



Kingsgate Road, London,
NW6

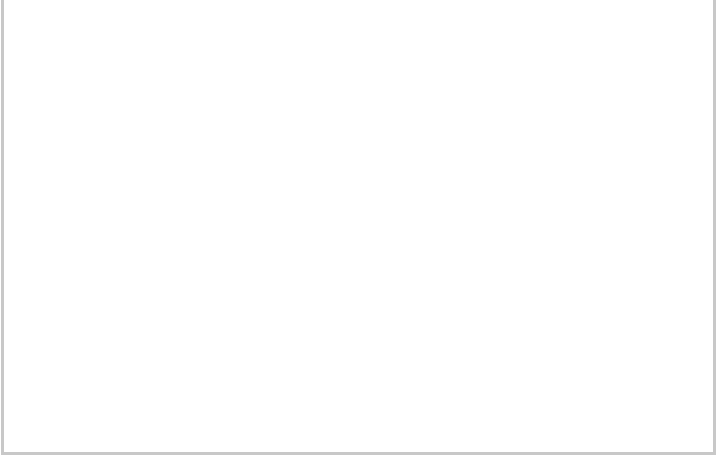
Asking Price £300,000



jt |  1  1  1  D jt

Kingsgate Road, London, NW6

Asking Price £300,000



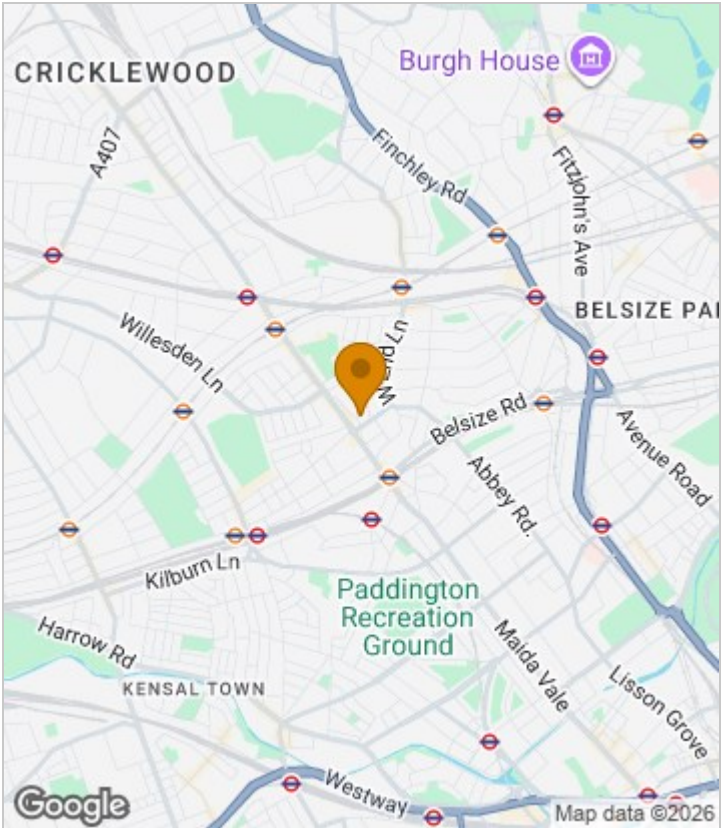
Summary Description

Nestled on the ground floor of a charming period conversion on Kingsgate Road, this delightful one-bedroom flat presents an excellent opportunity for first-time buyers or savvy investors. The property boasts a bright and spacious west-facing living room, where natural light floods in during the afternoon, creating a warm and inviting atmosphere. The open-plan kitchen is designed for both functionality and social interaction, making daily living a breeze.

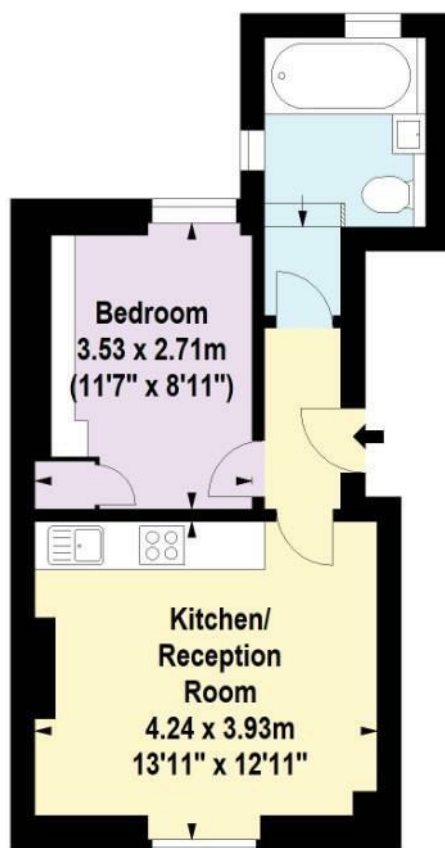
At the rear of the flat, you will find a fully soundproofed bedroom, providing a serene sanctuary perfect for restful nights or focused work-from-home days. The standout feature of this property is undoubtedly the architect-designed bathroom, which showcases bespoke elements, bold lines, and a unique appeal that sets it apart from typical one-bedroom flats.

Situated at the quieter end of Kingsgate Road, this location offers the best of both worlds—tranquillity and convenience. You are just a stone's throw away from the vibrant areas of Kilburn and West Hampstead, where you can enjoy fast transport links via the Jubilee Line, Thameslink, and Overground services. Additionally, local cafés, shops, and essential amenities are all within easy reach, making this flat a stylish and practical choice in one of North West London's most well-connected neighbourhoods. This property is not just a home; it is a lifestyle waiting to be embraced.

Area Map



Floor Plan



Ground Floor

For Identification Purposes Only. Not To Scale. © www.totalvista.uk 2025

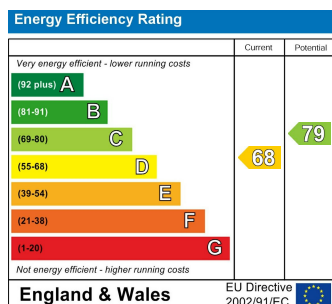


Kingsgate Road, NW6

Approx. Gross Internal Area
33.72 Sq M - 363 Sq Ft



Energy Efficiency Graph



Viewing

Please contact our Sales QP Office on 0207 604 4040 if you wish to arrange a viewing appointment for this property or require further information.

- Bright west-facing living space
- Fully soundproofed bedroom
- A short stroll to local amenities
- Architect-designed bathroom
- Walking distance to Jubilee and London Overground lines
- Chain free

For further information contact:

Sales QP, 2a Brondesbury Road, London, NW6 6AS

Tel: 0207 604 4040 Email: info@jorgensenturner.com <https://www.jorgensenturner.com/>

Disclaimer

These particulars, whilst believed to be accurate are set out as a general outline only for guidance and do not constitute any part of an offer or contract. Intending purchasers should not rely on them as statements of representation of fact, but must satisfy themselves by inspection or otherwise as to their accuracy. No person in this firm's employment has the authority to make or give any representation or warranty in respect of the property.