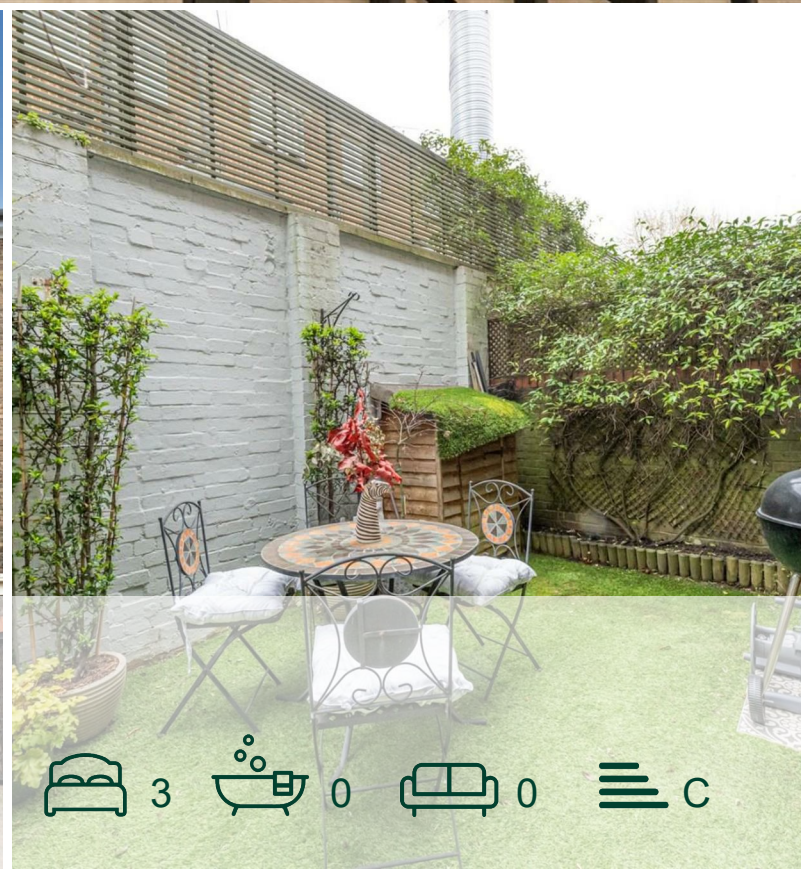




Maple Mews Maida Vale,  
NW6

£975,000



3 0 0 C

# Maple Mews Maida Vale, NW6

£975,000



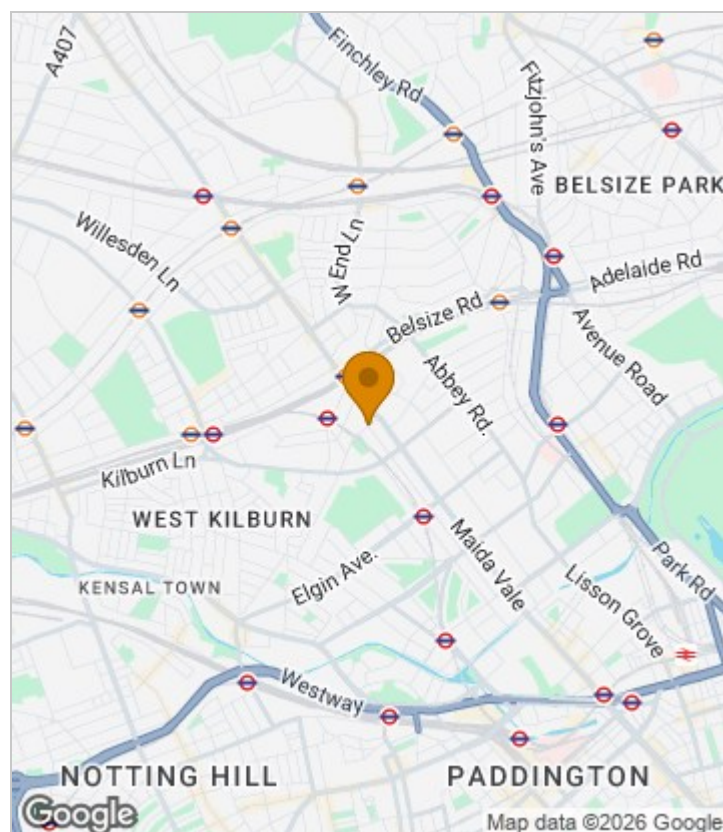
## Summary Description

An exceptionally well presented family home nestled away within this attracted gated community. This lovely home is arranged over three floors offering spacious and well balanced accommodation.

On entering the house you are greeted by an unusually generous hallway leading to a ground floor bedroom with access to a lovely walled rear garden, and a guest bathroom. Rising to the first floor there is a bright and spacious living space with herringbone floor which is semi open-plan to a well organised and beautiful fitted kitchen. Onto the second floor you will find a lovely master suite, further bedroom and bathroom.

The house is ideally located for the varied facilities and transport links of Maida Vale and the green open space of Paddington Rec.

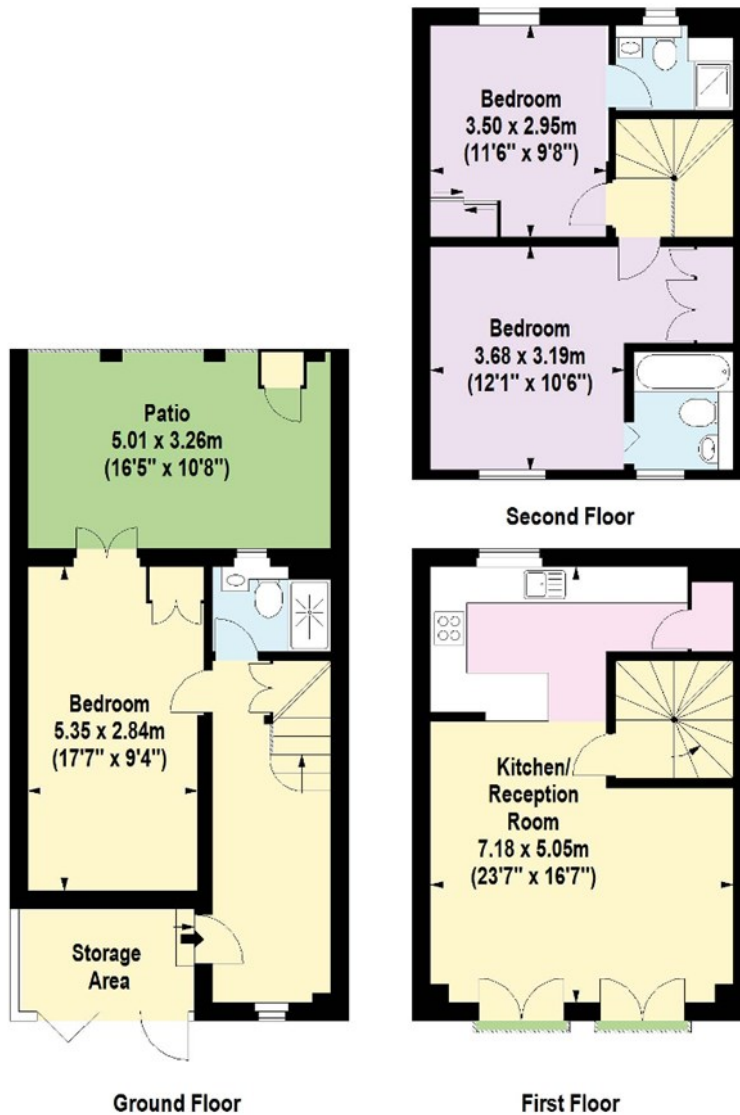
## Area Map





# Floor Plan

jorgensenturner  
estate agents



For Identification Purposes Only. Not To Scale. © www.totalvista.uk 2019

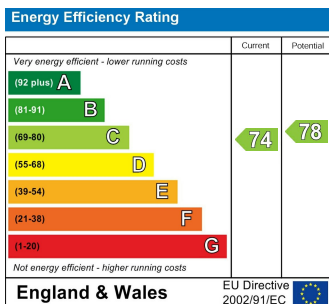


Maple Mews, NW6

Approx. Gross Internal Area  
103.30 Sq M - 1112 Sq Ft

TOTALVISTA

## Energy Efficiency Graph



## Viewing

Please contact our Sales QP Office on 0207 604 4040 if you wish to arrange a viewing appointment for this property or require further information.

- Freehold house in gated
- Ensuite to Two bedrooms development
- Less than 10 min walk to Maida
- Little Venice & Paddington Rec Vale
- Private Garden
- Immaculate throughout
- Over 1100 square foot/103
- Gated off street Parking square metres

For further information contact:

Sales QP, 2a Brondesbury Road, London, NW6 6AS

Tel: 0207 604 4040 Email: [info@jorgensenturner.com](mailto:info@jorgensenturner.com) <https://www.jorgensenturner.com/>

## Disclaimer

These particulars, whilst believed to be accurate are set out as a general outline only for guidance and do not constitute any part of an offer or contract. Intending purchasers should not rely on them as statements of representation of fact, but must satisfy themselves by inspection or otherwise as to their accuracy. No person in this firms employment has the authority to make or give any representation or warranty in respect of the property.