



Rowlands Close, Mill Hill, NW7

 2 Bedrooms  1 Bathroom  1 Reception

OIEO £505,000



Adam Hayes - Finchley Central Office - Sales 348 Regents Park Road, Finchley Central, London, N3 2LJ
Tel: 0208 189 6333 Email: info@adam-hayes.co.uk Web: www.adam-hayes.co.uk

Rowlands Close, Mill Hill, NW7

OIEO £505,000

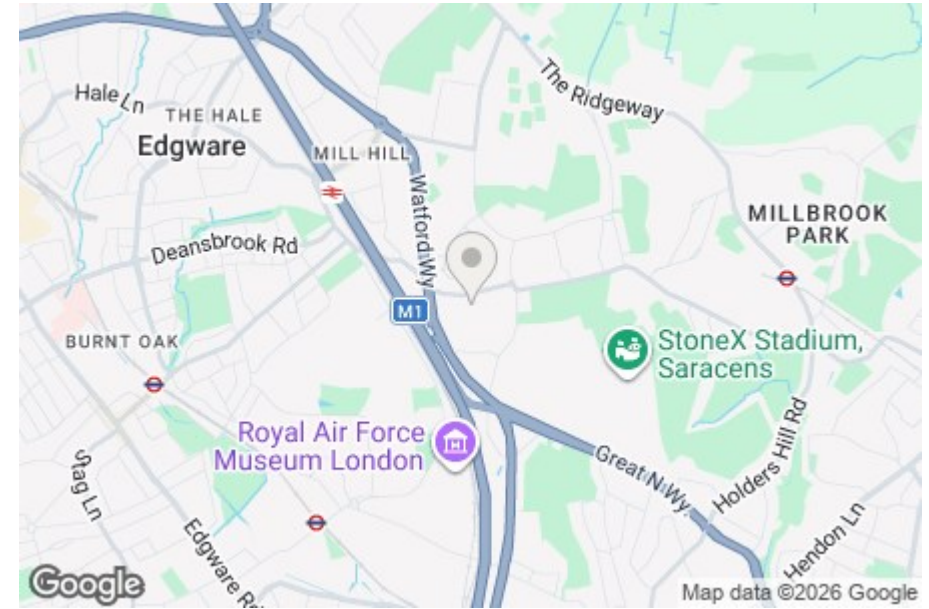
 2 Bedrooms  1 Bathrooms  1 Receptions

Key Features

- Two Bedrooms
- Modern Kitchen
- Cul-de-sac
- Chain Free
- Garden
- Garage

Other Information

Tenure: Freehold
Council Tax Band: D

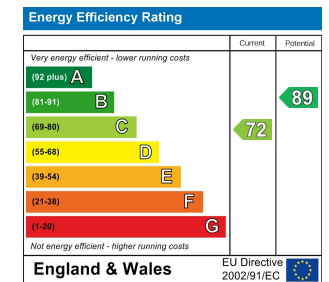


Nearest Stations

Mill Hill Broadway Station	0.5 miles
Colindale Station	1.0 miles
Mill Hill East Station	1.2 miles

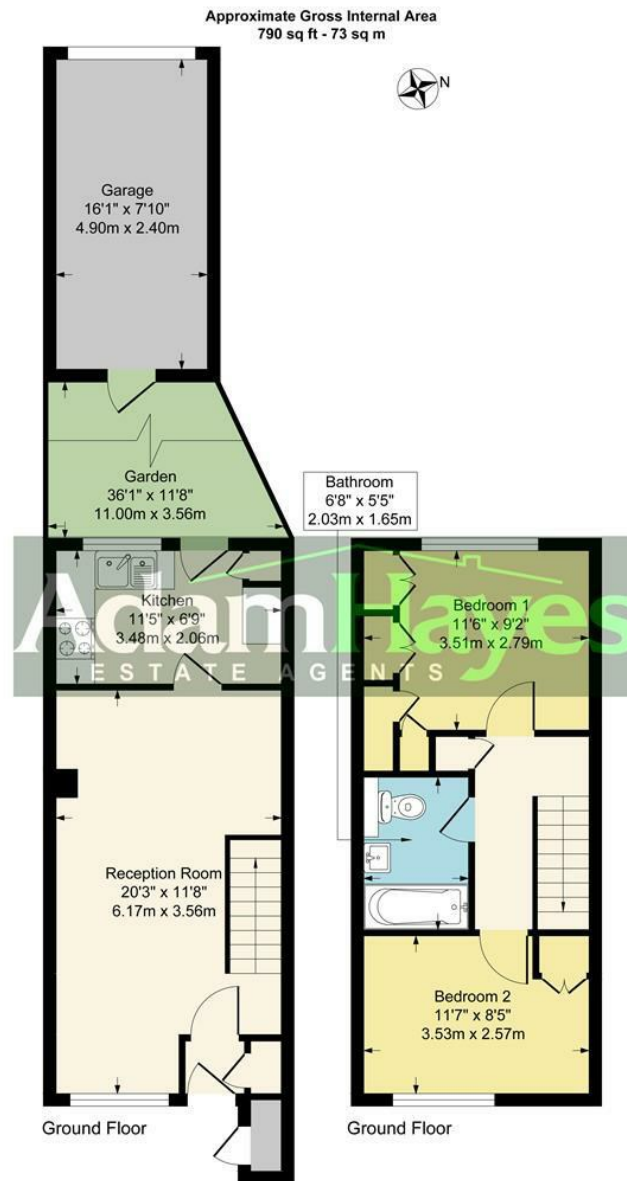
Property Description

A well presented two double bedroom terraced house situated within this popular cul-de-sac off Bunns Lane and within easy reach of Mill Hill Broadway's train station and local shops. The property benefits from a 20ft reception room with bespoke fitted storage, a modern kitchen with direct access to a private west facing garden, and a contemporary bathroom. Further features include fitted cupboards to both bedrooms, one off street parking space and a garage. Offered for sale on a chain free basis, this property would make an ideal first time purchase or rental investment. To really appreciate the size, location and condition, an internal viewing is highly recommended via vendors sole agents Adam Hayes Estate Agents.



Adam Hayes - Finchley Central Office - Sales 348 Regents Park Road, Finchley Central, London, N3 2LJ

Tel: 0208 189 6333 Email: info@adam-hayes.co.uk Web: www.adam-hayes.co.uk



Although every attempt has been made to ensure accuracy, all measurements are approximate.
This floorplan is for illustrative purposes only and not to scale.
Measured in accordance with RICS Standards.

These particulars, whilst believed to be accurate, are set out as a general outline only for guidance and do not constitute any part of an offer or contract. Intending purchasers or prospective tenants should not rely on them as statements or representation of fact, but must satisfy themselves by inspection or otherwise as to their accuracy. We have not carried out a detailed survey, not tested the services, appliances and specific fittings. Room sizes should not be relied upon for carpets and furnishings. The measurements given are approximate. No person in this firm's employment has the authority to make or give any representation or warranty in respect of the property.