



East End Road, Finchley, N3

£1,295,000

 7 Bedrooms  2 Bathrooms  4 Receptions



Adam Hayes - Finchley Central Office - Sales 348 Regents Park Road, Finchley Central, London, N3 2LJ
Tel: 0208 189 6333 Email: info@adam-hayes.co.uk Web: www.adam-hayes.co.uk

East End Road, Finchley, N3

£1,295,000

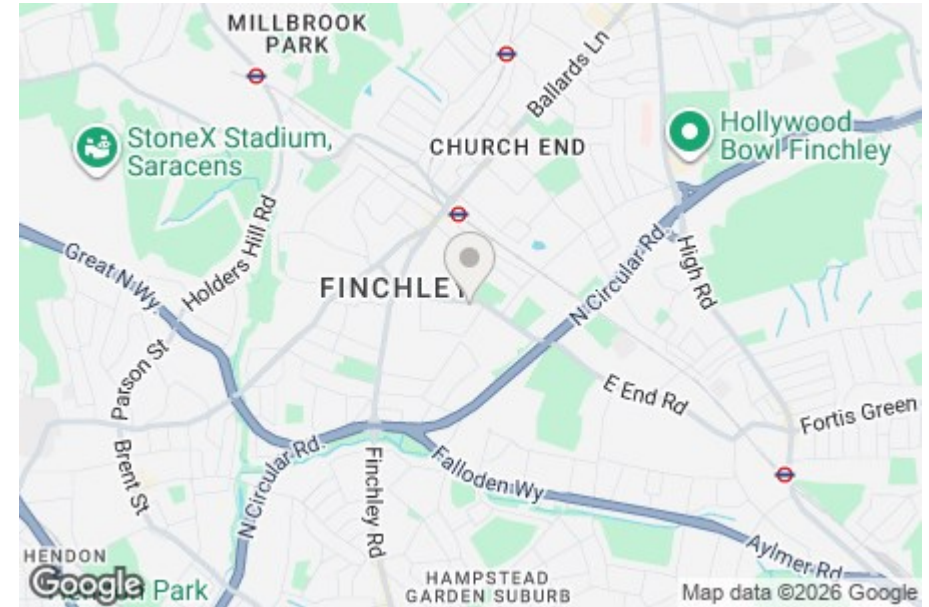
 7 Bedrooms  2 Bathrooms  4 Receptions

Key Features

- Seven Bedrooms
- Four Reception Rooms
- Double Fronted Semi-Detached House
- Arranged Over Three Floors
- Off Street Parking
- Catchment of Akiva School

Other Information

Tenure: Freehold
Council Tax Band: G



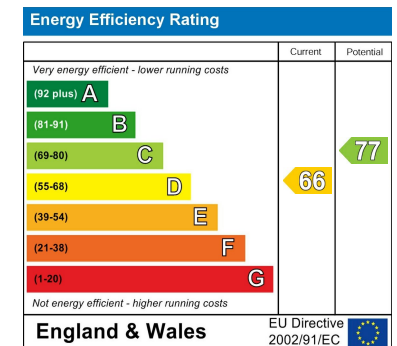
Nearest Stations

- Finchley Central Station 0.5 miles
- West Finchley Station 1.1 miles
- Mill Hill East Station 1.3 miles

Property Description

Set back off East End Road is this deceptively spacious double fronted seven-bedroom, two-bathroom semi-detached family home extending to approximately 2,725 sq ft. With side and front access, the property offers both generous and versatile accommodation, making it an ideal purchase for large families, developers or buyers seeking a property with excellent potential for reconfiguration (STPP). The ground floor comprises multiple reception rooms, a spacious kitchen/dining room, utility room and study, while the upper floors provide seven well-proportioned bedrooms and two bathrooms.

Further benefits include off street parking, generous living accommodation throughout and excellent scope to modernise or extend further, subject to the necessary planning consents. Ideally located within the catchment area for a number of highly regarded schools, including Akiva Primary School, and conveniently positioned close to local shops, transport links and amenities. To really appreciate the size, flexibility and potential, an internal viewing is highly recommended via vendors sole agents Adam Hayes Estate Agents.



Adam Hayes - Finchley Central Office - Sales 348 Regents Park Road, Finchley Central, London, N3 2LJ

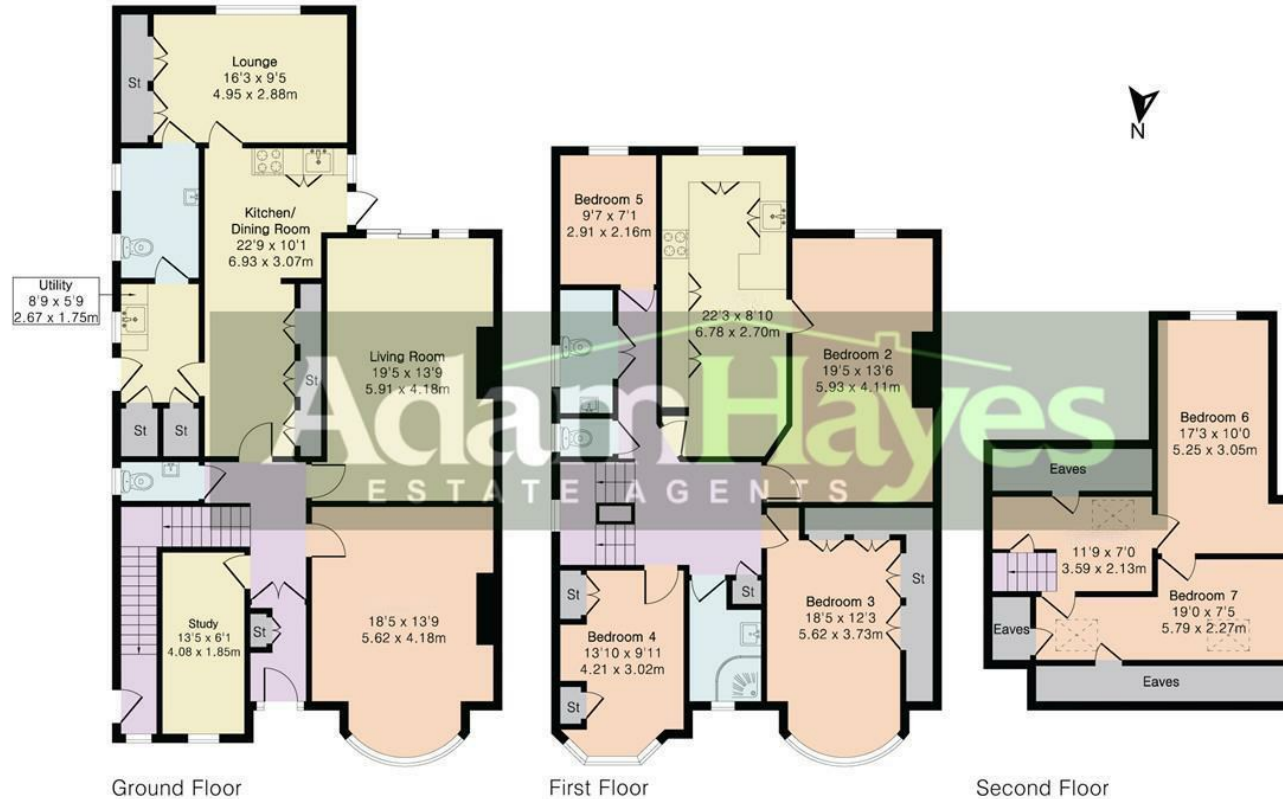
Tel: 0208 189 6333 Email: info@adam-hayes.co.uk Web: www.adam-hayes.co.uk

Approximate Gross Internal Area 2725 sq ft - 253 sq m

Ground Floor Area 1266 sq ft – 118 sq m

First Floor Area 1102 sq ft – 102 sq m

Second Floor Area 357 sq ft – 33 sq m



Floor plan produced in accordance with RICS Property Measurement 2nd Edition. Although Pink Plan Ltd ensures the highest level of accuracy, measurements of doors, windows and rooms are approximate and no responsibility is taken for error, omission or misstatement. These plans are for representation purposes only and no guarantee is given on the total square footage of the property within this plan. The figure icon is for initial guidance only and should not be relied on as a basis of valuation.

These particulars, whilst believed to be accurate, are set out as a general outline only for guidance and do not constitute any part of an offer or contract. Intending purchasers or prospective tenants should not rely on them as statements or representation of fact, but must satisfy themselves by inspection or otherwise as to their accuracy. We have not carried out a detailed survey, not tested the services, appliances and specific fittings. Room sizes should not be relied upon for carpets and furnishings. The measurements given are approximate. No person in this firm's employment has the authority to make or give any representation or warranty in respect of the property.