



East End Road, Finchley Central, N3

 2 Bedrooms  1 Bathroom  1 Reception

OIEO £400,000



Adam Hayes - Finchley Central Office - Sales 348 Regents Park Road, Finchley Central, London, N3 2LJ  
Tel: 0208 189 6333 Email: [info@adam-hayes.co.uk](mailto:info@adam-hayes.co.uk) Web: [www.adam-hayes.co.uk](http://www.adam-hayes.co.uk)

# East End Road, Finchley Central, N3

## OIEO £400,000

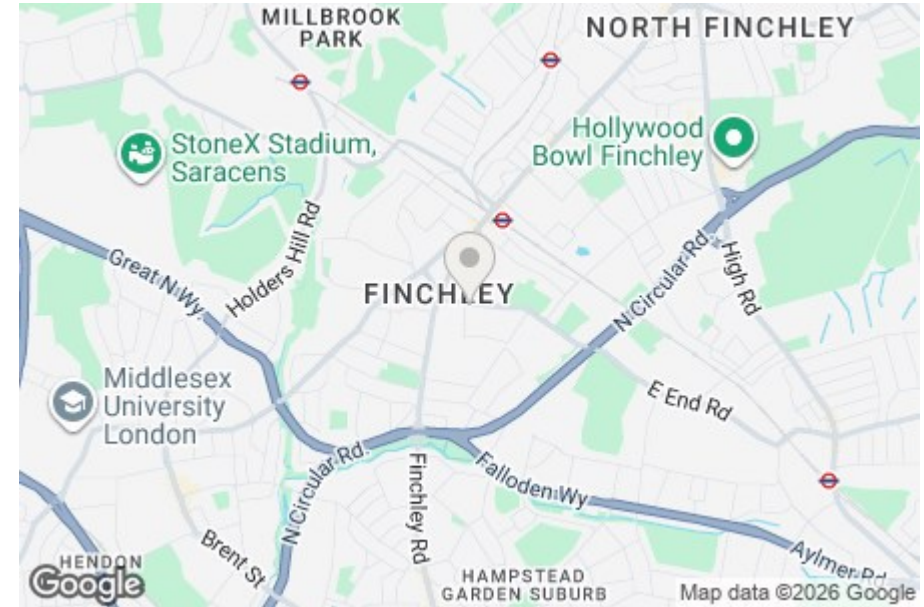
 2 Bedrooms  1 Bathrooms  1 Receptions

### Key Features

- Two Bedrooms
- First Floor Apartment
- Modern Kitchen
- Contemporary Bathroom
- Communal Gardens
- Residents Parking

### Other Information

Tenure: Leasehold  
Length of Lease: 186 Years  
Ground Rent: Nil  
Service Charge: £1,200.00 P/A  
Council Tax Band: D

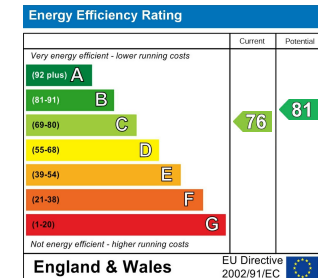


### Nearest Stations

Finchley Central Station 0.4 miles  
West Finchley Station 1.0 miles  
Mill Hill East Station 0.9 miles

### Property Description

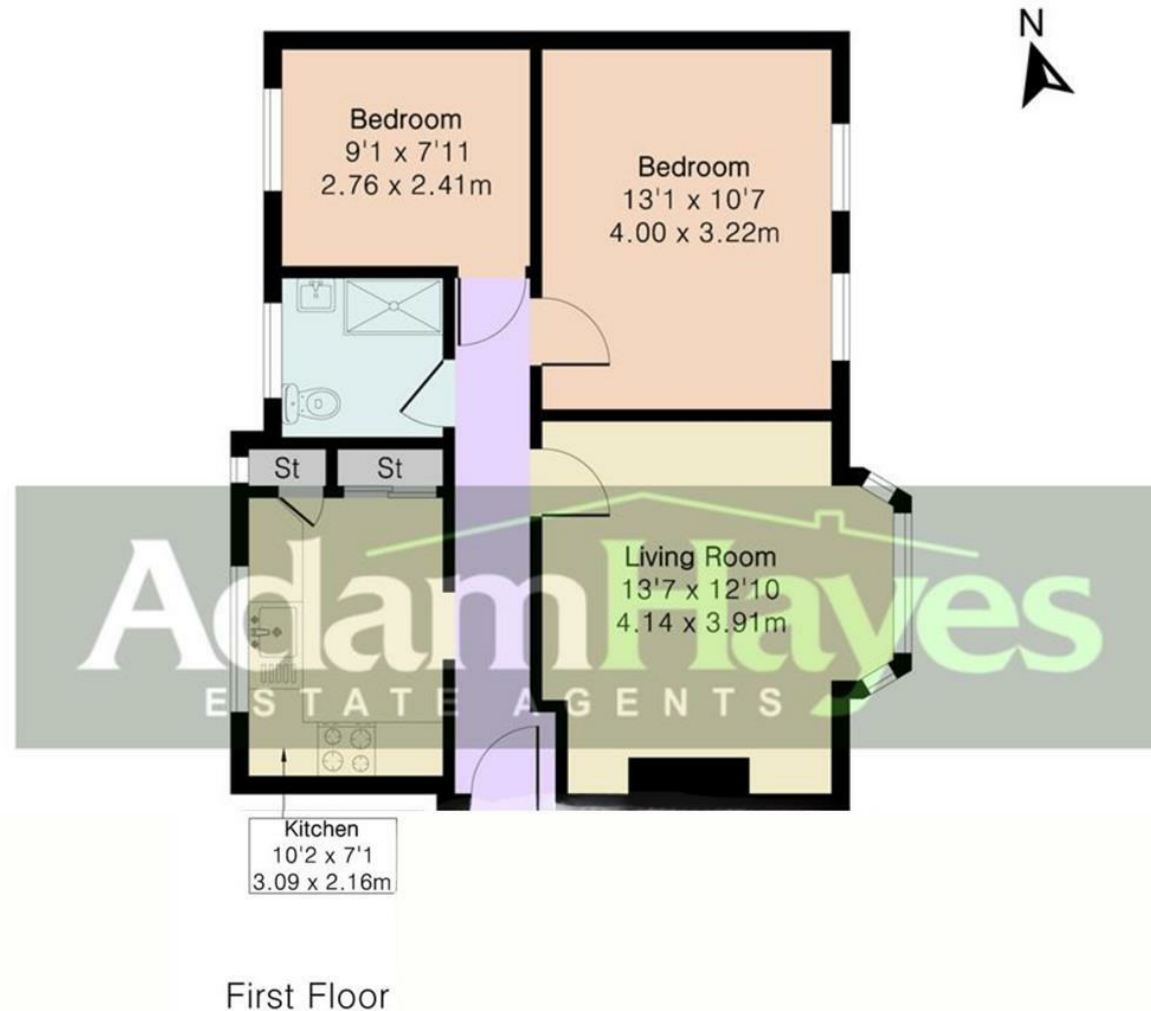
Situated in this popular turning off East End Road and conveniently located in the catchment area for a number of popular schools and Places of Worship is this well presented two bedroom, first floor apartment. The property features a modern, separate kitchen with integrated appliances, herringbone style flooring throughout, and a well-presented three-piece bathroom suite. Additional benefits include residents' parking and access to communal gardens. To really appreciate the size, location and potential an internal viewing is highly recommended via vendors sole agents Adam Hayes Estate Agents.



Adam Hayes - Finchley Central Office - Sales 348 Regents Park Road, Finchley Central, London, N3 2LJ

Tel: 0208 189 6333 Email: info@adam-hayes.co.uk Web: www.adam-hayes.co.uk

**Approximate Gross Internal Area 688 sq ft - 64 sq m**



These particulars, whilst believed to be accurate, are set out as a general outline only for guidance and do not constitute any part of an offer or contract. Intending purchasers or prospective tenants should not rely on them as statements or representation of fact, but must satisfy themselves by inspection or otherwise as to their accuracy. We have not carried out a detailed survey, not tested the services, appliances and specific fittings. Room sizes should not be relied upon for carpets and furnishings. The measurements given are approximate. No person in this firm's employment has the authority to make or give any representation or warranty in respect of the property.