



Long Lane, Finchley Central, N3

 2 Bedrooms  1 Bathroom  2 Receptions

Guide Price £625,000





Adam Hayes - Finchley Central Office - Sales 348 Regents Park Road, Finchley Central, London, N3 2LJ  
Tel: 0208 189 6333 Email: [info@adam-hayes.co.uk](mailto:info@adam-hayes.co.uk) Web: [www.adam-hayes.co.uk](http://www.adam-hayes.co.uk)

# Long Lane, Finchley Central, N3

## Guide Price £625,000

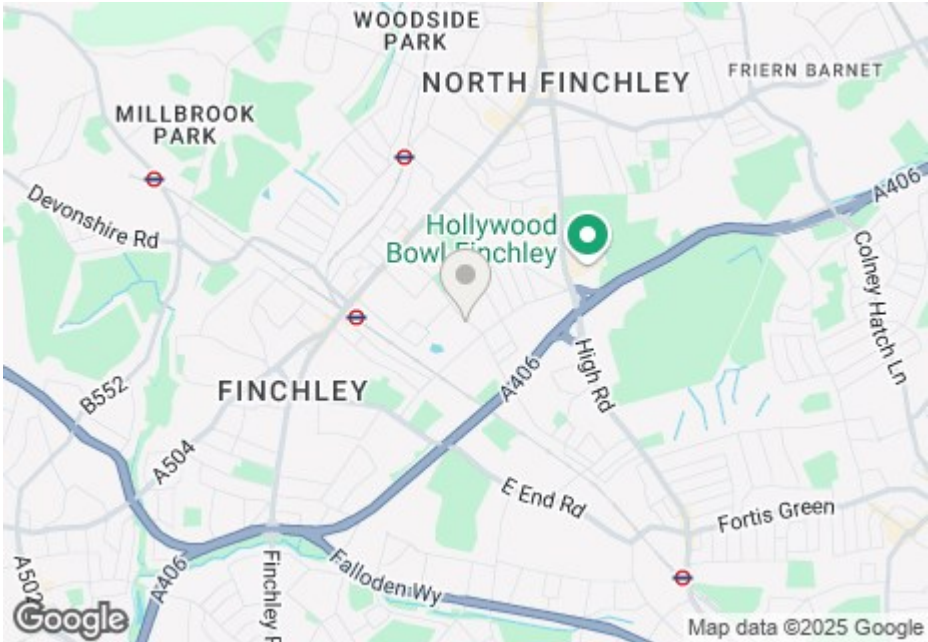
 2 Bedrooms  1 Bathrooms  2 Receptions

### Key Features

- Two Double Bedrooms
- Through Lounge
- Separate Fitted Kitchen
- Off Street Parking
- Mature Rear Garden
- 0.4 Miles of Finchley Central Station

### Other Information

Tenure: Freehold  
Council Tax Band: D

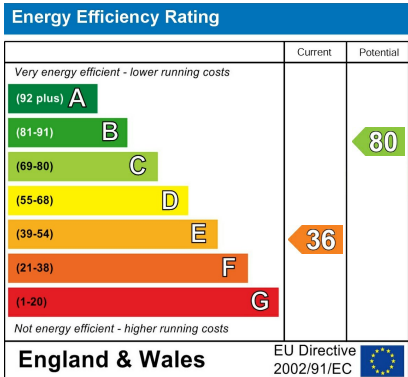


### Nearest Stations

Finchley Central Station	0.4 miles
West Finchley Station	0.6 miles
Woodside Park Station	1.2 miles

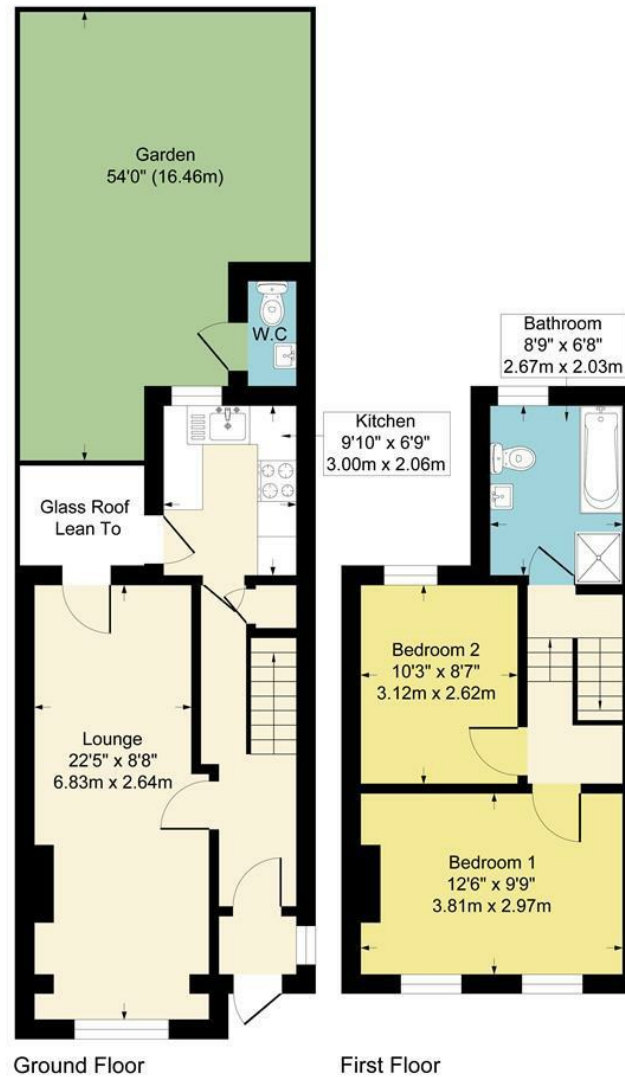
### Property Description

Situated within minutes' walk of Victoria Park and within 0.4 miles of Finchley Central Station (Northern Line) is this two double bedroom terraced family house. The property is offered chain free and benefits from an approx. 22ft through lounge, a separate fitted kitchen, a ground floor wc, two well sized bedrooms and a three-piece family bathroom suite. Other notable features include a fireplace, off street parking, double glazed windows, and a mature rear garden. To fully appreciate the property's condition, size, and location, an internal viewing is highly recommended through the vendor's sole agents, Adam Hayes Estate Agents.



Adam Hayes - Finchley Central Office - Sales 348 Regents Park Road, Finchley Central, London, N3 2LJ  
Tel: 0208 189 6333 Email: info@adam-hayes.co.uk Web: www.adam-hayes.co.uk

**Approximate Gross Internal Area**  
**690 sq ft - 64 sq m**



Although every attempt has been made to ensure accuracy, all measurements are approximate.  
This floorplan is for illustrative purposes only and not to scale.  
Measured in accordance with RICS Standards.

These particulars, whilst believed to be accurate, are set out as a general outline only for guidance and do not constitute any part of an offer or contract. Intending purchasers or prospective tenants should not rely on them as statements or representation of fact, but must satisfy themselves by inspection or otherwise as to their accuracy. We have not carried out a detailed survey, not tested the services, appliances and specific fittings. Room sizes should not be relied upon for carpets and furnishings. The measurements given are approximate. No person in this firm's employment has the authority to make or give any representation or warranty in respect of the property.