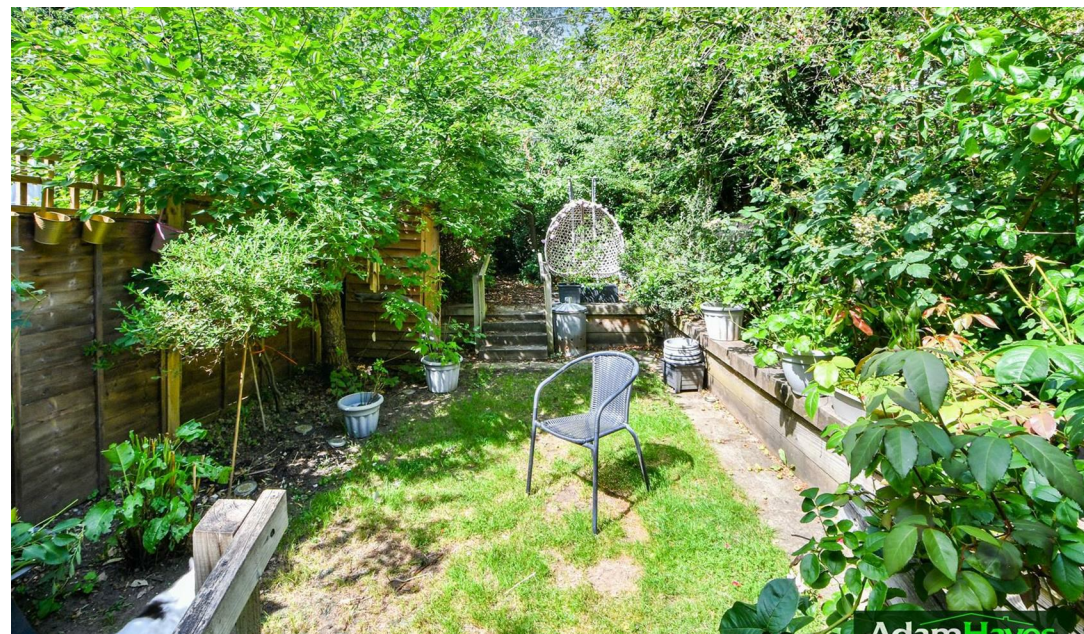




Heath View, East Finchley, N2

 3 Bedrooms  1 Bathroom  1 Reception

£750,000



Adam Hayes - East Finchley Office - Sales 158 High Road, East Finchley, London, N2 9AS
Tel: 0208 883 2621 Email: info@adam-hayes.co.uk Web: www.adam-hayes.co.uk

Heath View, East Finchley, N2

£750,000

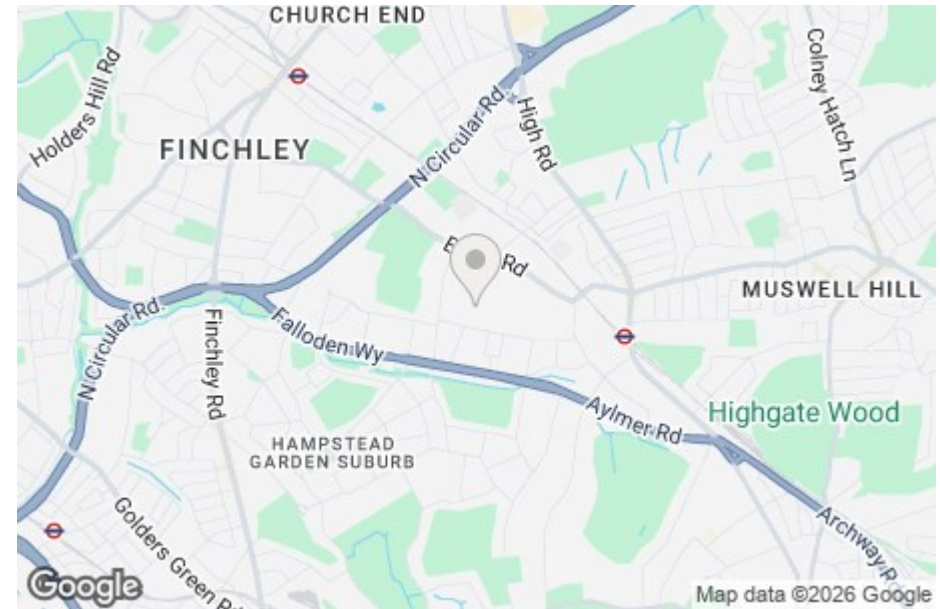
 3 Bedrooms  1 Bathrooms  1 Receptions

Key Features

- Three Bedrooms
- Terraced House
- Chain Free
- Guest Cloakroom
- Mature Rear Garden
- Modern Kitchen

Other Information

Tenure: Freehold
Council Tax Band: E



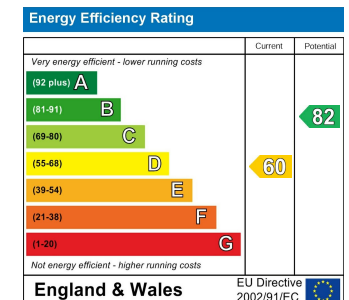
Nearest Stations

East Finchley Station 0.6 miles
Finchley Central Station 1.1 miles
Golders Green Station 1.3 miles

Property Description

Situated in this popular residential turning just off Hampstead Heights is this well presented three bedroom terraced family home. The property is offered chain free and benefits from a bright reception/dining room with attractive parquet flooring and sliding doors leading onto a private rear garden with patio, lawn and mature shrubs. Further advantages include a modern fitted kitchen with integrated appliances, a guest WC, gas central heating and double glazing throughout.

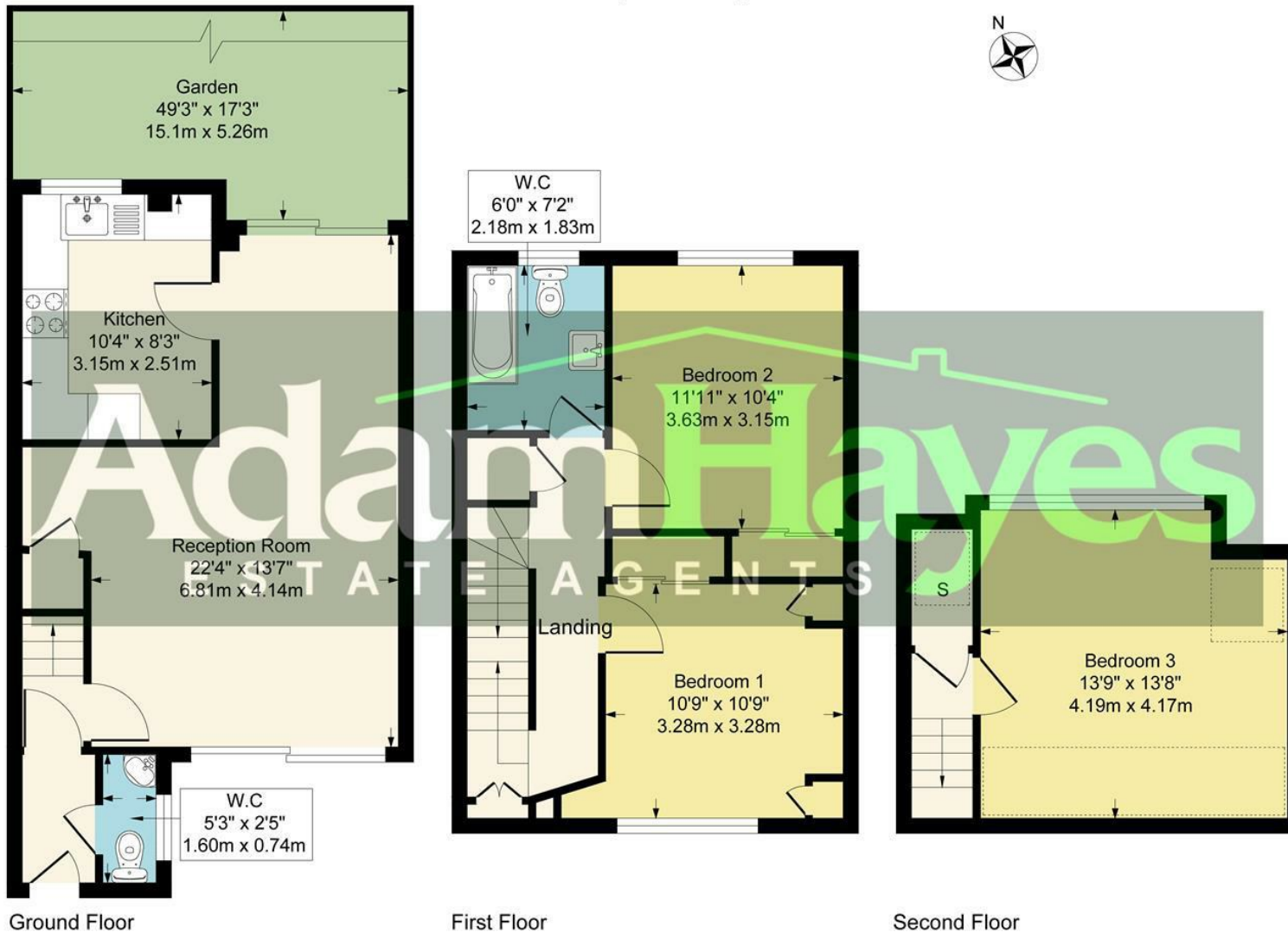
Offering well balanced accommodation, the property comprises three bedrooms, a family bathroom and excellent built-in storage. Conveniently located within the catchment area for Brookland Infant & Junior School and within one mile of The Archer Academy, the property is also within easy reach of local shops, transport links and amenities. To really appreciate the size, location and condition, an internal viewing is highly recommended via vendors sole agents Adam Hayes Estate Agents.



Adam Hayes - East Finchley Office - Sales 158 High Road, East Finchley, London, N2 9AS

Tel: 0208 883 2621 Email: info@adam-hayes.co.uk Web: www.adam-hayes.co.uk

Approximate Gross Internal Area
1086 sq ft - 101 sq m



Although every attempt has been made to ensure accuracy, all measurements are approximate.
This floorplan is for illustrative purposes only and not to scale.
Measured in accordance with RICS Standards.

These particulars, whilst believed to be accurate, are set out as a general outline only for guidance and do not constitute any part of an offer or contract. Intending purchasers or prospective tenants should not rely on them as statements or representation of fact, but must satisfy themselves by inspection or otherwise as to their accuracy. We have not carried out a detailed survey, not tested the services, appliances and specific fittings. Room sizes should not be relied upon for carpets and furnishings. The measurements given are approximate. No person in this firm's employment has the authority to make or give any representation or warranty in respect of the property.