



Adam Hayes - East Finchley Office - Sales 158 High Road, East Finchley, London, N2 9AS

Tel: 0208 883 2621 Email: info@adam-hayes.co.uk Web: www.adam-hayes.co.uk

Blandford Close, Hampstead Garden Suburb, N2

£1,800,000

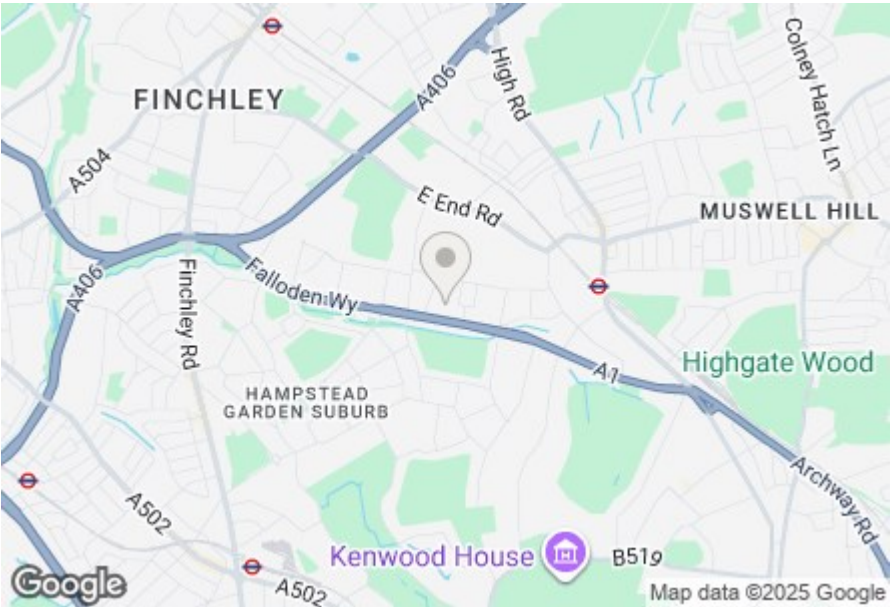
 4 Bedrooms  2 Bathrooms  2 Receptions

Key Features

- Four Bedrooms
- Through Lounge
- Modern Kitchen
- Arranged Across Three Floors
- Mature Rear Garden
- Off Street Parking & Garage

Other Information

Tenure: Freehold
Council Tax Band: G

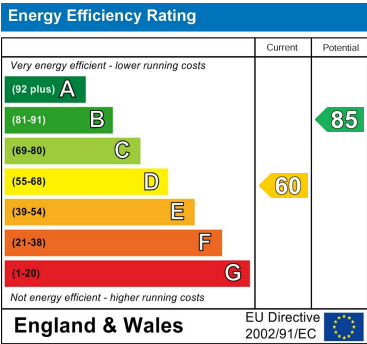


Nearest Stations

| | |
|--------------------------|-----------|
| East Finchley Station | 0.5 miles |
| Finchley Central Station | 1.1 miles |
| Golders Green Station | 1.3 miles |

Property Description

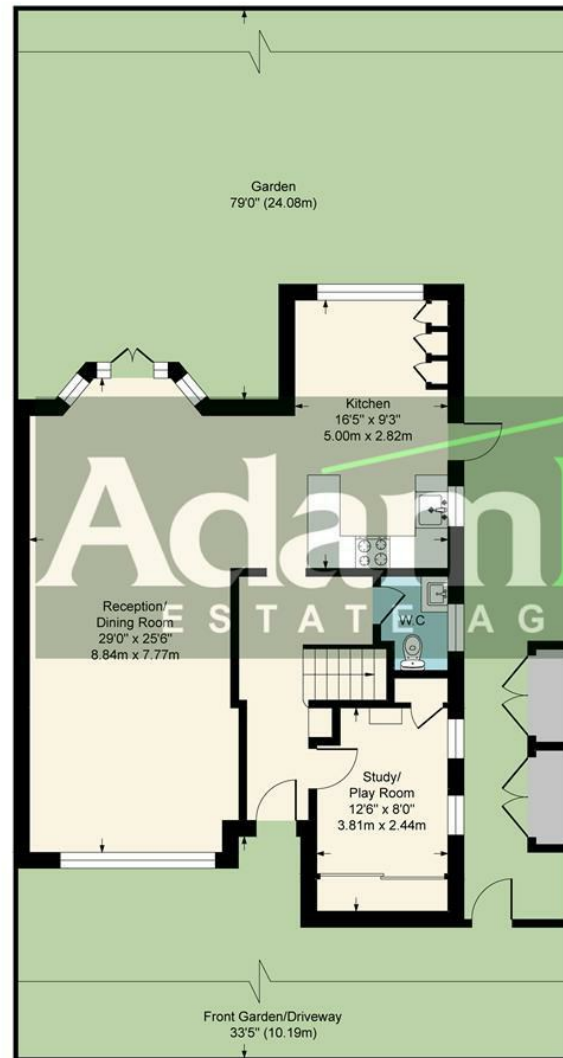
Situated in the highly sought-after Hampstead Garden Suburb is this stunning four-bedroom family house. The property is arranged across three floors and benefits from a through lounge leading to a modern open plan fitted kitchen, a study room, and a mature rear garden with a patio. The first-floor compromises of three well sized bedrooms, a family bathroom and W.C. while the third floor consists of a double bedroom with an en-suite. There is a garage plus two off street parking spaces at the front and the property enjoys proximity to the excellent amenities of Temple Fortune and East Finchley, while Lyttleton Playing Fields provides nearby green space for outdoor leisure. With outstanding schools in the area, this home is ideal for families seeking both convenience and a peaceful lifestyle. A viewing is highly recommended through the vendors sole agents, Adam Hayes Estate Agents



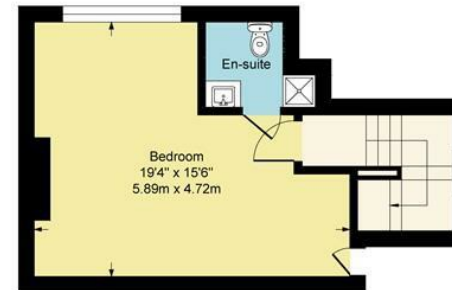
Adam Hayes - East Finchley Office - Sales 158 High Road, East Finchley, London, N2 9AS

Tel: 0208 883 2621 Email: info@adam-hayes.co.uk Web: www.adam-hayes.co.uk

Approximate Gross Internal Area
1830 sq ft - 170 sq m



Ground Floor



First Floor



First Floor

Although every attempt has been made to ensure accuracy, all measurements are approximate.
 This floorplan is for illustrative purposes only and not to scale.
 Measured in accordance with RICS Standards.

These particulars, whilst believed to be accurate, are set out as a general outline only for guidance and do not constitute any part of an offer or contract. Intending purchasers or prospective tenants should not rely on them as statements or representation of fact, but must satisfy themselves by inspection or otherwise as to their accuracy. We have not carried out a detailed survey, not tested the services, appliances and specific fittings. Room sizes should not be relied upon for carpets and furnishings. The measurements given are approximate. No person in this firm's employment has the authority to make or give any representation or warranty in respect of the property.