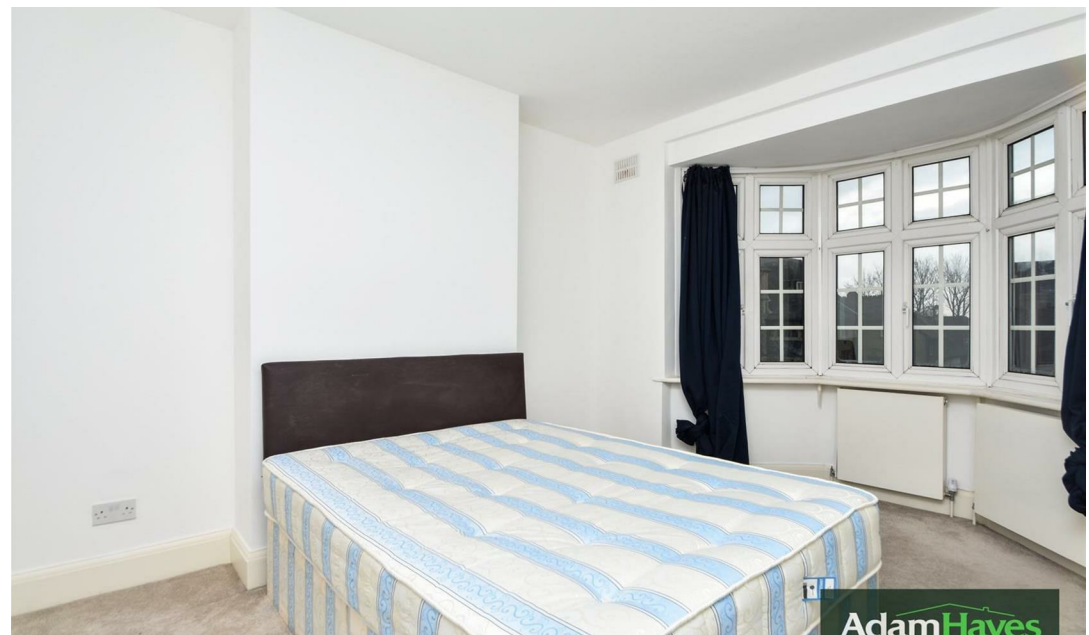
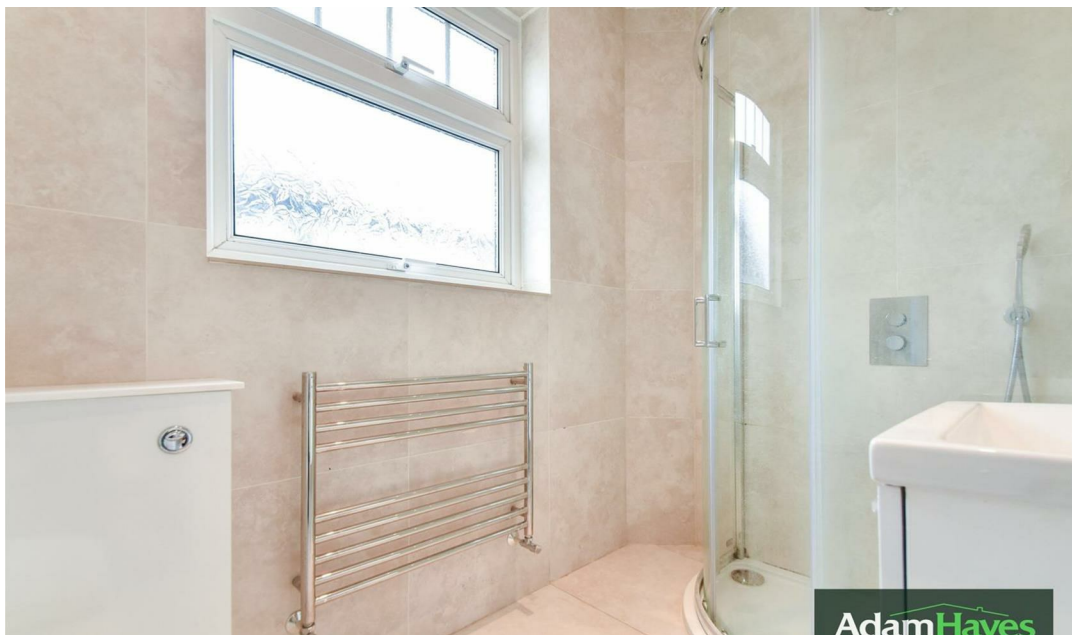




Creighton Avenue, East Finchley, N2

£550,000

 2 Bedrooms  1 Bathroom  1 Reception




Adam Hayes - East Finchley Office - Sales 158 High Road, East Finchley, London, N2 9AS

Tel: 0208 883 2621 Email: info@adam-hayes.co.uk Web: www.adam-hayes.co.uk

Creighton Avenue, East Finchley, N2

£550,000

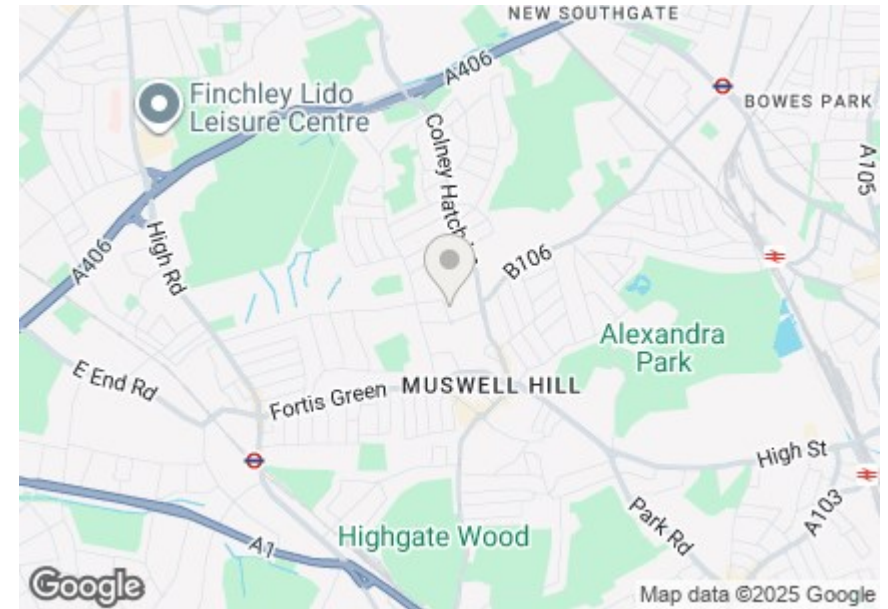
 2 Bedrooms  1 Bathrooms  1 Receptions

Key Features

- First Floor Maisonette
- Two Double Bedrooms
- Approximately 15ft Reception
- Modern Kitchen
- Own section of Garden
- Chain Free

Other Information

Tenure: Leasehold
Length of Lease: 145 Years
Ground Rent: Nil
Service Charge: £1,100.00 P/A
Council Tax Band: D



Nearest Stations

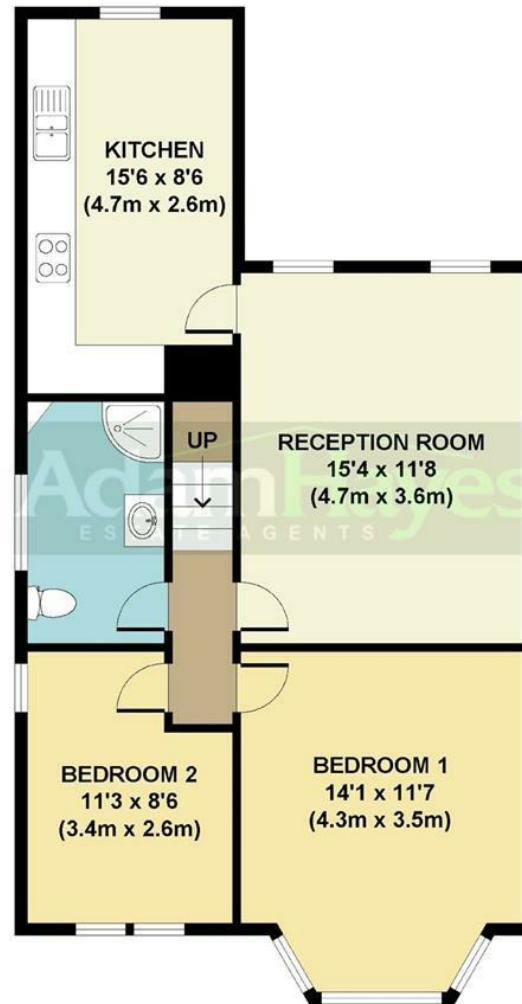
East Finchley Station	0.9 miles
Highgate Station	1.2 miles
Finchley Central Station	2.0 miles

Property Description

Situated on this popular tree lined road and within a short walk to East Finchley Tube Station is this two double bedroom first floor apartment. The property is offered on a chain free basis and benefits from its own section of the garden, an approx. 15ft reception room, a separate modern fitted kitchen, a three piece bathroom suite and gas central heating. The property is set within the catchment for Fortismere School and close to strong primary options like Tetherdown Primary School and Our Lady of Muswell Catholic Primary School. To really appreciate the size, location and condition, an internal viewing is highly recommended through the vendors sole agents, Adam Hayes Estate Agents.

Adam Hayes - East Finchley Office - Sales 158 High Road, East Finchley, London, N2 9AS

Tel: 0208 883 2621 Email: info@adam-hayes.co.uk Web: www.adam-hayes.co.uk



GROSS INTERNAL
FLOOR AREA 661 SQ FT

APPROX. GROSS INTERNAL FLOOR AREA 661 SQ FT / 61 SQ M
Floorplans are for identification and guideline purposes only, not to scale.
Compliant with RICS code of measuring practice.
Floorplans supplied by www.draftingfloorplan.com

These particulars, whilst believed to be accurate, are set out as a general outline only for guidance and do not constitute any part of an offer or contract. Intending purchasers or prospective tenants should not rely on them as statements or representation of fact, but must satisfy themselves by inspection or otherwise as to their accuracy. We have not carried out a detailed survey, not tested the services, appliances and specific fittings. Room sizes should not be relied upon for carpets and furnishings. The measurements given are approximate. No person in this firm's employment has the authority to make or give any representation or warranty in respect of the property.