




Hervey Close, Finchley Central, N3

£2,950 PCM

 3 Bedrooms  1 Bathroom  2 Receptions



Adam Hayes - North Finchley Office - Lettings 365 Ballards Lane, North Finchley, London, N12 8LL
Tel: 020 8445 4008 Email: info@adam-hayes.co.uk Web: www.adam-hayes.co.uk

Hervey Close, Finchley Central, N3

£2,950 PCM

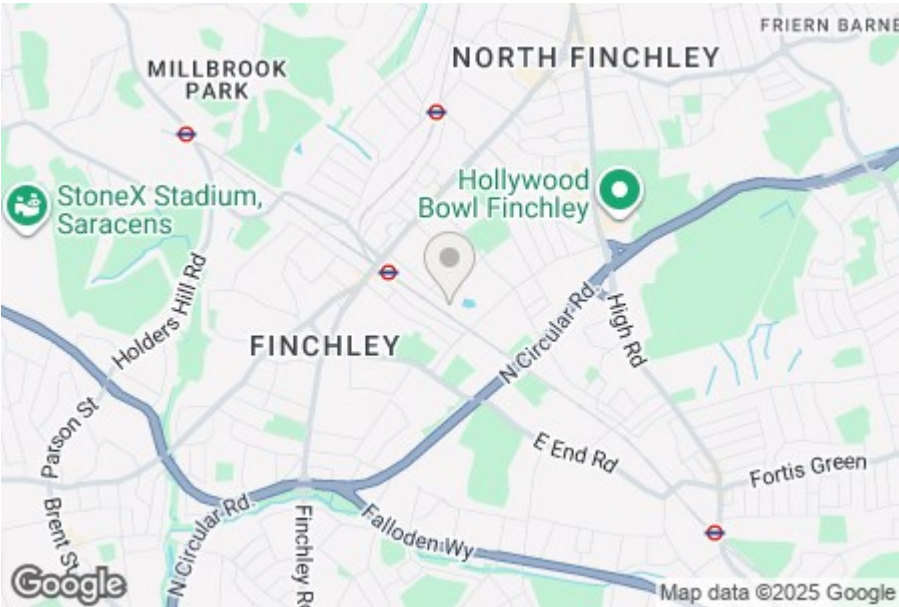
3 Bedrooms 1 Bathrooms 2 Receptions

Key Features

- Spacious Three Bedroom Terraced House
- Two Receptions
- Spacious Garden With Storage/Garage
- Great Location
- Contemporary Interior
- Separate WC

Other Information

Council Tax Band: E
Length of Tenancy: Long Let
Deposit: £3,400

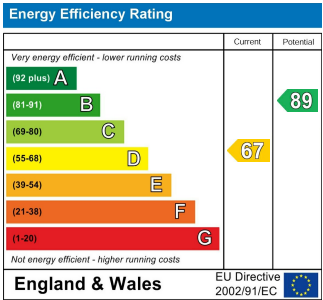


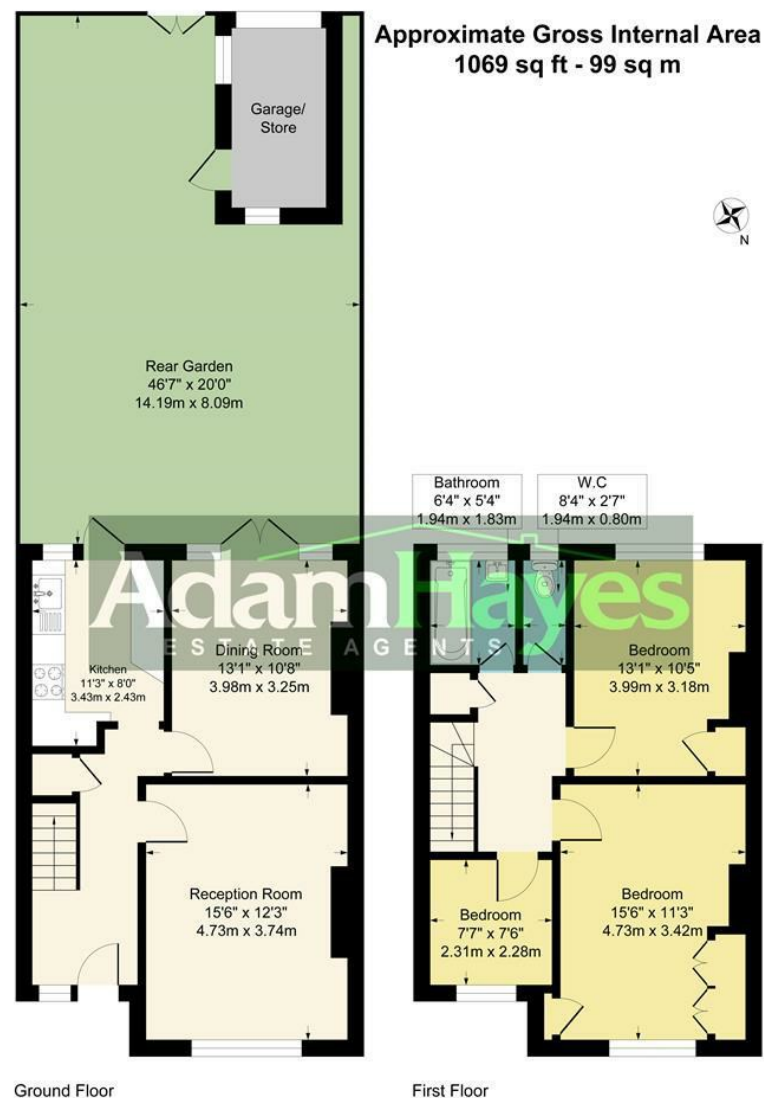
Nearest Stations

Finchley Central Station 0.2 miles
West Finchley Station 0.7 miles
Mill Hill East Station 1.1 miles

Property Description

Situated in the desirable Hervey Close in Finchley Central, this beautiful terraced home combines generous space with comfort and convenience. Featuring three well-proportioned bedrooms, it offers an ideal layout for families or anyone seeking a little extra room. The property has two bright reception rooms with high ceilings, wooden flooring throughout the living areas and soft carpeting in the bedrooms. Additional features include a separate first-floor WC and a well-presented rear garden with the added advantage of storage. Perfectly positioned, the home provides easy access to Finchley Central's array of cafés, restaurants, supermarkets, local parks and excellent transportation links — ideal for those who value peaceful surroundings with the option to explore. This house offers a welcoming space to grow, entertain and seek comfort, with its attractive features and prime location. Early viewing is highly recommended.





Although every attempt has been made to ensure accuracy, all measurements are approximate.
This floorplan is for illustrative purposes only and not to scale.
Measured in accordance with RICS Standards.

These particulars, whilst believed to be accurate, are set out as a general outline only for guidance and do not constitute any part of an offer or contract. Intending purchasers or prospective tenants should not rely on them as statements or representation of fact, but must satisfy themselves by inspection or otherwise as to their accuracy. We have not carried out a detailed survey, not tested the services, appliances and specific fittings. Room sizes should not be relied upon for carpets and furnishings. The measurements given are approximate. No person in this firm's employment has the authority to make or give any representation or warranty in respect of the property.