



High Road, Whetstone, N20

£1,850 PCM

 2 Bedrooms  1 Bathroom  1 Reception



Adam Hayes - North Finchley Office - Lettings 365 Ballards Lane, North Finchley, London, N12 8LL

Tel: 020 8445 4008 Email: info@adam-hayes.co.uk Web: www.adam-hayes.co.uk

High Road, Whetstone, N20

£1,850 PCM

2 Bedrooms 1 Bathrooms 1 Receptions

Key Features

- Two Bedroom Purpose Built Flat
- 21ft Reception
- Modern Kitchen
- Communal Parking
- Great Location

Other Information

Council Tax Band: C
Length of Tenancy: Long Let
Deposit: £2,134

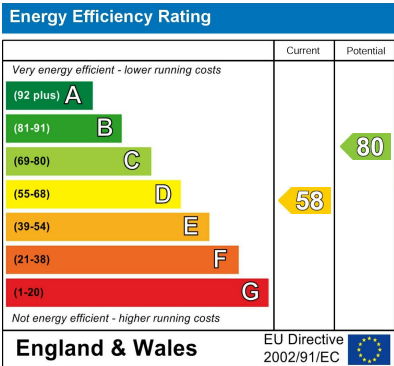


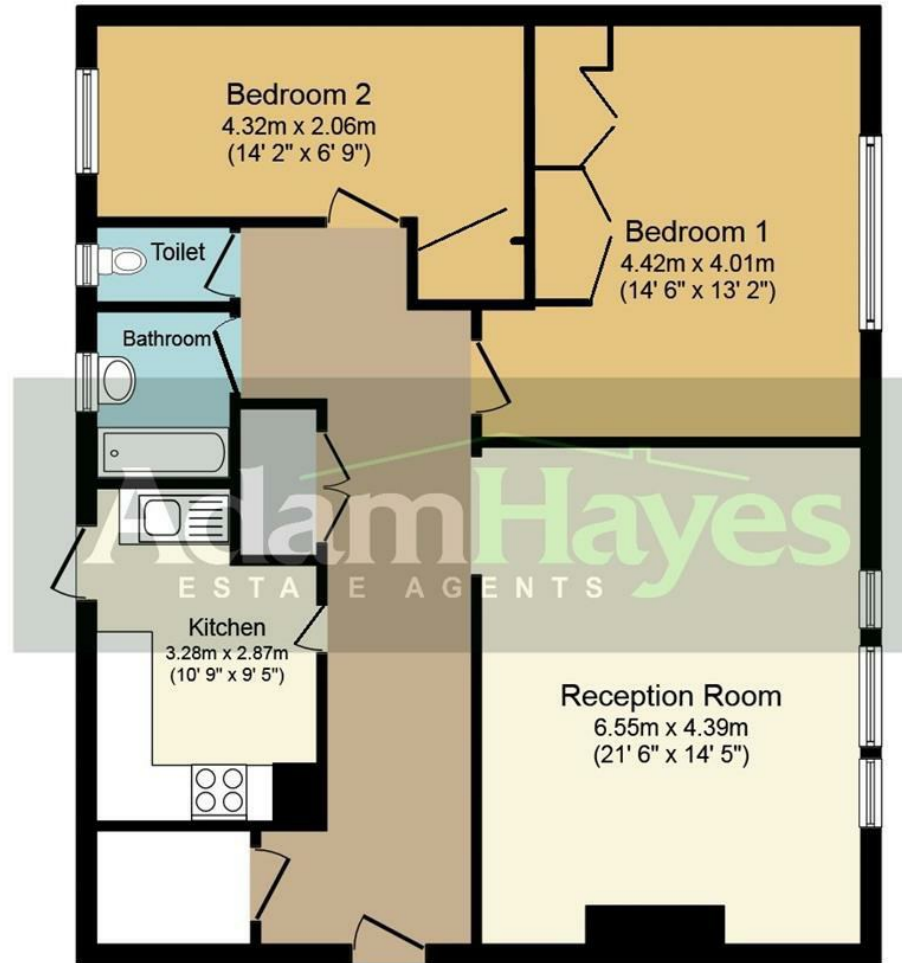
Nearest Stations

- Totteridge & Whetstone - 0.6 Miles
- Woodside Park - 0.8 Miles
- West Finchley - 1.3 Miles

Property Description

A well-presented two double bedroom second floor purpose-built apartment set back from Whetstone High Road and ideally located within easy reach of Totteridge & Whetstone Tube Station (Northern Line) and an excellent range of local amenities. The property boasts a spacious 21ft reception room, a modern fitted kitchen and bathroom, gas central heating, double glazing and access to communal parking. Both Whetstone and North Finchley High Roads are nearby, offering a wide variety of shops, cafés, restaurants, and supermarkets, with local parks also within easy reach. An internal viewing is highly recommended to fully appreciate the size, condition, and superb location. Available exclusively through the landlord’s sole agents, Adam Hayes Estate Agents.





Floor Plan

Total floor area 81.0 sq. m. (872 sq. ft.) approx

This plan is for illustration purposes only and may not be representative of the property. Plan not to scale.

These particulars, whilst believed to be accurate, are set out as a general outline only for guidance and do not constitute any part of an offer or contract. Intending purchasers or prospective tenants should not rely on them as statements or representation of fact, but must satisfy themselves by inspection or otherwise as to their accuracy. We have not carried out a detailed survey, not tested the services, appliances and specific fittings. Room sizes should not be relied upon for carpets and furnishings. The measurements given are approximate. No person in this firm's employment has the authority to make or give any representation or warranty in respect of the property.