



Dale Grove, North Finchley, N12

£3,000 PCM

 4 Bedrooms  2 Bathrooms  2 Receptions



Adam Hayes - North Finchley Office - Lettings 365 Ballards Lane, North Finchley, London, N12 8LL

Tel: 020 8445 4008 Email: info@adam-hayes.co.uk Web: www.adam-hayes.co.uk

Dale Grove, North Finchley, N12

£3,000 PCM

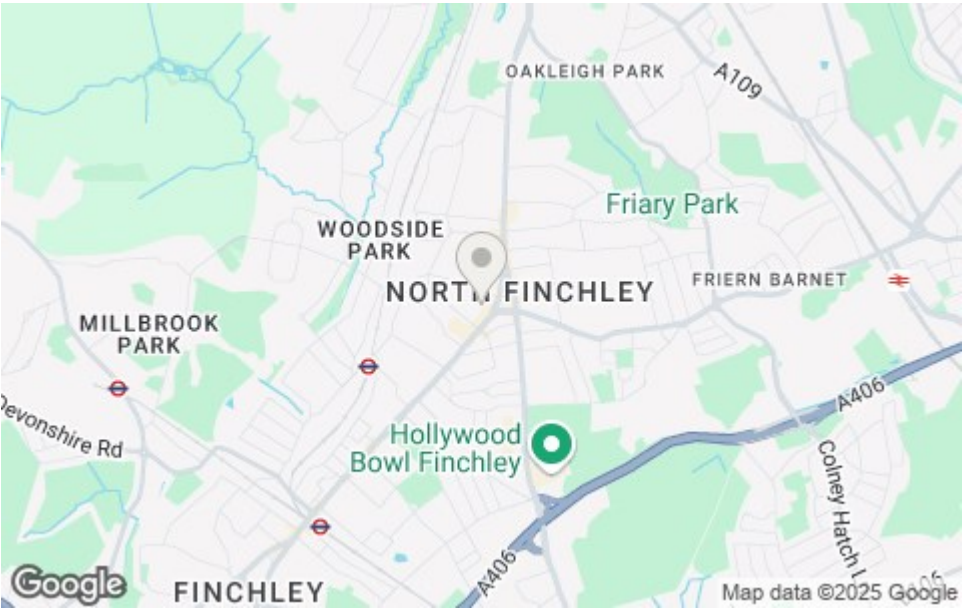
4 Bedrooms 3 Bathrooms 2 Receptions

Key Features

- Four Bedroom House
- Great Location
- Three Bathrooms
- Off Street Parking
- Garden
- Guest WC
- Modern Kitchen
- Two Receptions

Other Information

Council Tax Band: E
Length of Tenancy: Long Let
Deposit: £3,460

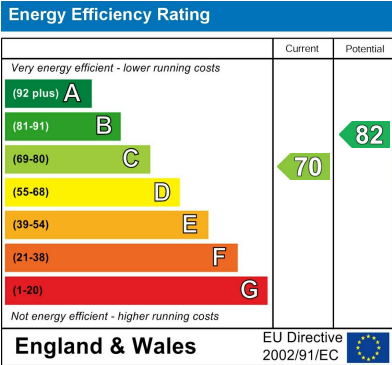


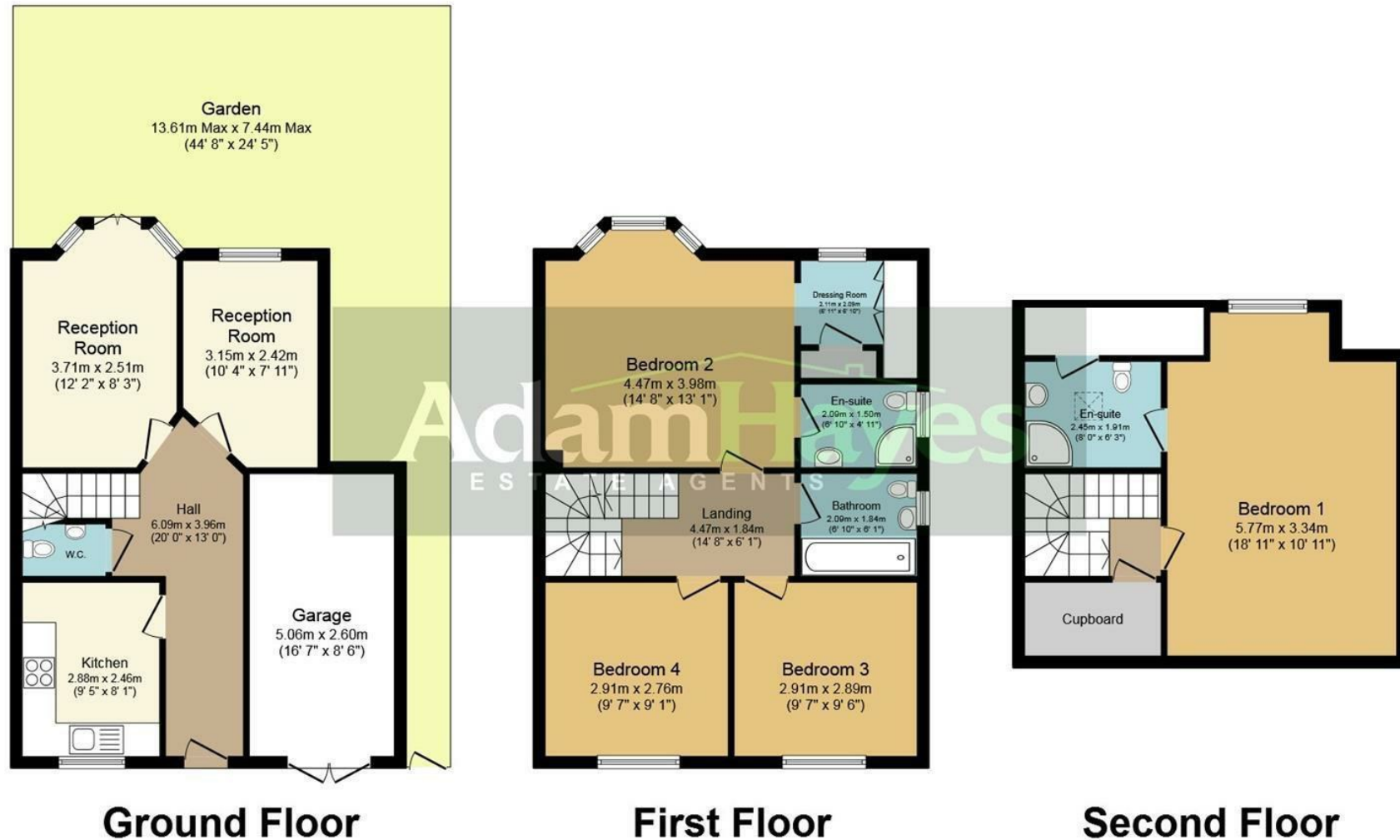
Nearest Stations

Woodside Park Station	0.5 miles
West Finchley Station	0.5 miles
Finchley Central Station	1.0 miles

Property Description

A beautifully presented and spacious four-bedroom, three-bathroom semi-detached family home (including two en-suites), ideally situated within easy reach of both Woodside Park and West Finchley Tube Stations. This desirable property is also conveniently close to popular local schools, a variety of shopping facilities, and a great selection of cafés, restaurants, and the nearby Waitrose supermarket. Several green spaces and local parks are within easy walking distance, making it a perfect setting for family living. The property offers generous and flexible living accommodation, including two bright reception rooms, a modern fitted kitchen, and a guest WC. The impressive principal bedroom extends to approximately 19ft and benefits from excellent built-in storage, with further storage available throughout the home. To the rear, a good-sized private garden provides an ideal space for relaxing, while off-street parking to the front adds further practicality. A superb family home in a prime location, early viewings are highly recommended!





Total floor area 152.0 sq.m. (1,636 sq.ft.) approx

This plan is for illustration purposes only and may not be representative of the property. Plan not to scale.

These particulars, whilst believed to be accurate, are set out as a general outline only for guidance and do not constitute any part of an offer or contract. Intending purchasers or prospective tenants should not rely on them as statements or representation of fact, but must satisfy themselves by inspection or otherwise as to their accuracy. We have not carried out a detailed survey, not tested the services, appliances and specific fittings. Room sizes should not be relied upon for carpets and furnishings. The measurements given are approximate. No person in this firm's employment has the authority to make or give any representation or warranty in respect of the property.