










Adam Hayes - North Finchley Office - Lettings 365 Ballards Lane, North Finchley, London, N12 8LL

Tel: 020 8445 4008 Email: [info@adam-hayes.co.uk](mailto:info@adam-hayes.co.uk) Web: [www.adam-hayes.co.uk](http://www.adam-hayes.co.uk)

Hillcourt Avenue, London, N12 8HA

£2,700 PCM

 3 Bedrooms  1 Bathrooms  2 Receptions

## Key Features

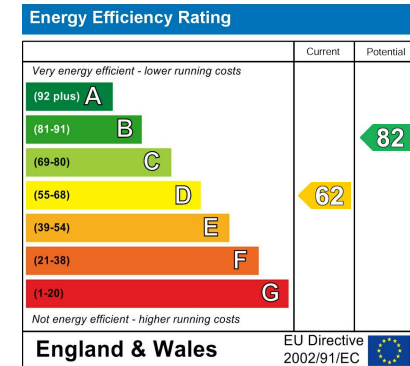
- Three Bedroom House
- Two Receptions
- Modern Kitchen and Bathroom
- Separate WC
- Lovely Garden
- Close To Tube

## Other Information

Council Tax Band: F

Length of Tenancy: Long Let

Deposit: £3,115



## Nearest Stations

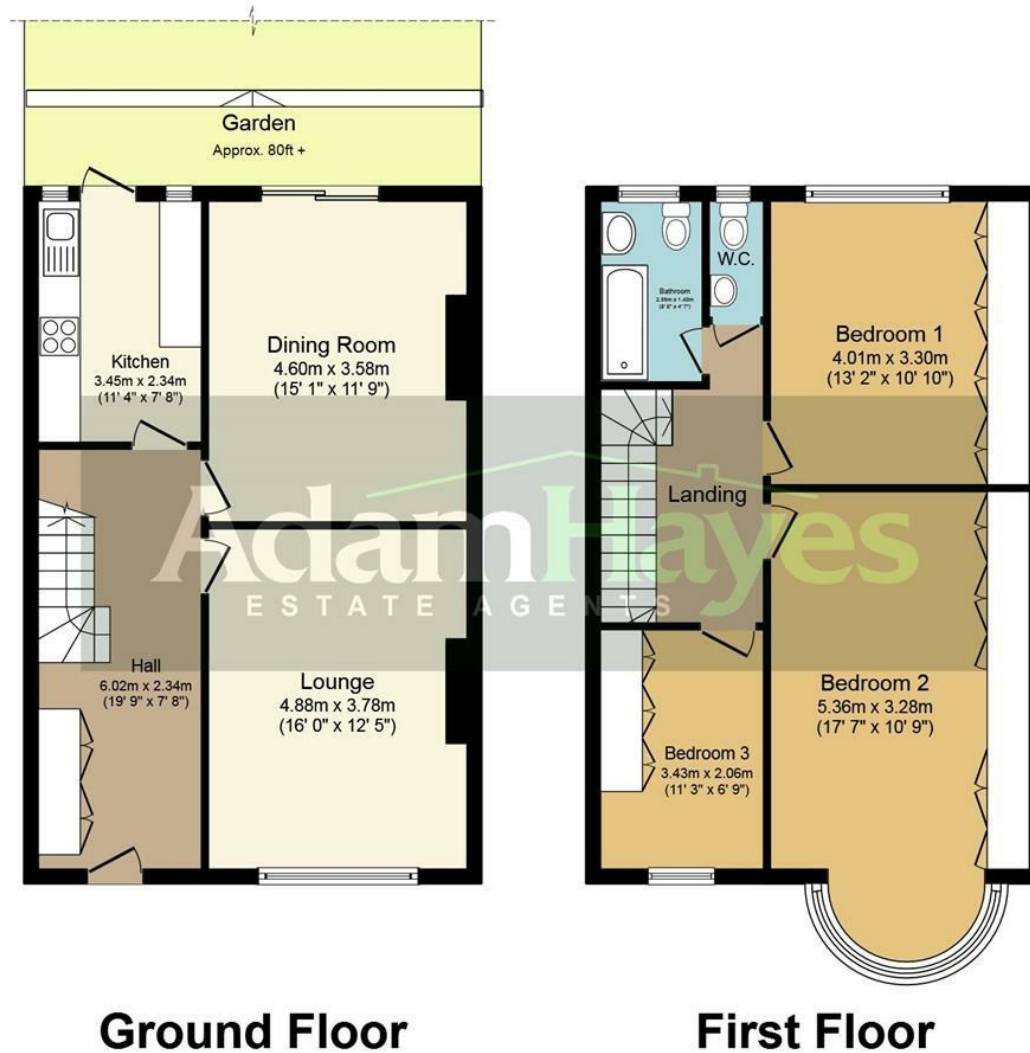
- West Finchley
- Woodside Park

## Property Description

A well-presented three-bedroom terraced house ideally located within easy reach of West Finchley Tube Station (Northern Line) and situated within the catchment area for sought-after local schools. This charming property features two reception rooms, a modern fitted kitchen and bathroom, an additional separate WC, double glazing, gas central heating, and a generous rear garden extending approximately. over 80ft. Conveniently positioned close to North Finchley High Road, residents can enjoy a wide selection of cafés, shops, supermarkets, restaurants, and green open spaces. An internal viewing is highly recommended to fully appreciate the size, location and potential this property offers.

Adam Hayes - North Finchley Office - Lettings 365 Ballards Lane, North Finchley, London, N12 8LL

Tel: 020 8445 4008 Email: [info@adam-hayes.co.uk](mailto:info@adam-hayes.co.uk) Web: [www.adam-hayes.co.uk](http://www.adam-hayes.co.uk)



Total floor area 120.0 sq. m. (1,292 sq. ft.) approx

This plan is for illustration purposes only and may not be representative of the property. Plan not to scale.

These particulars, whilst believed to be accurate, are set out as a general outline only for guidance and do not constitute any part of an offer or contract. Intending purchasers or prospective tenants should not rely on them as statements or representation of fact, but must satisfy themselves by inspection or otherwise as to their accuracy. We have not carried out a detailed survey, not tested the services, appliances and specific fittings. Room sizes should not be relied upon for carpets and furnishings. The measurements given are approximate. No person in this firm's employment has the authority to make or give any representation or warranty in respect of the property.