

Adam Hayes - North Finchley Office - Lettings 365 Ballards Lane, North Finchley, London, N12 8LL

Tel: 020 8445 4008 Email: info@adam-hayes.co.uk Web: www.adam-hayes.co.uk

Moss Hall Grove, North Finchley, N12

£1,950 PCM

2 Bedrooms 1 Bathrooms 1 Receptions

Key Features

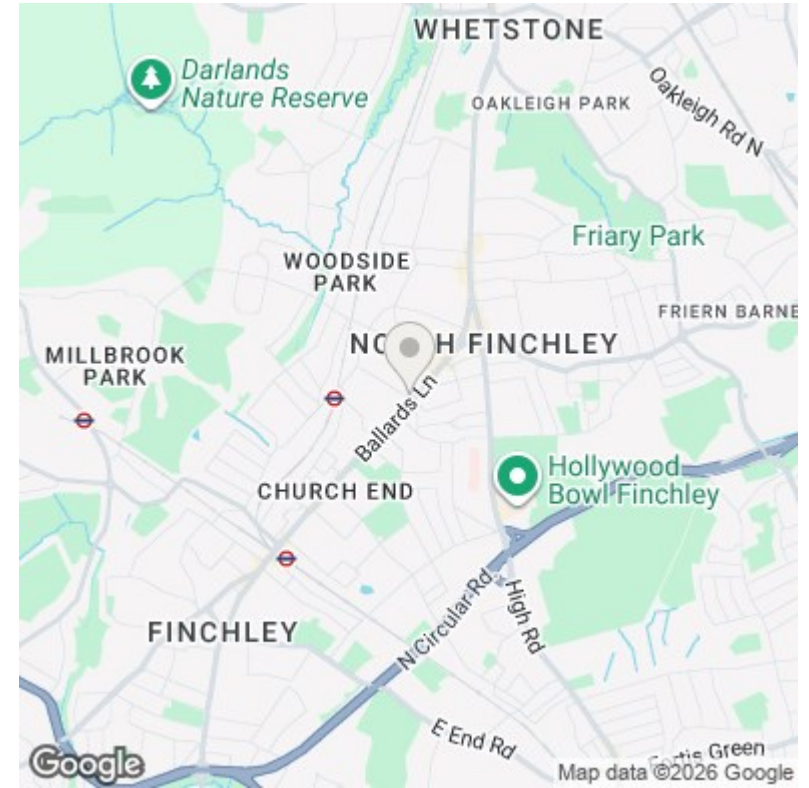
- Spacious Two Double Bedroom Flat
- Ground Floor
- 20ft Lounge
- Balcony
- Ample Storage
- Wooden Flooring
- Lovely Communal Gardens

Other Information

Council Tax Band: D
Length of Tenancy: Long Let
Deposit: £2,250

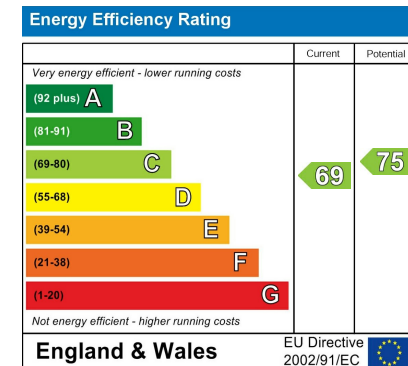
Nearest Stations

West Finchley Station 0.3 miles
Woodside Park Station 0.6 miles
Finchley Central Station 0.8 miles



Property Description

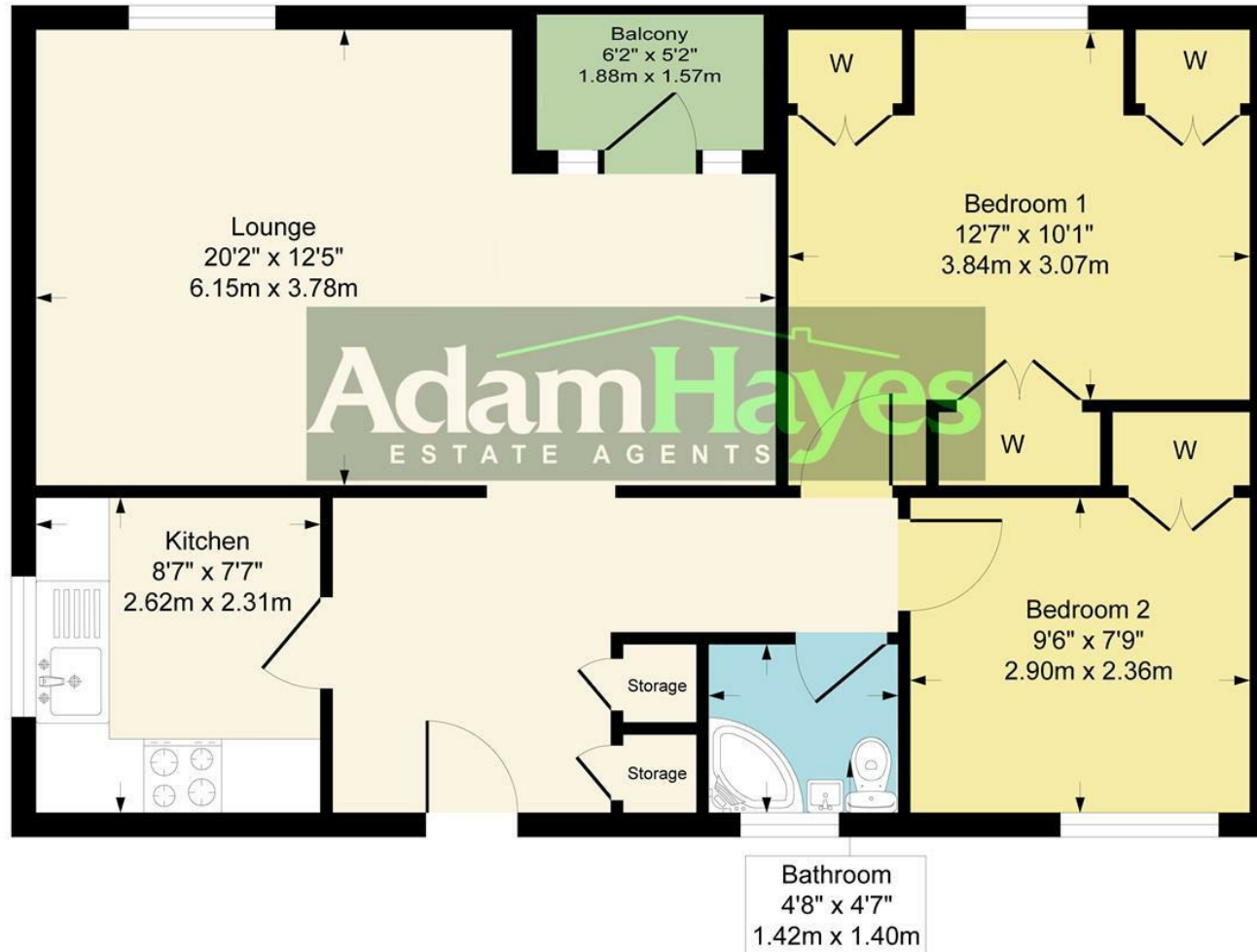
A well presented spacious two double bedroom ground floor apartment set within this modern development just off Moss Hall Grove, conveniently close to North Finchley High Road and Moss Hall School. The property features a generous 20ft lounge, a covered balcony, a fully tiled bathroom, ample storage, laminated wooden flooring, gas central heating, double glazing and access to well-maintained communal gardens with a children's play area. Located in the heart of North Finchley, residents enjoy a vibrant selection of local amenities, including shops, cafes, restaurants, and local parks. Excellent transport links nearby also offer easy access to central London and surrounding areas. To appreciate the size and prime location of this property, an internal viewing is highly recommended through Adam Hayes Estate Agents.



Adam Hayes - North Finchley Office - Lettings 365 Ballards Lane, North Finchley, London, N12 8LL

Tel: 020 8445 4008 Email: info@adam-hayes.co.uk Web: www.adam-hayes.co.uk

Approximate Gross Internal Area 666 sq ft - 62 sq m



These particulars, whilst believed to be accurate, are set out as a general outline only for guidance and do not constitute any part of an offer or contract. Intending purchasers or prospective tenants should not rely on them as statements or representation of fact, but must satisfy themselves by inspection or otherwise as to their accuracy. We have not carried out a detailed survey, not tested the services, appliances and specific fittings. Room sizes should not be relied upon for carpets and furnishings. The measurements given are approximate. No person in this firm's employment has the authority to make or give any representation or warranty in respect of the property.