







Adam Hayes - North Finchley Office - Lettings 365 Ballards Lane, North Finchley, London, N12 8LL

Tel: 020 8445 4008 Email: [info@adam-hayes.co.uk](mailto:info@adam-hayes.co.uk) Web: [www.adam-hayes.co.uk](http://www.adam-hayes.co.uk)

Woodside Park Road, London, N12 8RJ

£1,800 PCM

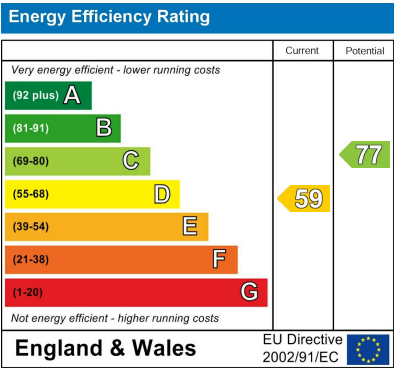
 2 Bedrooms  1 Bathrooms  1 Receptions

Key Features

- Two Double Bedrooms
- Top Floor (Third Floor) Apartment
- Spacious Reception
- Lift Service
- Part Furnished
- Communal Gardens

Other Information

Council Tax Band: D  
Length of Tenancy: Long Let  
Deposit: £2,076



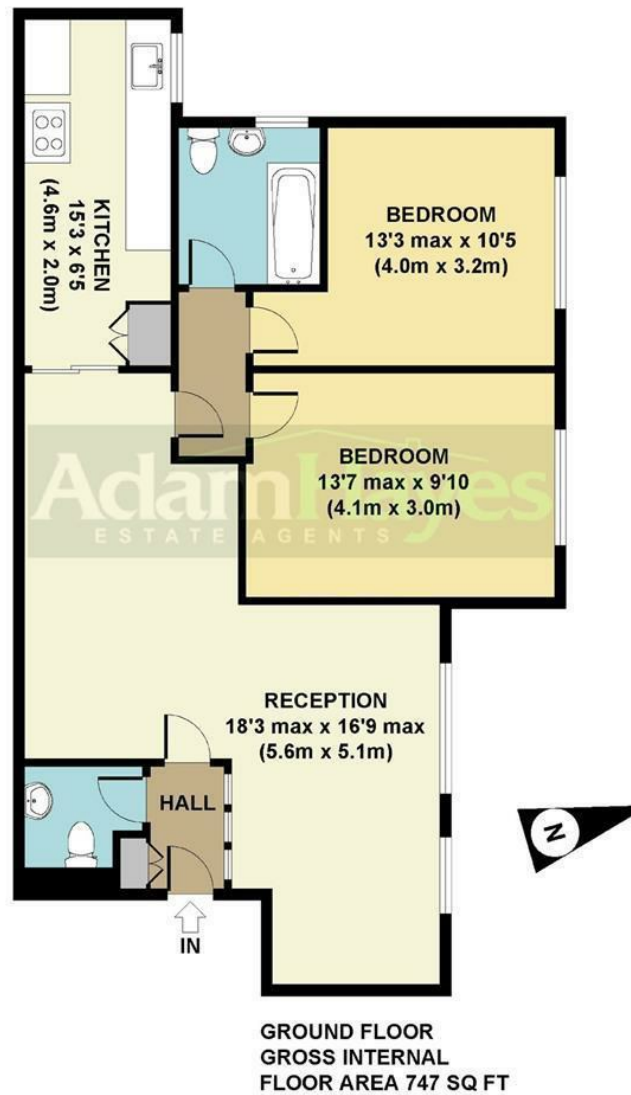
Nearest Stations

- 
- 
- 

Property Description

A well-presented two double bedroom, part-furnished third-floor purpose-built apartment, ideally located just minutes' walk from Woodside Park Tube Station (Northern Line) and local shops and amenities on North Finchley's High Road. The property has been freshly redecorated and benefits from new carpets throughout. Furthermore, the property benefits from a spacious reception room, a modern kitchen, guest WC, double glazing, gas central heating, lift access, communal gardens, and communal parking, this flat is ideal for professional sharers. To truly appreciate the size, layout, and setting, we strongly recommend an internal viewing via the landlords' sole agents, Adam Hayes Estate Agents.

Adam Hayes - North Finchley Office - Lettings 365 Ballards Lane, North Finchley, London, N12 8LL  
Tel: 020 8445 4008 Email: info@adam-hayes.co.uk Web: www.adam-hayes.co.uk



**APPROX. GROSS INTERNAL FLOOR AREA 747 SQ FT / 69 SQ M**  
 Floorplans are for identification and guideline purposes only, not to scale.  
 Compliant with RICS code of measuring practice.  
 Floorplans supplied by [www.draftingfloorplan.com](http://www.draftingfloorplan.com)

These particulars, whilst believed to be accurate, are set out as a general outline only for guidance and do not constitute any part of an offer or contract. Intending purchasers or prospective tenants should not rely on them as statements or representation of fact, but must satisfy themselves by inspection or otherwise as to their accuracy. We have not carried out a detailed survey, not tested the services, appliances and specific fittings. Room sizes should not be relied upon for carpets and furnishings. The measurements given are approximate. No person in this firm's employment has the authority to make or give any representation or warranty in respect of the property.