



Friern Park, North Finchley, N12

 2 Bedrooms  1 Bathroom  1 Reception

£1,750 PCM



Adam Hayes - North Finchley Office - Lettings 365 Ballards Lane, North Finchley, London, N12 8LL

Tel: 020 8445 4008 Email: info@adam-hayes.co.uk Web: www.adam-hayes.co.uk

Friern Park, North Finchley, N12

£1,750 PCM

 2 Bedrooms  1 Bathroom  1 Reception

Key Features

- Beautiful Two Bed Flat
- Convenient Location
- Wooden Flooring
- Modern Kitchen
- Modern Bathroom
- Utility Area

Nearest Stations

- Woodside Park - 0.8 Miles
- West Finchley - 1.1 Miles


Property Description

A beautifully presented two-bedroom purpose-built apartment, peacefully set back off Friern Park and ideally situated within easy reach of Woodside Park Tube Station (Northern Line) and the vibrant array of shops, cafés, and amenities along North Finchley High Road. The property boasts a contemporary kitchen with a separate utility area, a modern bathroom, wooden flooring throughout, double glazing, and gas central heating. Located close to popular local attractions including Friary Park, a variety of supermarkets, and numerous restaurants and cafés, this home offers both comfort and convenience. An internal viewing is highly recommended to fully appreciate all that it has to offer.

Other Information

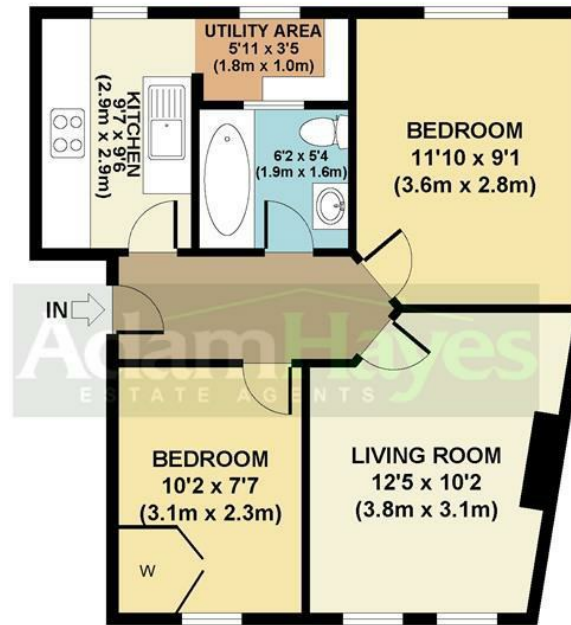
Council Tax Band: C
Length of Tenancy: Long Let
Deposit: £2,019



Energy Efficiency Rating		
	Current	Potential
<i>Very energy efficient - lower running costs</i>		
(92 plus) A		
(81-91) B		
(69-80) C	78	79
(55-68) D		
(39-54) E		
(21-38) F		
(1-20) G		
<i>Not energy efficient - higher running costs</i>		
England & Wales	EU Directive 2002/91/EC	

Adam Hayes - North Finchley Office - Lettings 365 Ballards Lane, North Finchley, London, N12 8LL

Tel: 020 8445 4008 Email: info@adam-hayes.co.uk Web: www.adam-hayes.co.uk



GROUND FLOOR
GROSS INTERNAL
FLOOR AREA 509 SQ FT

APPROX. GROSS INTERNAL FLOOR AREA 509 SQ FT / 47 SQ M
Floorplans are for identification and guideline purposes only, not to scale.
Compliant with RICS code of measuring practice.
Floorplans supplied by www.draftingfloorplan.com

These particulars, whilst believed to be accurate, are set out as a general outline only for guidance and do not constitute any part of an offer or contract. Intending purchasers or prospective tenants should not rely on them as statements or representation of fact, but must satisfy themselves by inspection or otherwise as to their accuracy. We have not carried out a detailed survey, not tested the services, appliances and specific fittings. Room sizes should not be relied upon for carpets and furnishings. The measurements given are approximate. No person in this firm's employment has the authority to make or give any representation or warranty in respect of the property.