

Adam Hayes - North Finchley Office - Lettings 365 Ballards Lane, North Finchley, London, N12 8LL

Tel: 020 8445 4008 Email: info@adam-hayes.co.uk Web: www.adam-hayes.co.uk

Kingsway, North Finchley, N12 0EQ

£1,800 PCM

 2 Bedrooms  2 Bathrooms  1 Receptions

Key Features

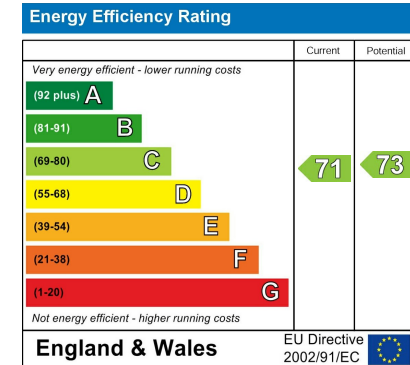
- Modern Purpose Built Flat
- 24ft Lounge / Open Plan Kitchen
- Two Double Bedrooms
- Two Bathrooms
- Balcony
- 24 Hour Concierge
- Underground Parking

Other Information

Council Tax Band: D

Length of Tenancy: Long Let

Deposit: £2,075



Nearest Stations

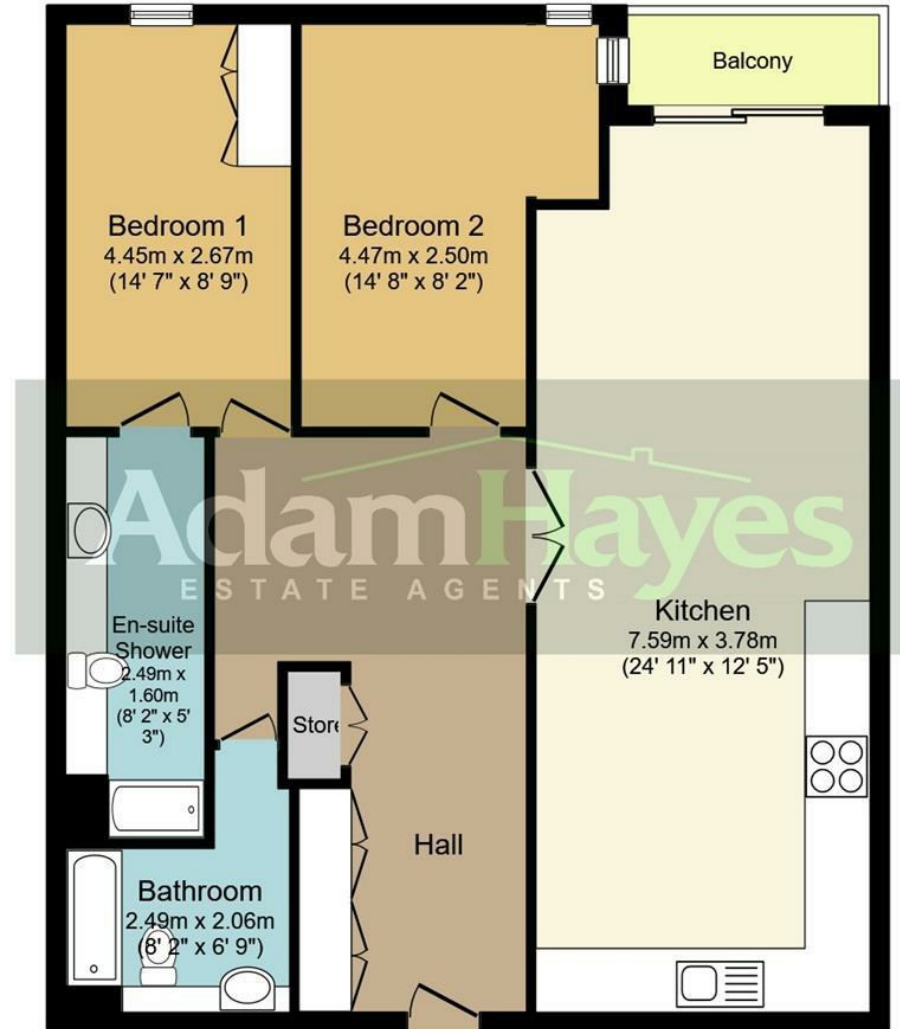
- West Finchley
- North Finchley

Property Description

A beautifully presented sixth-floor apartment offering two generous double bedrooms and two modern bathrooms, set within a luxury lift-serviced development in the heart of North Finchley. Perfectly positioned just moments from a wide range of shops, cafés and restaurants, the property also benefits from excellent transport links, including West Finchley Tube Station. Residents enjoy the added convenience of a 24-hour concierge service. Internally, the apartment features an approx 24ft reception room with a contemporary open-plan fitted kitchen, leading out to a private balcony. Further benefits include secure underground parking for one vehicle. To fully appreciate the size, condition and superb location of this apartment, an internal viewing is highly recommended.

Adam Hayes - North Finchley Office - Lettings 365 Ballards Lane, North Finchley, London, N12 8LL

Tel: 020 8445 4008 Email: info@adam-hayes.co.uk Web: www.adam-hayes.co.uk



Total floor area 93.9 sq. m. (1,011 sq. ft.) approx

This plan is for illustration purposes only and may not be representative of the property. Plan not to scale.

These particulars, whilst believed to be accurate, are set out as a general outline only for guidance and do not constitute any part of an offer or contract. Intending purchasers or prospective tenants should not rely on them as statements or representation of fact, but must satisfy themselves by inspection or otherwise as to their accuracy. We have not carried out a detailed survey, not tested the services, appliances and specific fittings. Room sizes should not be relied upon for carpets and furnishings. The measurements given are approximate. No person in this firm's employment has the authority to make or give any representation or warranty in respect of the property.