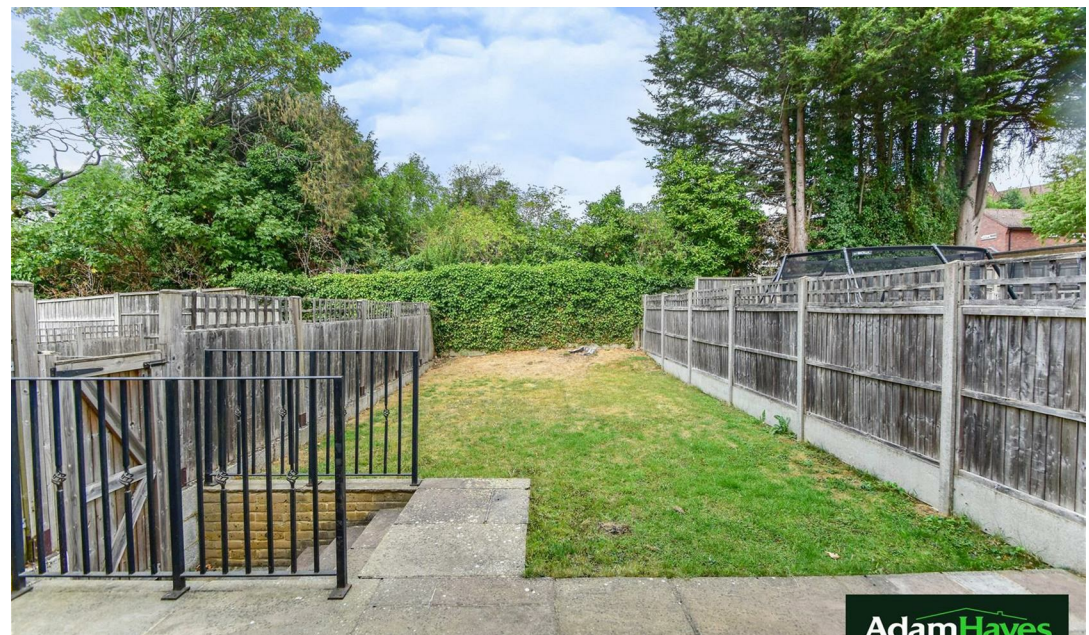




Anastasia Mews, Woodside Park, N12

 4 Bedrooms  3 Bathrooms  1 Reception

£3,700 PCM



Adam Hayes - North Finchley Office - Lettings 365 Ballards Lane, North Finchley, London, N12 8LL

Tel: 020 8445 4008 Email: info@adam-hayes.co.uk Web: www.adam-hayes.co.uk

Anastasia Mews, Woodside Park, N12

£3,700 PCM

4 Bedrooms 3 Bathrooms 1 Receptions

Key Features

- Beautiful Four Bedroom House
- Three Bathrooms
- Gated Development
- Wooden Flooring
- Modern Kitchen
- 18ft Reception
- Off Street Parking
- Garden

Nearest Stations

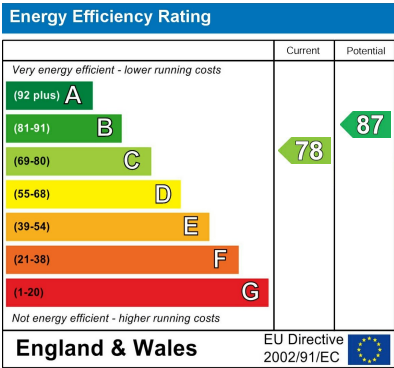
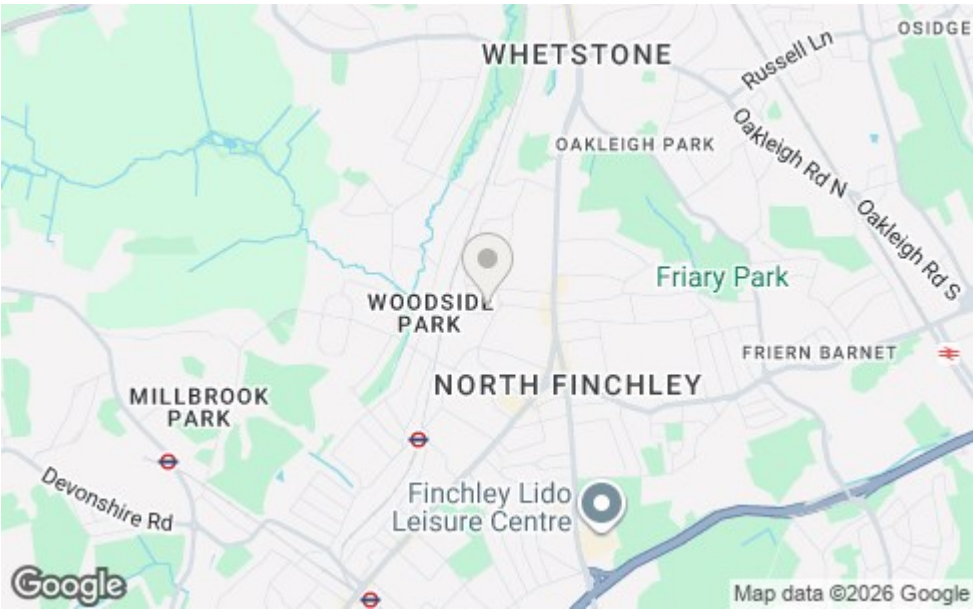
- Woodside Park - 0.3 Miles

Property Description

A beautiful four bedroom three bathroom (two en-suite showers) semi-detached family house situated within this popular gated development conveniently located within easy access of Woodside Park Tube Station (Northern Line) and multiple shops and amenities. This fantastic property benefits from an approximately 18ft reception, a modern fitted kitchen with stone worktops, a guest WC, underfloor heating on the ground floor, wooden flooring, ample storage, double glazing and off-street parking. Top really appreciate the size, condition and location; an internal viewing is highly recommended.

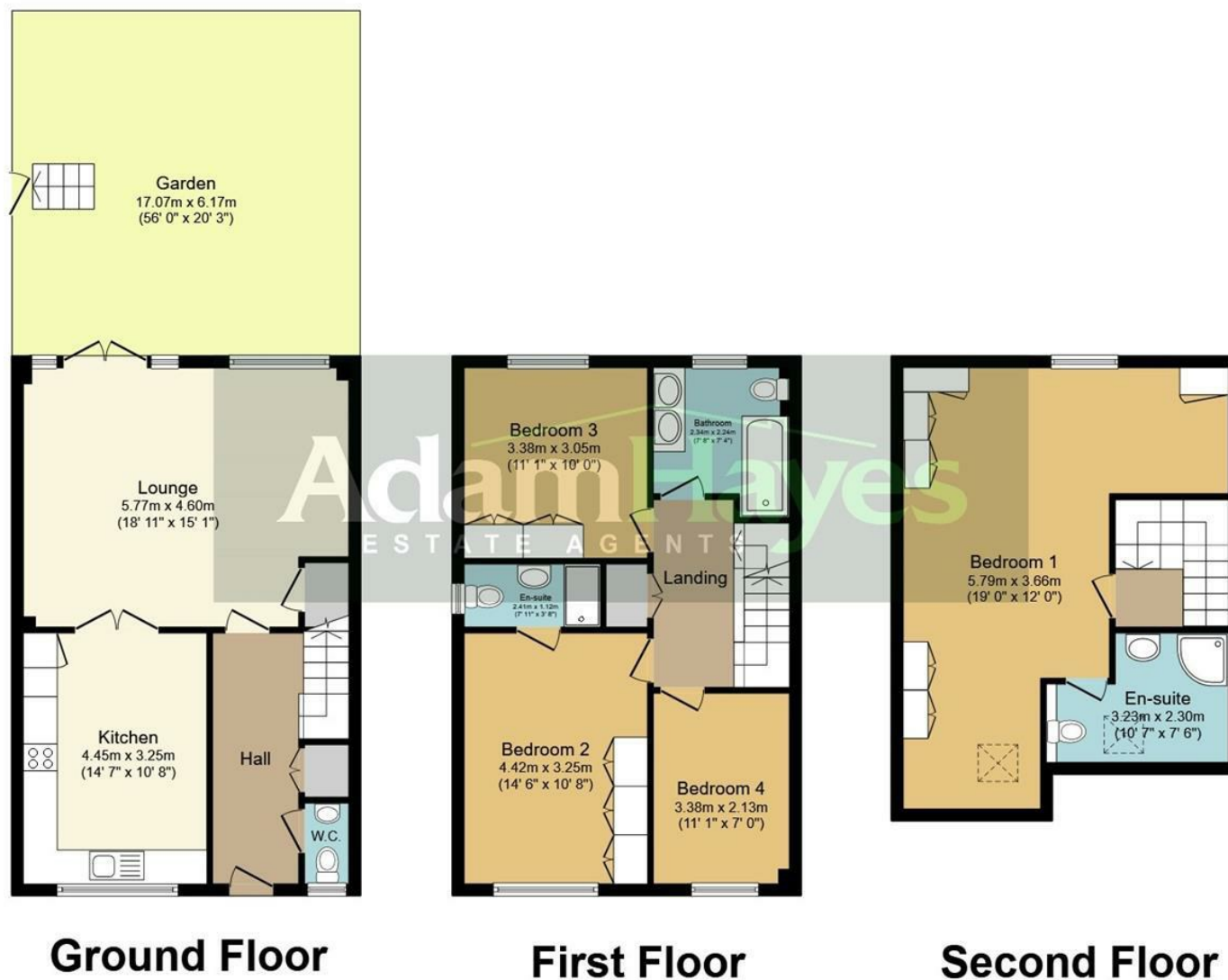
Other Information

Council Tax Band: F
Length of Tenancy: Long Let
Deposit: £4,265



Adam Hayes - North Finchley Office - Lettings 365 Ballards Lane, North Finchley, London, N12 8LL

Tel: 020 8445 4008 Email: info@adam-hayes.co.uk Web: www.adam-hayes.co.uk



Total floor area 147.8 sq.m. (1,590 sq.ft.) approx

This plan is for illustration purposes only and may not be representative of the property. Plan not to scale.

These particulars, whilst believed to be accurate, are set out as a general outline only for guidance and do not constitute any part of an offer or contract. Intending purchasers or prospective tenants should not rely on them as statements or representation of fact, but must satisfy themselves by inspection or otherwise as to their accuracy. We have not carried out a detailed survey, not tested the services, appliances and specific fittings. Room sizes should not be relied upon for carpets and furnishings. The measurements given are approximate. No person in this firm's employment has the authority to make or give any representation or warranty in respect of the property.