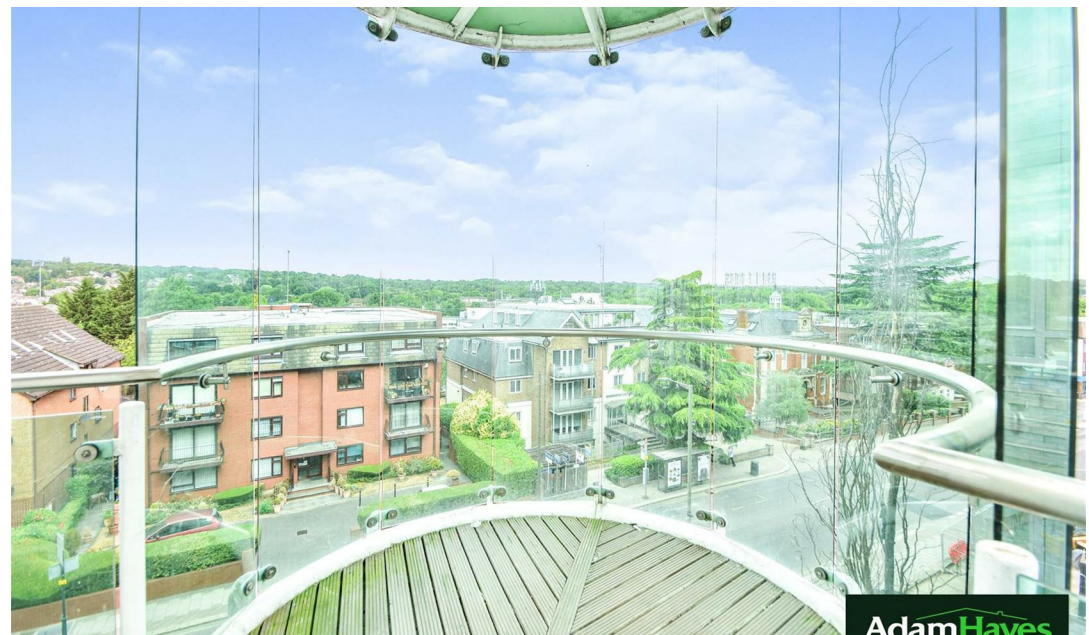




Station Road, Hertfordshire, EN5 1QJ

£1,700 PCM

 2  2  1





Adam Hayes - North Finchley Office - Lettings 365 Ballards Lane, North Finchley, London, N12 8LL

Tel: 020 8445 4008 Email: info@adam-hayes.co.uk Web: www.adam-hayes.co.uk

Station Road, Hertfordshire, EN5 1QJ

£1,700 PCM

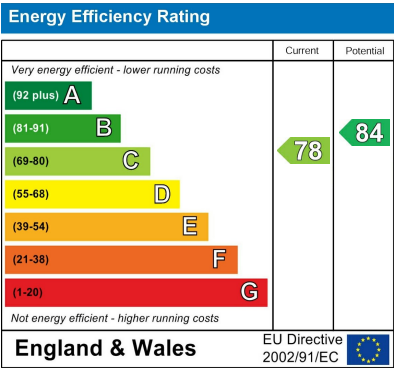
 2 Bedrooms  2 Bathrooms  1 Receptions

Key Features

- Two Double Bedroom Flat
- Two Bathrooms (One An Ensuite Shower)
- Modern Kitchen
- Underground Parking For One Small Car
- Video Entryphone System
- Two Balconies
- Modern Block
- Electric Heaters

Other Information

Council Tax Band: E
Length of Tenancy: Long Let
Deposit: £1,961

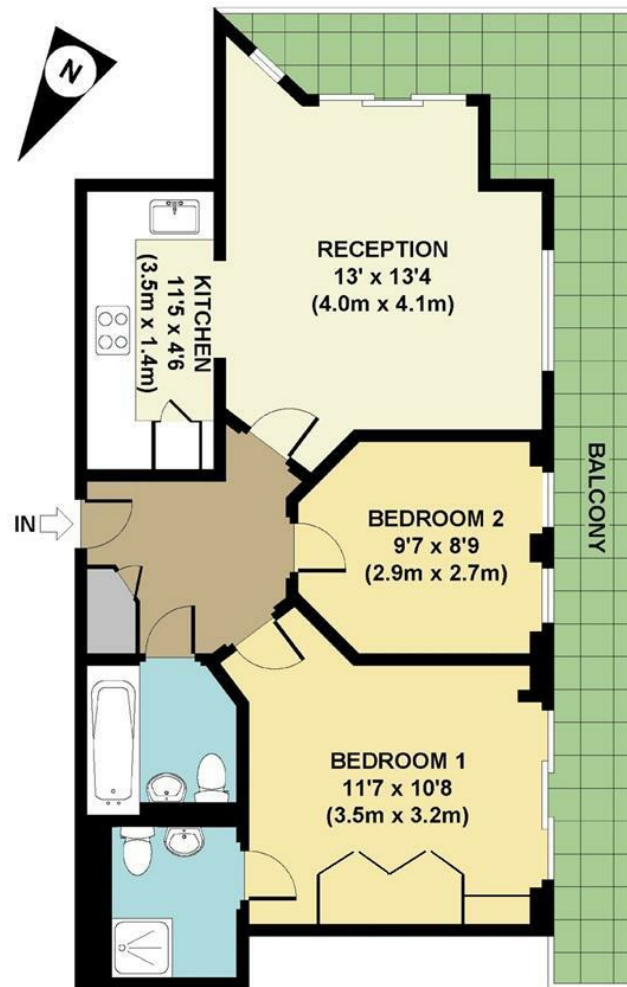


Nearest Stations

-
-
-

Property Description

A bright and spacious two double bedroom, two bathroom apartment (including an en-suite shower room), located on the fourth floor of this modern lift-serviced development set back from Station Road, within easy reach of New Barnet Station. The property features two balconies, a contemporary fitted kitchen with granite worktops, double glazing, a video entryphone system and secure underground parking for a small car. Ideally positioned for local amenities and excellent transport links, this apartment offers both comfort and convenience. An internal viewing is highly recommended to fully appreciate the size, condition and location, via the landlord's sole agents, Adam Hayes Estate Agents.



GROSS INTERNAL
FLOOR AREA 622 SQ FT

APPROX. GROSS INTERNAL FLOOR AREA 622 SQ FT / 58 SQ M
Floorplans are for identification and guideline purposes only, not to scale.
Compliant with RICS code of measuring practice.
Floorplans supplied by www.draftingfloorplan.com

These particulars, whilst believed to be accurate, are set out as a general outline only for guidance and do not constitute any part of an offer or contract. Intending purchasers or prospective tenants should not rely on them as statements or representation of fact, but must satisfy themselves by inspection or otherwise as to their accuracy. We have not carried out a detailed survey, not tested the services, appliances and specific fittings. Room sizes should not be relied upon for carpets and furnishings. The measurements given are approximate. No person in this firm's employment has the authority to make or give any representation or warranty in respect of the property.