





Adam Hayes - North Finchley Office - Lettings 365 Ballards Lane, North Finchley, London, N12 8LL
Tel: 020 8445 4008 Email: info@adam-hayes.co.uk Web: www.adam-hayes.co.uk

Buckingham Avenue, Whetstone, N20

£1,900 PCM

2 Bedrooms 1 Bathrooms 1 Receptions

Key Features

- Two Bedroom Ground Floor Maisonnete
- Prime Location
- Modern Bathroom
- Spacious Lounge
- Front and Rear Garden
- Close To Tube And Shops

Nearest Stations

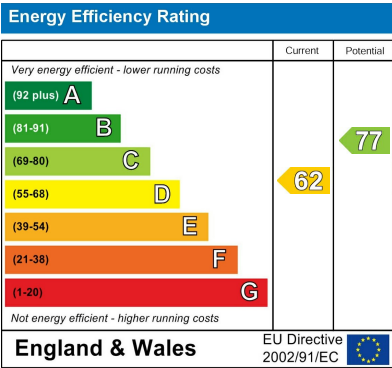
Totteridge & Whetstone Station	0.4 miles
Oakleigh Road Station	0.4 miles
New Barnet Station	0.9 miles

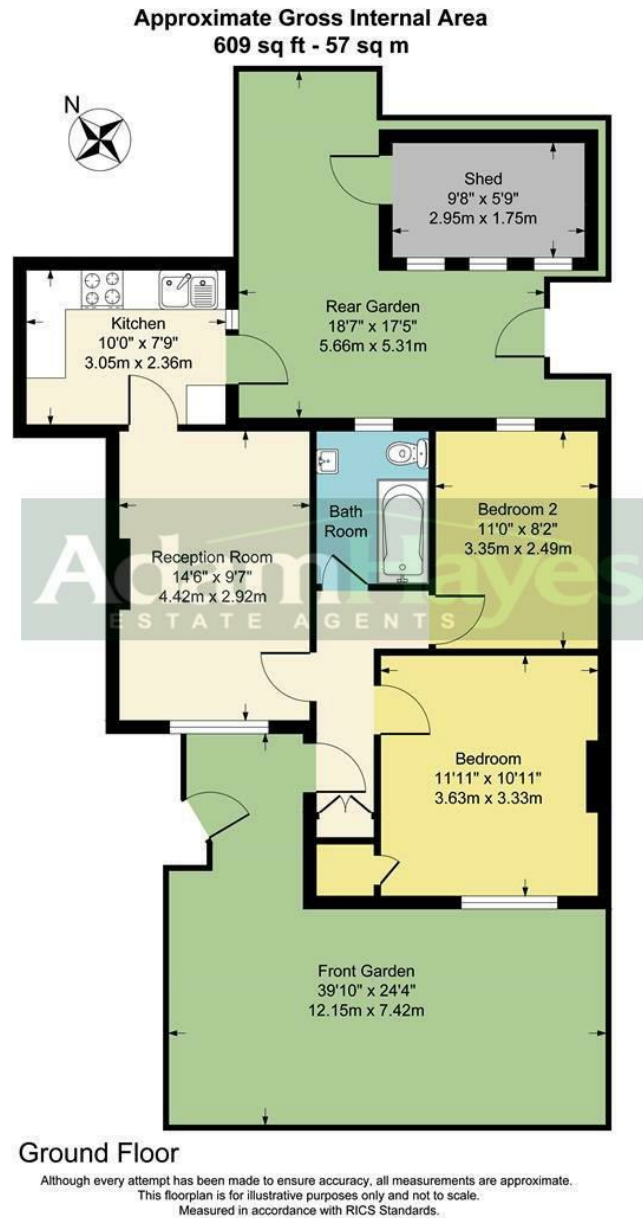
Property Description

Nestled in the heart of Whetstone, this delightful two-bedroom ground floor maisonette on the sought-after Buckingham Avenue offers the perfect blend of comfort, convenience, and location. Beautifully presented throughout, the property is ideally situated within walking distance of the vibrant Whetstone High Road, home to an array of boutique cafés, popular restaurants, and everyday amenities including M&S and Waitrose supermarket. Excellent transport links are also close by with Totteridge & Whetstone Underground Station (Northern Line) and Oakleigh Park Mainline Station both within easy reach. The accommodation comprises a spacious reception room, two generous double bedrooms, a modern bathroom, and a well-appointed kitchen providing direct access to a private rear year complete with additional storage in the shed. The property also benefits from an approximately 39ft front garden, offering additional outdoor space rarely found with similar homes. Further benefits include double glazing and gas central heating, ensuring a comfortable living environment year round. Early viewing is highly recommended to avoid disappointment.

Other Information

Council Tax Band: C
Length of Tenancy: Long Let
Deposit: £2,190





These particulars, whilst believed to be accurate, are set out as a general outline only for guidance and do not constitute any part of an offer or contract. Intending purchasers or prospective tenants should not rely on them as statements or representation of fact, but must satisfy themselves by inspection or otherwise as to their accuracy. We have not carried out a detailed survey, not tested the services, appliances and specific fittings. Room sizes should not be relied upon for carpets and furnishings. The measurements given are approximate. No person in this firm's employment has the authority to make or give any representation or warranty in respect of the property.