






Adam Hayes - North Finchley Office - Lettings 365 Ballards Lane, North Finchley, London, N12 8LL

Tel: 020 8445 4008 Email: [info@adam-hayes.co.uk](mailto:info@adam-hayes.co.uk) Web: [www.adam-hayes.co.uk](http://www.adam-hayes.co.uk)

Friern Park, London, N12 9DA

£2,100 PCM

 2 Bedrooms  1 Bathrooms  1 Receptions

## Key Features

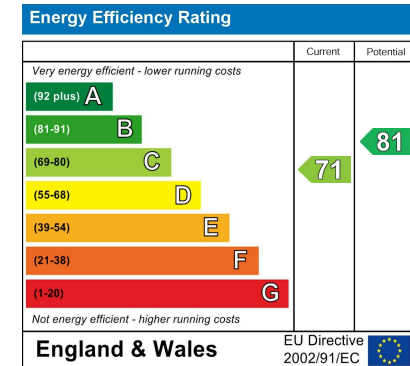
- Two Double Bedroom Flat
- Top Floor
- 27ft Lounge / Open Plan Kitchen
- Eves Storage
- Double Glazing
- Wooden Flooring
- Great Location

## Other Information

Council Tax Band: E

Length of Tenancy: Long Let

Deposit: £2,420



## Nearest Stations

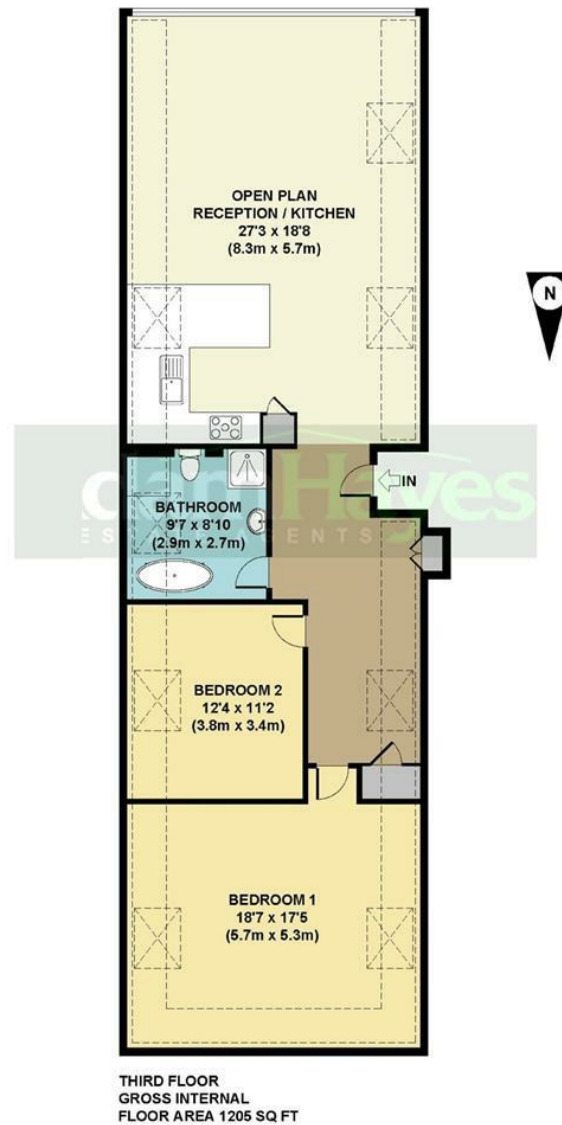
- Woodside Park
- West Finchley

## Property Description

A beautifully presented two double bedroom top floor (third floor) apartment, ideally located within easy reach of North Finchley High Road and Woodside Park Tube Station (Northern Line). The property boasts a stunning 27ft lounge with a modern open-plan fitted kitchen and integrated appliances, an 18ft principal bedroom, wooden flooring, double glazing, and useful eaves storage. Additional benefits include communal off-street parking to the rear available on a first-come first-served basis. Perfectly positioned, the apartment is within close proximity to a range of cafés, shops, restaurants, and supermarkets, with Friary Park also nearby. An internal viewing is highly recommended to fully appreciate the space, condition, and location on offer.

Adam Hayes - North Finchley Office - Lettings 365 Ballards Lane, North Finchley, London, N12 8LL

Tel: 020 8445 4008 Email: [info@adam-hayes.co.uk](mailto:info@adam-hayes.co.uk) Web: [www.adam-hayes.co.uk](http://www.adam-hayes.co.uk)



APPROX. GROSS INTERNAL FLOOR AREA 1205 SQ FT / 112 SQ M  
Floorplans are for identification and guideline purposes only, not to scale.  
Compliant with RICS code of measuring practice.  
Floorplans supplied by [www.draftingfloorplan.com](http://www.draftingfloorplan.com)

These particulars, whilst believed to be accurate, are set out as a general outline only for guidance and do not constitute any part of an offer or contract. Intending purchasers or prospective tenants should not rely on them as statements or representation of fact, but must satisfy themselves by inspection or otherwise as to their accuracy. We have not carried out a detailed survey, not tested the services, appliances and specific fittings. Room sizes should not be relied upon for carpets and furnishings. The measurements given are approximate. No person in this firm's employment has the authority to make or give any representation or warranty in respect of the property.