







Adam Hayes - Finchley Central Office - Lettings 348 Regents Park Road, Finchley Central, London, N3 2LJ

Tel: 0208 189 6333 Email: info@adam-hayes.co.uk Web: www.adam-hayes.co.uk

Wentworth Park, London, N3 1YJ

£2,500 PCM

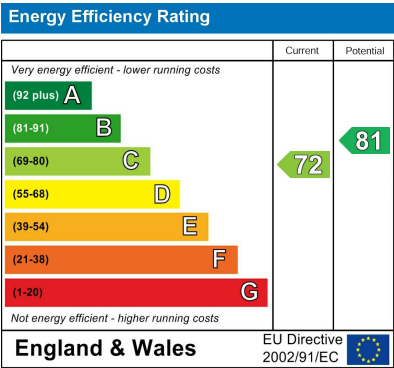
 3 Bedrooms  1 Bathrooms  1 Receptions

Key Features

- Three Bedroom Flat
- Modern Kitchen
- 16ft Lounge
- Balcony
- Communal Gardens
- Close to Tube and Shops
- Ample Storage

Other Information

Council Tax Band: C
Length of Tenancy: Long Let
Deposit: £2,884



Nearest Stations

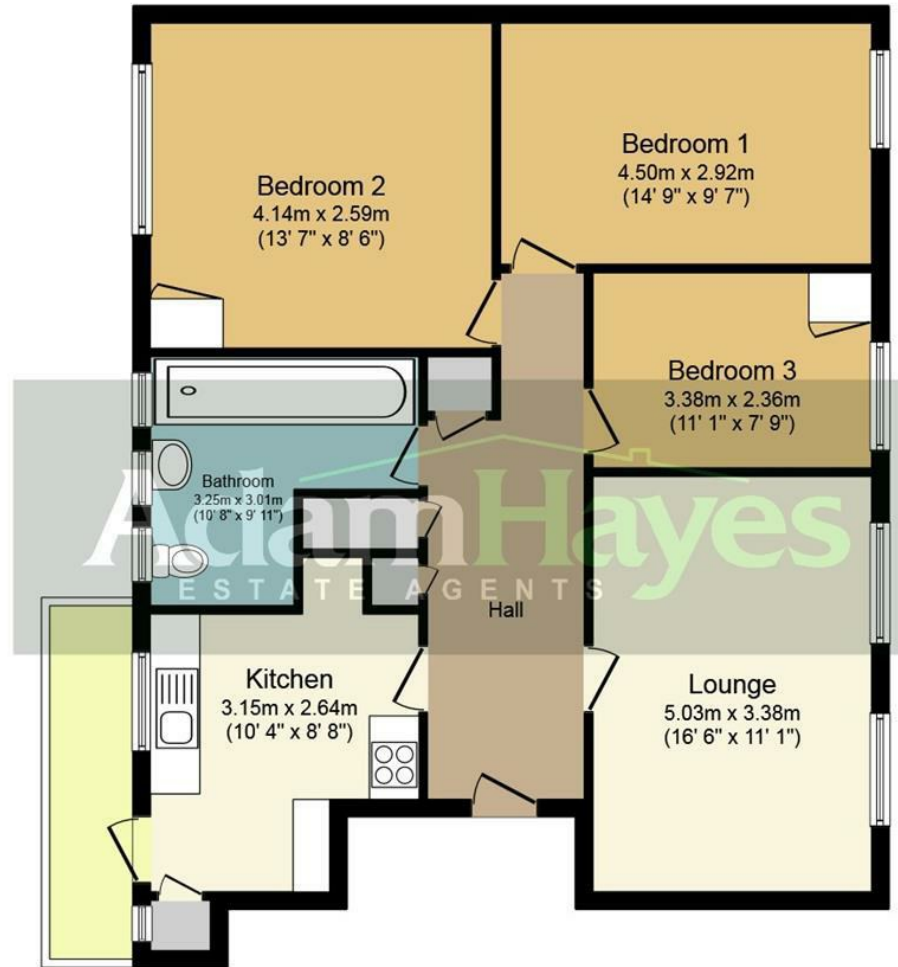
- West Finchley
- Finchley Central

Property Description

A spacious three double bedroom second floor purpose built apartment with balcony situated in this excellent location close to West Finchley Tube Station, Victoria Park and multiple shopping facilities. The property benefits from an approximately 16ft lounge, a modern fitted kitchen, ample storage, communal gardens and communal parking for one car on a first come first serve basis. Waitrose supermarket, Aldi and multiple restaurants, cafes and coffee shops are also all within easy access. To appreciate the size and location, an early viewing is highly recommended!

Adam Hayes - Finchley Central Office - Lettings 348 Regents Park Road, Finchley Central, London, N3 2LJ

Tel: 0208 189 6333 Email: info@adam-hayes.co.uk Web: www.adam-hayes.co.uk



Floor Plan

Total floor area 89.0 sq. m. (958 sq. ft.) approx

This plan is for illustration purposes only and may not be representative of the property. Plan not to scale.

These particulars, whilst believed to be accurate, are set out as a general outline only for guidance and do not constitute any part of an offer or contract. Intending purchasers or prospective tenants should not rely on them as statements or representation of fact, but must satisfy themselves by inspection or otherwise as to their accuracy. We have not carried out a detailed survey, not tested the services, appliances and specific fittings. Room sizes should not be relied upon for carpets and furnishings. The measurements given are approximate. No person in this firm's employment has the authority to make or give any representation or warranty in respect of the property.