



Etchingam Park Road, London, N3 2EA

£1,900 PCM

 2  1  1



Adam Hayes - Finchley Central Office - Lettings 348 Regents Park Road, Finchley Central, London, N3 2LJ

Tel: 0208 189 6333 Email: info@adam-hayes.co.uk Web: www.adam-hayes.co.uk

Etchingam Park Road, London, N3 2EA

£1,900 PCM

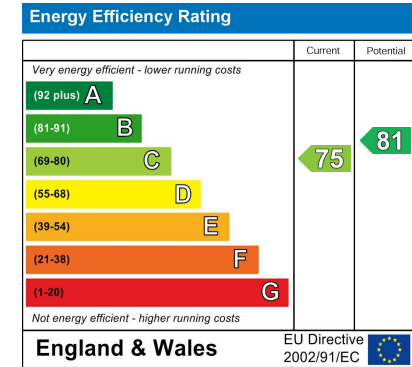
 2 Bedrooms  1 Bathrooms  1 Receptions

Key Features

- Two Bedroom Flat
- Fantastic Location
- Modern Shower Room
- Modern Kitchen
- Close to Tube and Shops
- Near Victoria Park
- Off Street Parking

Other Information

Council Tax Band: D
Length of Tenancy: Long Let
Deposit: £2,190



Nearest Stations

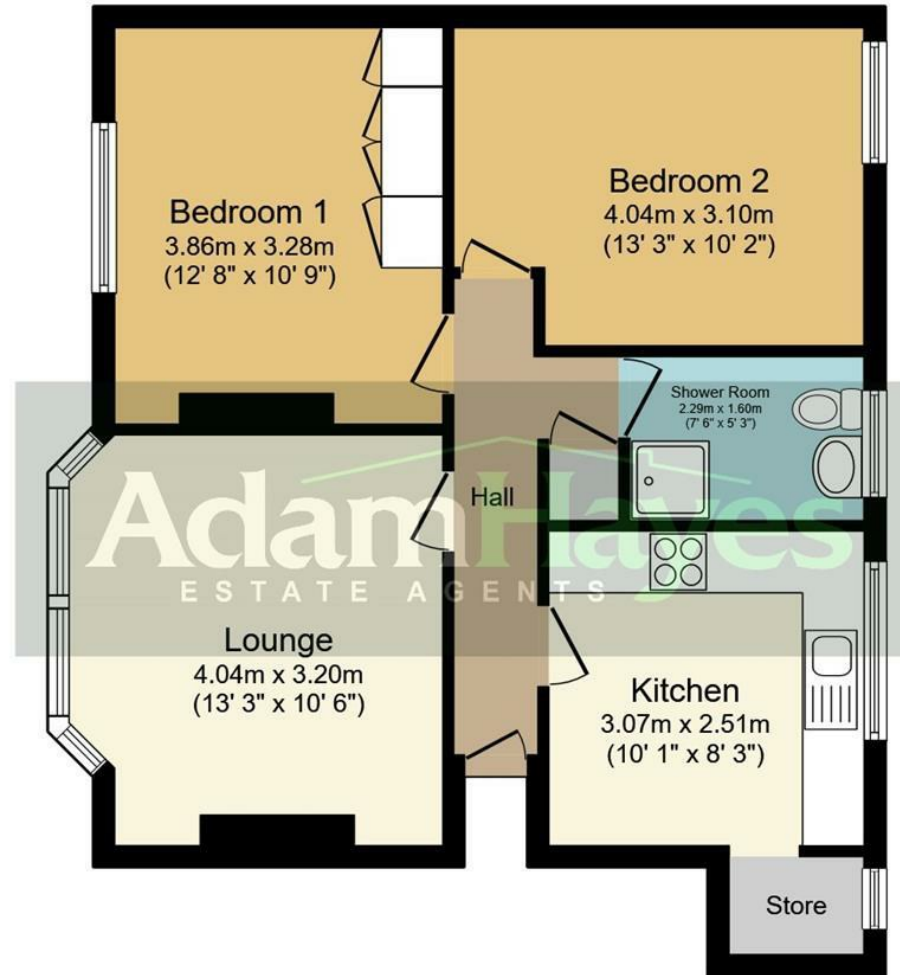
-
-
-

Property Description

A charming first floor apartment boasting two spacious double bedrooms, nestled in a prime location offering convenient access to both West Finchley and Finchley Central Tube Stations (Northern Line), as well as Victoria Park and an array of local amenities. This delightful property features a generously proportioned fitted kitchen, complemented by an approximately 13ft reception area, a modern fully tiled shower room, wooden flooring, double glazing and gas central heating throughout. Further benefits include off-street parking for one car. To appreciate the size and location, and early viewing is highly recommended!

Adam Hayes - Finchley Central Office - Lettings 348 Regents Park Road, Finchley Central, London, N3 2LJ

Tel: 0208 189 6333 Email: info@adam-hayes.co.uk Web: www.adam-hayes.co.uk



Floor Plan

Total floor area 59.8 sq.m. (644 sq.ft.) approx

This plan is for illustration purposes only and may not be representative of the property. Plan not to scale.

These particulars, whilst believed to be accurate, are set out as a general outline only for guidance and do not constitute any part of an offer or contract. Intending purchasers or prospective tenants should not rely on them as statements or representation of fact, but must satisfy themselves by inspection or otherwise as to their accuracy. We have not carried out a detailed survey, not tested the services, appliances and specific fittings. Room sizes should not be relied upon for carpets and furnishings. The measurements given are approximate. No person in this firm's employment has the authority to make or give any representation or warranty in respect of the property.