





Adam Hayes - Finchley Central Office - Lettings 348 Regents Park Road, Finchley Central, London, N3 2LJ  
Tel: 0208 189 6333 Email: [info@adam-hayes.co.uk](mailto:info@adam-hayes.co.uk) Web: [www.adam-hayes.co.uk](http://www.adam-hayes.co.uk)

Regents Park Road, London, N3 2LJ

£1,500 PCM

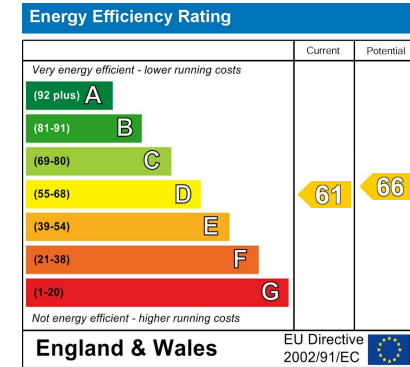
 1 Bedrooms  1 Bathrooms  1 Receptions

## Key Features

- One Bedroom Top Floor Flat
- Open Plan Kitchen
- Wooden Flooring
- Double Glazing
- Close to Tube and Shops
- Unfurnished

## Other Information

Council Tax Band: B  
Length of Tenancy: Long Let  
Deposit: £1,730



## Nearest Stations

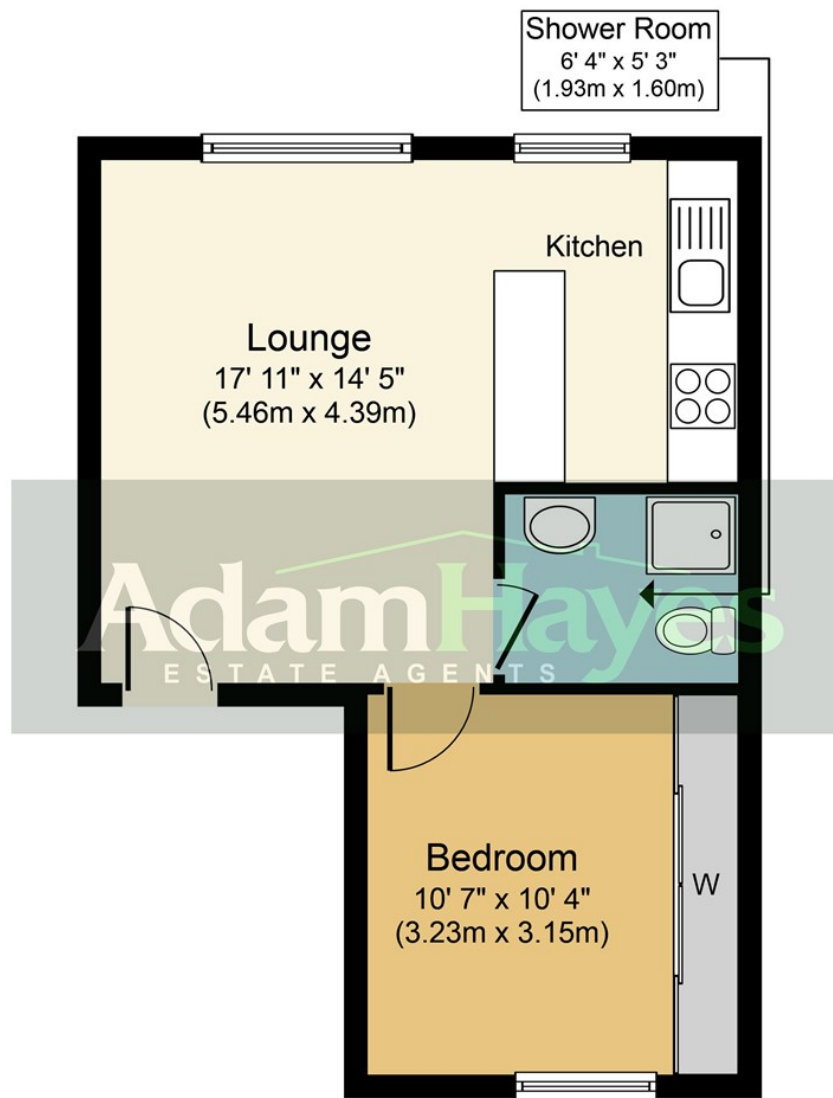
-  
-  
-

## Property Description

A well-presented one-bedroom first floor conversion, situated above a commercial premises and ideally located just minutes' walk from Finchley Central Tube Station (Northern Line) as well as a wide selection of local shops, cafés, restaurants, and other amenities. The property boasts a goodsized lounge with an open-plan kitchen, a separate bedroom on the mezzanine floor, wooden flooring, double glazing throughout and gas central heating. Offered unfurnished. Early viewings highly recommended!

Adam Hayes - Finchley Central Office - Lettings 348 Regents Park Road, Finchley Central, London, N3 2LJ

Tel: 0208 189 6333 Email: [info@adam-hayes.co.uk](mailto:info@adam-hayes.co.uk) Web: [www.adam-hayes.co.uk](http://www.adam-hayes.co.uk)



**Approx. Gross Internal Floor Area 377 sq. ft. (35.0 sq. m.)**

Whilst every attempt has been made to ensure the accuracy of the floor plan contained here, measurements of doors, windows, rooms and any other items are approximate and no responsibility is taken for any error, omission, or mis-statement. This plan is for illustrative purposes only and should be used as such by any prospective purchaser or tenant. The services, systems and appliances shown have not been tested and no guarantee as to their operability or efficiency can be given.  
Copyright V360 Ltd 2017 | www.houseviz.com

These particulars, whilst believed to be accurate, are set out as a general outline only for guidance and do not constitute any part of an offer or contract. Intending purchasers or prospective tenants should not rely on them as statements or representation of fact, but must satisfy themselves by inspection or otherwise as to their accuracy. We have not carried out a detailed survey, not tested the services, appliances and specific fittings. Room sizes should not be relied upon for carpets and furnishings. The measurements given are approximate. No person in this firm's employment has the authority to make or give any representation or warranty in respect of the property.