





Adam Hayes - Finchley Central Office - Lettings 348 Regents Park Road, Finchley Central, London, N3 2LJ
Tel: 0208 189 6333 Email: info@adam-hayes.co.uk Web: www.adam-hayes.co.uk

North Crescent, Finchley Central, N3

£1,850 PCM

2 Bedrooms 2 Bathrooms 1 Receptions

Key Features

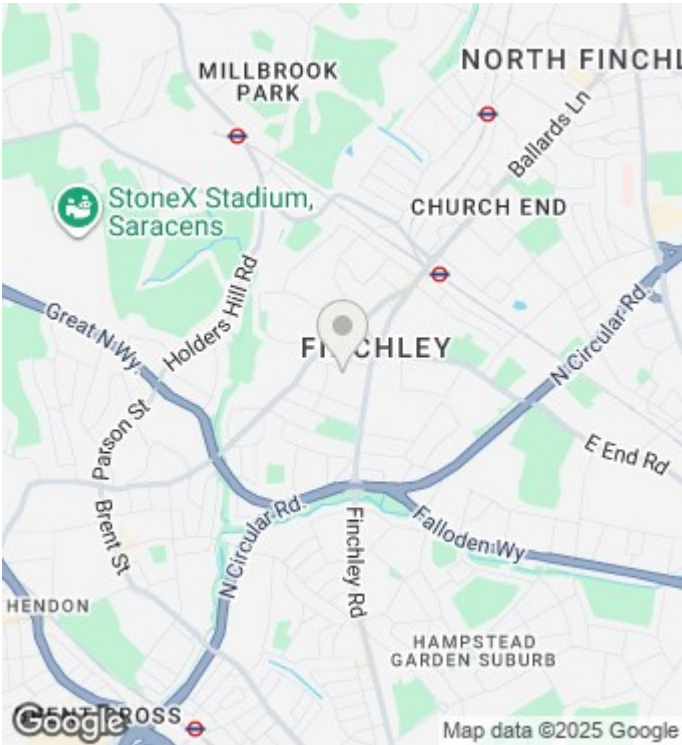
- Two Bedroom Maisonette
- Two Bathrooms (One an Ensuite)
- Private Rear Patio
- Wooden Flooring
- Own Entrance
- Side Communal Gardens
- 15ft Kitchen / Diner

Other Information

Council Tax Band: D
Length of Tenancy: Long Let
Deposit: £2,134

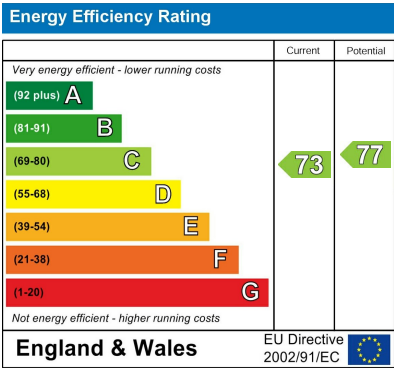
Nearest Stations

Finchley Central Station 0.5 miles
Mill Hill East Station 0.9 miles
West Finchley Station 1.1 miles



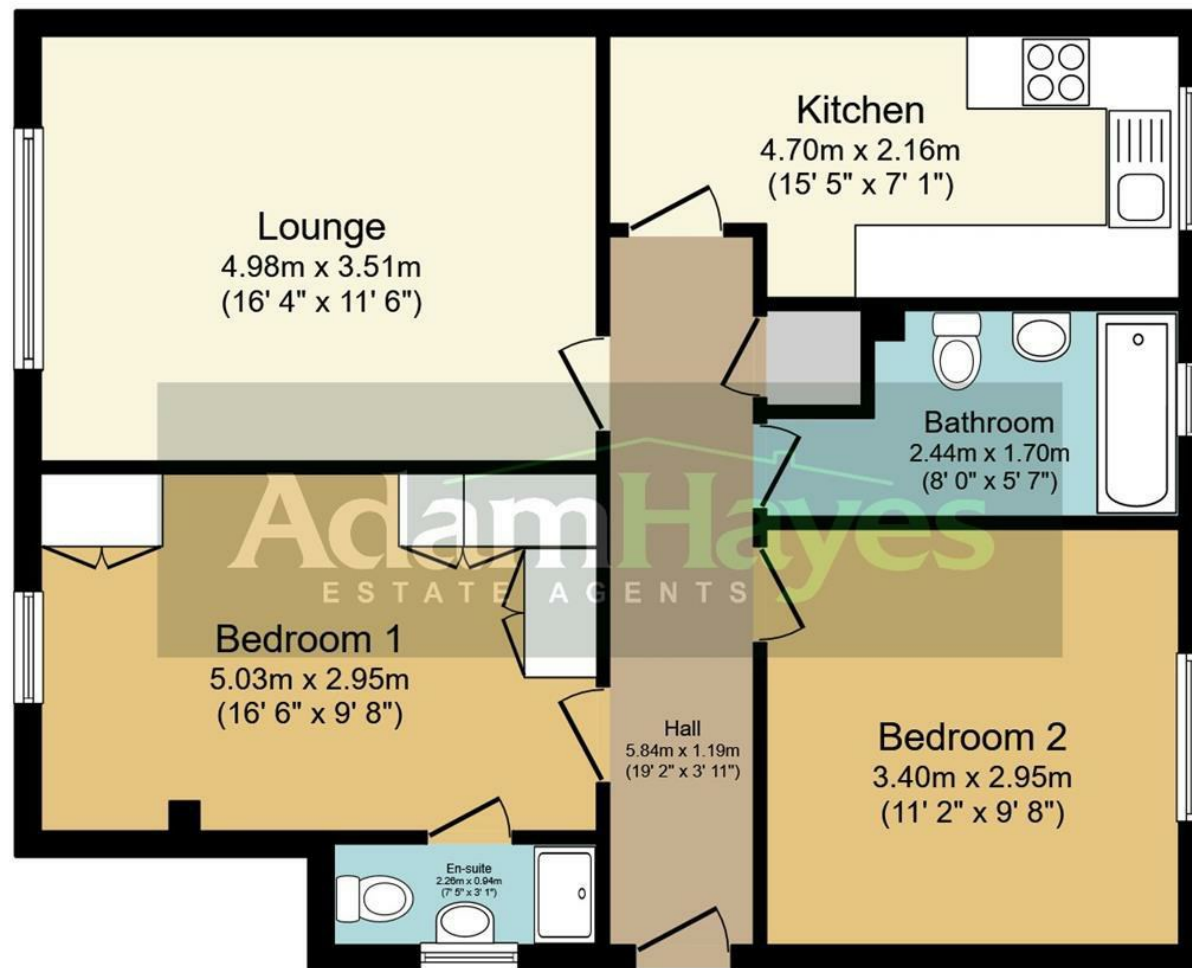
Property Description

A two double bedroom two bathroom (one an ensuite shower room) ground floor purpose built Maisonette situated in this popular residential location within easy access to Finchley Central Tube Station and local amenities. The property has its own side entrance and benefits from an approx. 16ft lounge, a 15ft kitchen with dining area, own entrance, wooden flooring, ample storage, gas central heating, a rear paved private patio and side communal gardens. To really appreciate the size, condition and location, an internal viewing is highly recommended!



Adam Hayes - Finchley Central Office - Lettings 348 Regents Park Road, Finchley Central, London, N3 2LJ

Tel: 0208 189 6333 Email: info@adam-hayes.co.uk Web: www.adam-hayes.co.uk



Floor Plan

Total floor area 68.0 sq.m. (732 sq.ft.) approx

This plan is for illustration purposes only and may not be representative of the property. Plan not to scale.

These particulars, whilst believed to be accurate, are set out as a general outline only for guidance and do not constitute any part of an offer or contract. Intending purchasers or prospective tenants should not rely on them as statements or representation of fact, but must satisfy themselves by inspection or otherwise as to their accuracy. We have not carried out a detailed survey, not tested the services, appliances and specific fittings. Room sizes should not be relied upon for carpets and furnishings. The measurements given are approximate. No person in this firm's employment has the authority to make or give any representation or warranty in respect of the property.