








Adam Hayes - Finchley Central Office - Lettings 348 Regents Park Road, Finchley Central, London, N3 2LJ
Tel: 0208 189 6333 Email: info@adam-hayes.co.uk Web: www.adam-hayes.co.uk

Etchingham Park Road, London, N3 2DZ

£1,750 PCM

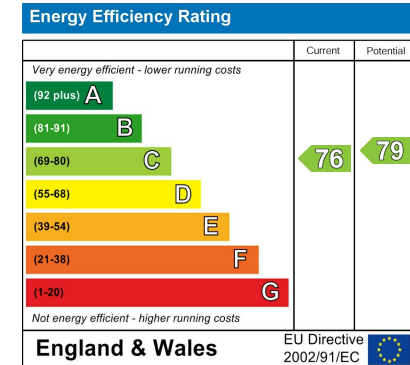
 1 Bedrooms  1 Bathrooms  1 Receptions

Key Features

- Newly Decorated One Bed Flat
- First Floor
- Lift Access
- Spacious Lounge
- Separate Kitchen
- Excellent Location
- Close to Tube, Shops and Parks

Other Information

Council Tax Band: C
Length of Tenancy: Long Let
Deposit: £2,015



Nearest Stations

-
-
-

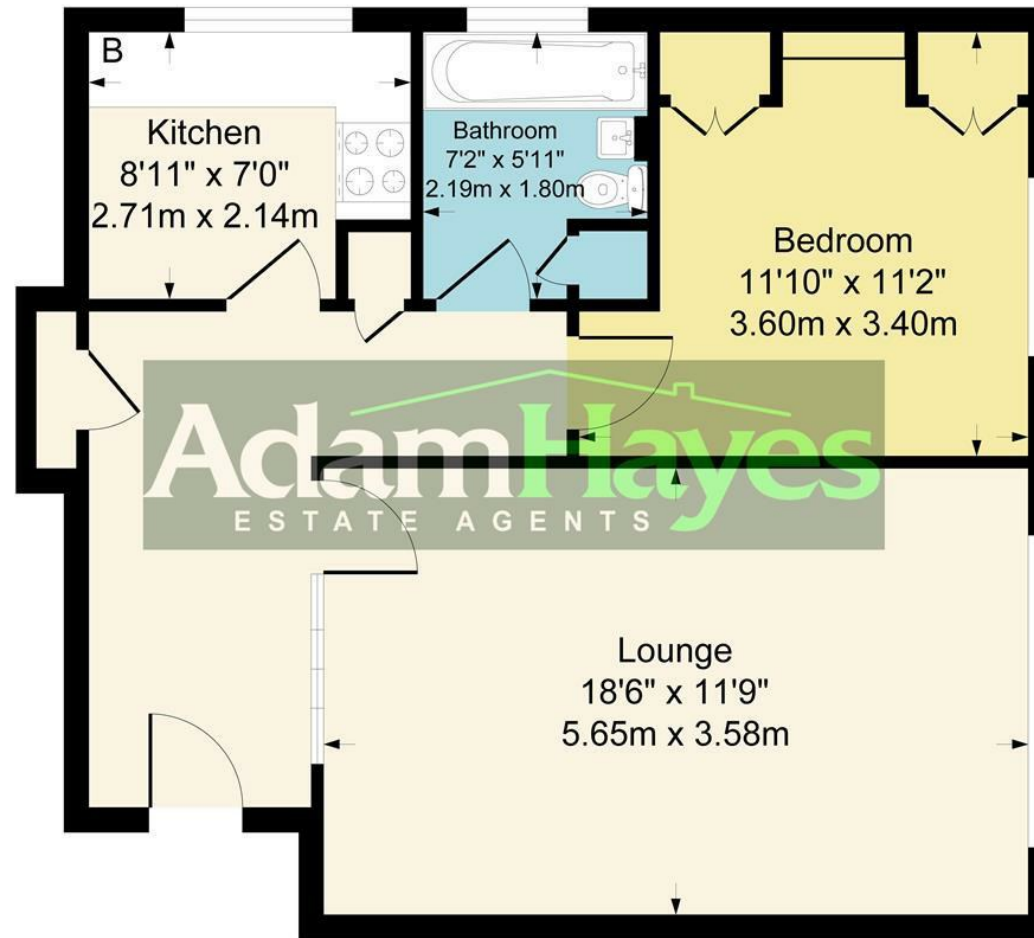
Property Description

A newly decorated and spacious one-bedroom first-floor purpose-built apartment, ideally situated in this excellent location within easy reach of West Finchley Underground Station, Ballards Lane and its wide range of shops, restaurants, cafés and local amenities. The property offers bright and well-proportioned accommodation throughout, comprising a generous reception room, a separate fitted kitchen and a bathroom suite. Further benefits include double-glazed windows, gas central heating, an entryphone system and lift access. Victoria Park and a variety of local facilities are also nearby, making this an ideal home for those seeking convenience and comfort. Offered unfurnished. Early viewing is highly recommended.

Adam Hayes - Finchley Central Office - Lettings 348 Regents Park Road, Finchley Central, London, N3 2LJ

Tel: 0208 189 6333 Email: info@adam-hayes.co.uk Web: www.adam-hayes.co.uk

Approximate Gross Internal Area 574 sq ft - 53 sq m



Although every attempt has been made to ensure accuracy, all measurements are approximate.
This floorplan is for illustrative purposes only and not to scale.
Measured in accordance with RICS Standards.

These particulars, whilst believed to be accurate, are set out as a general outline only for guidance and do not constitute any part of an offer or contract. Intending purchasers or prospective tenants should not rely on them as statements or representation of fact, but must satisfy themselves by inspection or otherwise as to their accuracy. We have not carried out a detailed survey, not tested the services, appliances and specific fittings. Room sizes should not be relied upon for carpets and furnishings. The measurements given are approximate. No person in this firm's employment has the authority to make or give any representation or warranty in respect of the property.