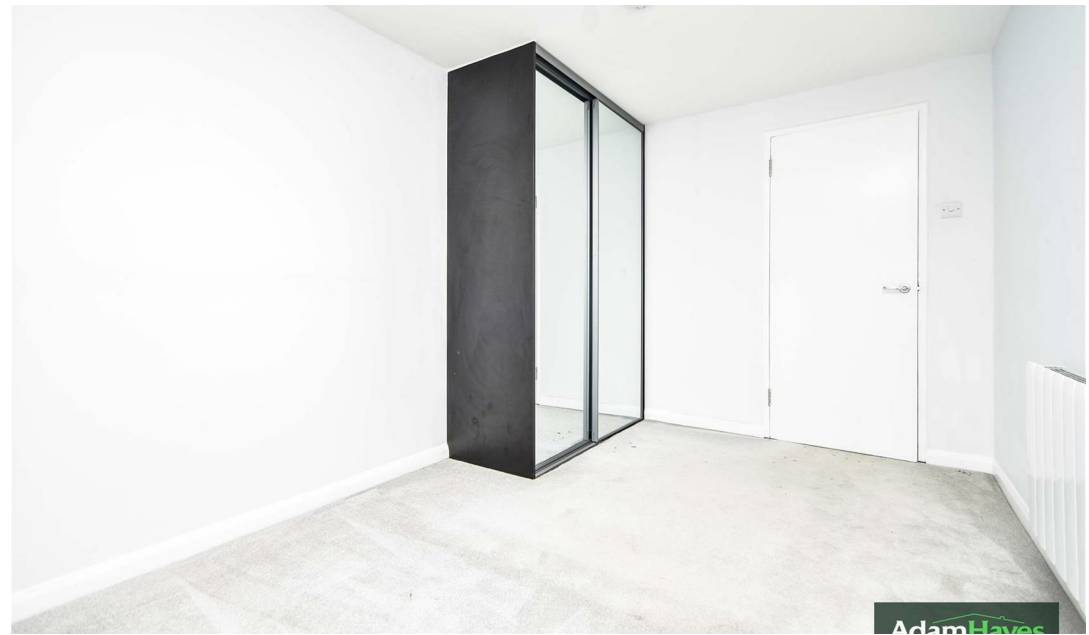




Bittacy Hill, Mill Hill East, NW7

 1 Bedroom  1 Bathroom  1 Reception

£1,600 PCM



Adam Hayes - Finchley Central Office - Lettings 348 Regents Park Road, Finchley Central, London, N3 2LJ

Tel: 0208 189 6333 Email: info@adam-hayes.co.uk Web: www.adam-hayes.co.uk

Bittacy Hill, Mill Hill East, NW7

£1,600 PCM

1 Bedrooms 1 Bathrooms 1 Receptions

Key Features

- Modern One Bedroom Flat
- 14ft Modern Fitted Kitchen
- Fully Tiled Bathroom
- Ample Storage
- Close to Mill Hill East Tube

Nearest Stations

- Mill Hill East

Property Description

A contemporary one bedroom, second floor apartment in this purpose built development, ideally located within easy reach of Mill Hill East Tube Station (Northern Line) and a variety of local amenities. This well-presented property features a spacious 14ft eat-in kitchen, a bright 13ft lounge, fitted wardrobes, and a modern, fully tiled bathroom. Additional highlights include laminated wooden flooring in the living areas, carpets in the bedroom, ample storage space, and double glazing throughout. To fully appreciate the size, location, and excellent condition of this apartment, an internal viewing is highly recommended!

Other Information

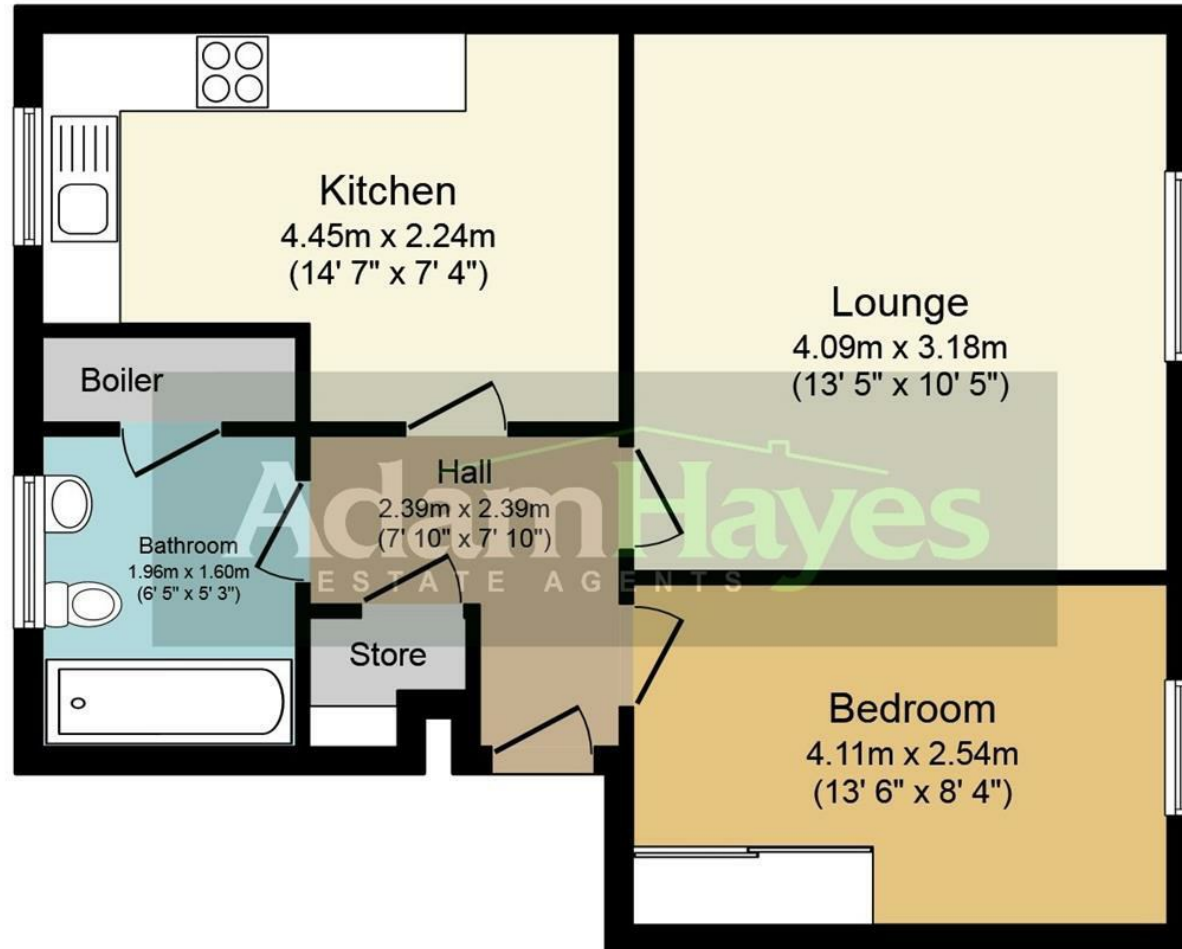
Council Tax Band: B
Length of Tenancy: Long Let
Deposit: £1,846



Energy Efficiency Rating		
	Current	Potential
<i>Very energy efficient - lower running costs</i>		
(92 plus) A		
(81-91) B		
(69-80) C		73
(55-68) D		
(39-54) E	46	
(21-38) F		
(1-20) G		
<i>Not energy efficient - higher running costs</i>		
England & Wales	EU Directive 2002/91/EC	

Adam Hayes - Finchley Central Office - Lettings 348 Regents Park Road, Finchley Central, London, N3 2LJ

Tel: 0208 189 6333 Email: info@adam-hayes.co.uk Web: www.adam-hayes.co.uk



Floor Plan

Total floor area 52.9 sq.m. (569 sq.ft.) approx

This plan is for illustration purposes only and may not be representative of the property. Plan not to scale.

These particulars, whilst believed to be accurate, are set out as a general outline only for guidance and do not constitute any part of an offer or contract. Intending purchasers or prospective tenants should not rely on them as statements or representation of fact, but must satisfy themselves by inspection or otherwise as to their accuracy. We have not carried out a detailed survey, not tested the services, appliances and specific fittings. Room sizes should not be relied upon for carpets and furnishings. The measurements given are approximate. No person in this firm's employment has the authority to make or give any representation or warranty in respect of the property.