



High Road, Whetstone N20

£475,000

 2 Bedrooms  2 Bathrooms  1 Reception





Adam Hayes  
ESTATE AGENTS



Adam Hayes  
ESTATE AGENTS



Adam Hayes




Adam Hayes

Adam Hayes - North Finchley Office - Sales 365 Ballards Lane, North Finchley, London, N12 8LL

Tel: 020 8445 4008 Email: [info@adam-hayes.co.uk](mailto:info@adam-hayes.co.uk) Web: [www.adam-hayes.co.uk](http://www.adam-hayes.co.uk)

# High Road, Whetstone N20

£475,000

 2 Bedrooms  2 Bathrooms  1 Receptions

## Key Features

- Two Bedrooms
- Two Bathrooms
- Off Road Parking
- 19ft Reception
- Garage
- Communal Gardens

## Other Information

Tenure: Leasehold - Share of Freehold  
Service Charge: £2,400 p/a  
Council Tax Band: C

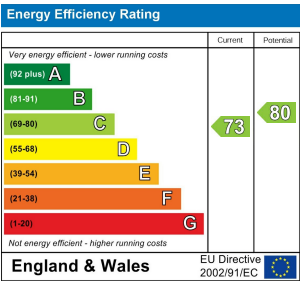


## Nearest Stations

- Totteridge & Whetstone 0.5miles
- Woodside Park 0.6miles
- Oakleigh Park Overground 1.0miles

## Property Description

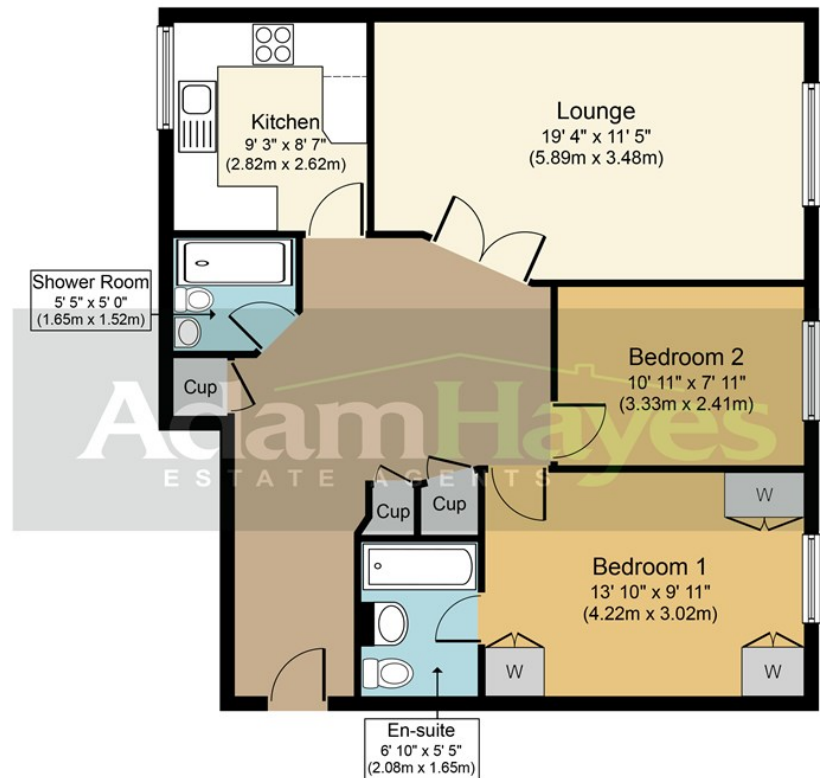
Set back off Whetstone High Road and conveniently located within ½ mile of Totteridge & Whetstone tube station and is this well presented two bedroom, two bathroom (one en-suite) second floor apartment in this popular lift serviced block. The property benefits from an approx. 19 ft reception room, a modern fitted kitchen, a family shower room, double glazing windows and gas central heating. Further benefits include a use of communal gardens, being offered on chain free basis, off street parking and a garage.



Adam Hayes - North Finchley Office - Sales 365 Ballards Lane, North Finchley, London, N12 8LL

Tel: 020 8445 4008 Email: info@adam-hayes.co.uk Web: www.adam-hayes.co.uk





**Approximate Floor Area**  
**803 sq. ft.**  
**(74.6 sq. m.)**

Whilst every attempt has been made to ensure the accuracy of the floor plan contained here, measurements of doors, windows, rooms and any other items are approximate and no responsibility is taken for any error, omission, or mis-statement. This plan is for illustrative purposes only and should be used as such by any prospective purchaser or tenant. The services, systems and appliances shown have not been tested and no guarantee as to their operability or efficiency can be given.  
 Copyright V360 Ltd 2017 | [www.houseviz.com](http://www.houseviz.com)

These particulars, whilst believed to be accurate, are set out as a general outline only for guidance and do not constitute any part of an offer or contract. Intending purchasers or prospective tenants should not rely on them as statements or representation of fact, but must satisfy themselves by inspection or otherwise as to their accuracy. We have not carried out a detailed survey, not tested the services, appliances and specific fittings. Room sizes should not be relied upon for carpets and furnishings. The measurements given are approximate. No person in this firm's employment has the authority to make or give any representation or warranty in respect of the property.