





Adam Hayes - North Finchley Office - Sales 365 Ballards Lane, North Finchley, London, N12 8LL  
 Tel: 020 8445 4008 Email: [info@adam-hayes.co.uk](mailto:info@adam-hayes.co.uk) Web: [www.adam-hayes.co.uk](http://www.adam-hayes.co.uk)

Gainsborough Road, London, N12

OIEO £350,000

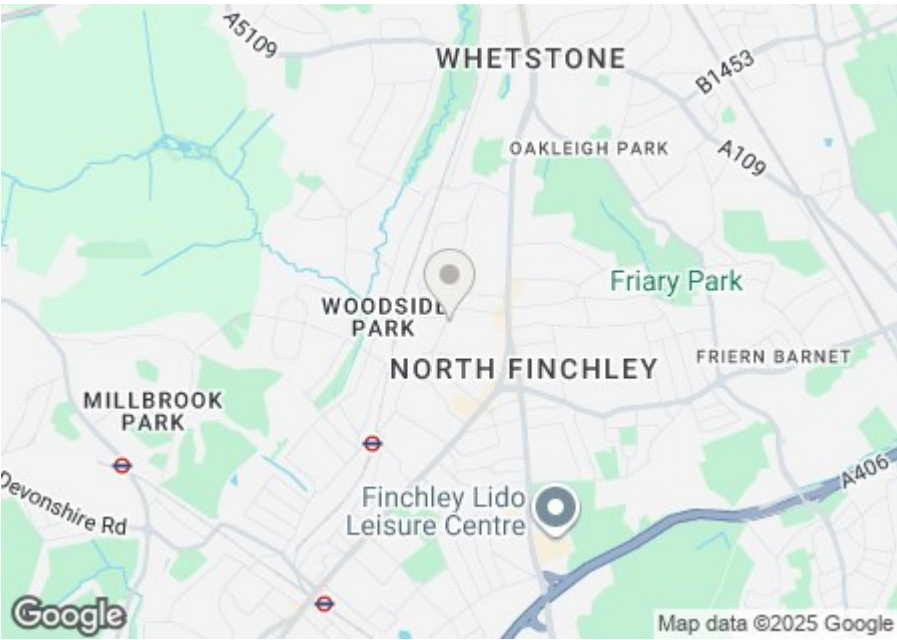
1 Bedrooms 1 Bathrooms 1 Receptions

Key Features

- One Bedroom Maisonette
- First Floor
- Modern Kitchen
- 14ft Reception
- Paved Rear Private Garden
- Share of Freehold

Other Information

Tenure: Share of Freehold  
Length of Lease: 900+ years  
Council Tax Band: C

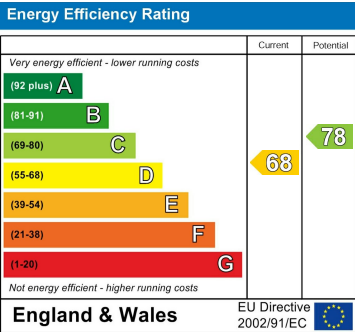


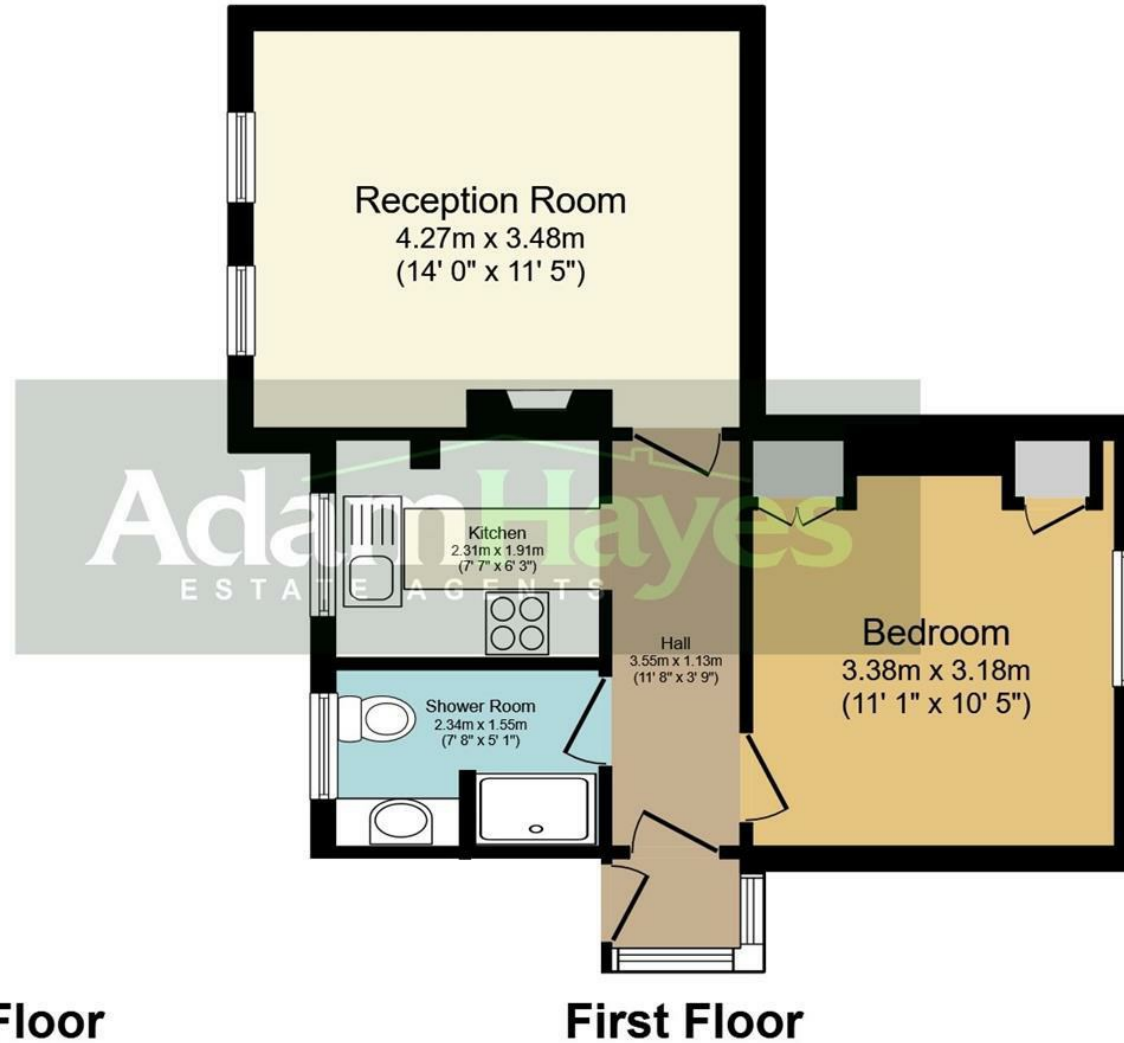
Nearest Stations

- Woodside Park Station 0.2miles
- West Finchley Station 0.5miles
- Totteridge & Whetstone Station 1.0mile

Property Description

A beautiful one bedroom first floor maisonette situated in this excellent location in the heart of North Finchley within easy access of Woodside Park Tube Station (Northern Line) and multiple shops and amenities. The property benefits from an approximately 14ft reception room, a modern fitted kitchen, original sash windows and a paved rear private garden. To really appreciate the location and condition an internal viewing is highly recommended.





Total floor area 42.6 sq.m. (458 sq.ft.) approx

This plan is for illustration purposes only and may not be representative of the property. Plan not to scale.

These particulars, whilst believed to be accurate, are set out as a general outline only for guidance and do not constitute any part of an offer or contract. Intending purchasers or prospective tenants should not rely on them as statements or representation of fact, but must satisfy themselves by inspection or otherwise as to their accuracy. We have not carried out a detailed survey, not tested the services, appliances and specific fittings. Room sizes should not be relied upon for carpets and furnishings. The measurements given are approximate. No person in this firm's employment has the authority to make or give any representation or warranty in respect of the property.