






Adam Hayes - East Finchley Office - Lettings 158 High Road, East Finchley, London, N2 9AS

Tel: 0208 883 2621 Email: info@adam-hayes.co.uk Web: www.adam-hayes.co.uk

Park Farm Close, London, N2 0PU

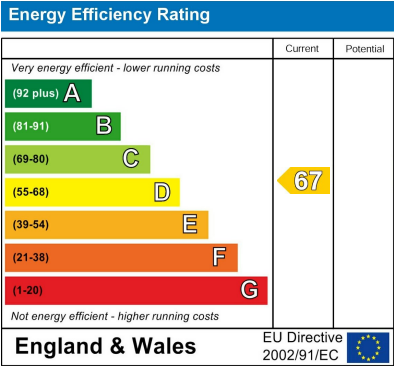
£1,800 PCM

 2 Bedrooms  1 Bathrooms  1 Receptions

Key Features

Other Information

Council Tax Band:
Length of Tenancy: Long Let
Deposit: £2,075

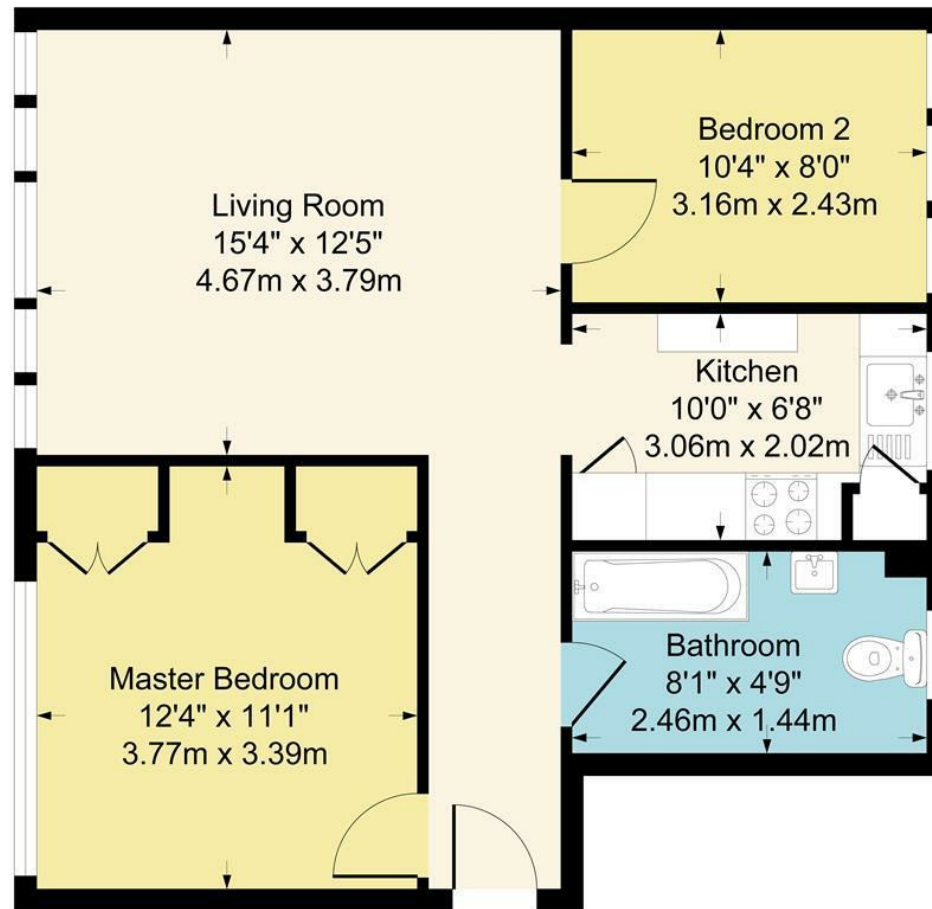


Nearest Stations

-
-
-

Property Description

Approximate Gross Internal Area
581 sq ft - 54 sq m



Ground Floor

Although every attempt has been made to ensure accuracy, all measurements are approximate.
This floorplan is for illustrative purposes only and not to scale.
Measured in accordance with RICS Standards.

These particulars, whilst believed to be accurate, are set out as a general outline only for guidance and do not constitute any part of an offer or contract. Intending purchasers or prospective tenants should not rely on them as statements or representation of fact, but must satisfy themselves by inspection or otherwise as to their accuracy. We have not carried out a detailed survey, not tested the services, appliances and specific fittings. Room sizes should not be relied upon for carpets and furnishings. The measurements given are approximate. No person in this firm's employment has the authority to make or give any representation or warranty in respect of the property.