





Adam Hayes - East Finchley Office - Lettings 158 High Road, East Finchley, London, N2 9AS

Tel: 0208 883 2621 Email: [info@adam-hayes.co.uk](mailto:info@adam-hayes.co.uk) Web: [www.adam-hayes.co.uk](http://www.adam-hayes.co.uk)

# Fortune Green Road, West Hampstead, NW6

## £2,000 PCM

 1 Bedrooms  1 Bathrooms  1 Receptions

### Key Features

- Modern One Bedroom Flat
- Close to West Hampstead Station
- Wooden Flooring
- 14ft Lounge
- Modern Open Plan Kitchen
- Modern Shower Room

### Nearest Stations

- Hampstead
- West Hampstead
- Golders Green


### Property Description

A well-presented one-bedroom conversion, ideally located in this sought-after position within easy reach of local shops and amenities. The property features a bright reception room of approximately 14ft with a modern open-plan kitchen, a contemporary fully tiled shower room, wooden flooring, double glazed windows, and an entry phone system. West Hampstead Station is close by, offering excellent transport links via the Jubilee Line, Thameslink, and Overground, making this an ideal location for commuters. To fully appreciate the condition and superb location, an internal viewing is highly recommended.

### Other Information

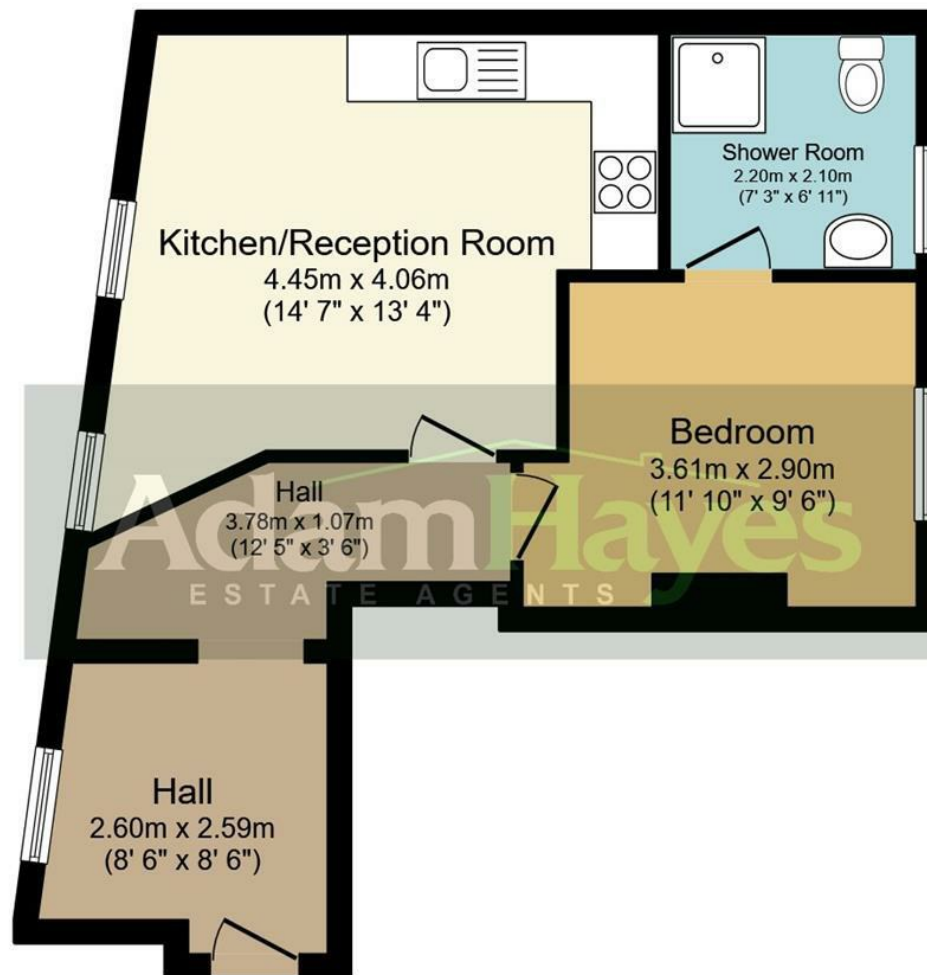
Council Tax Band: C  
Length of Tenancy: Long Let  
Deposit: £2,307



Energy Efficiency Rating		
	Current	Potential
Very energy efficient - lower running costs		
(92 plus) A		
(81-91) B		
(69-80) C		
(55-68) D	68	68
(39-54) E		
(21-38) F		
(1-20) G		
Not energy efficient - higher running costs		
England & Wales	EU Directive 2002/91/EC	

Adam Hayes - East Finchley Office - Lettings 158 High Road, East Finchley, London, N2 9AS

Tel: 0208 883 2621 Email: [info@adam-hayes.co.uk](mailto:info@adam-hayes.co.uk) Web: [www.adam-hayes.co.uk](http://www.adam-hayes.co.uk)



### Third Floor

Total floor area 42.9 sq.m. (462 sq.ft.) approx

This plan is for illustration purposes only and may not be representative of the property. Plan not to scale.

These particulars, whilst believed to be accurate, are set out as a general outline only for guidance and do not constitute any part of an offer or contract. Intending purchasers or prospective tenants should not rely on them as statements or representation of fact, but must satisfy themselves by inspection or otherwise as to their accuracy. We have not carried out a detailed survey, not tested the services, appliances and specific fittings. Room sizes should not be relied upon for carpets and furnishings. The measurements given are approximate. No person in this firm's employment has the authority to make or give any representation or warranty in respect of the property.